

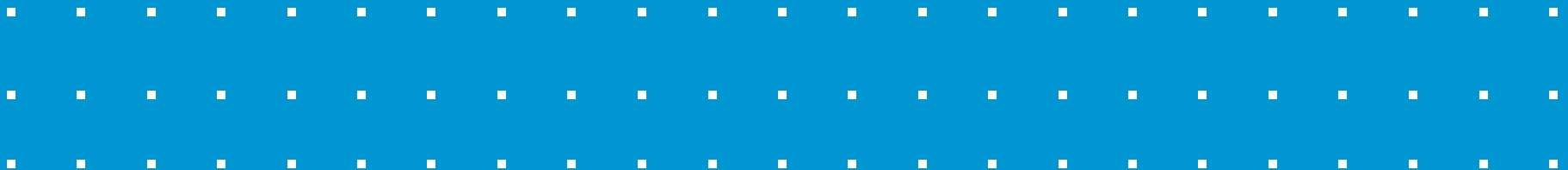


# School Funding and Student Achievement: How Does Texas Compare?

Matthew M. Chingos

Texas Commission on Public School Finance

February 8, 2018

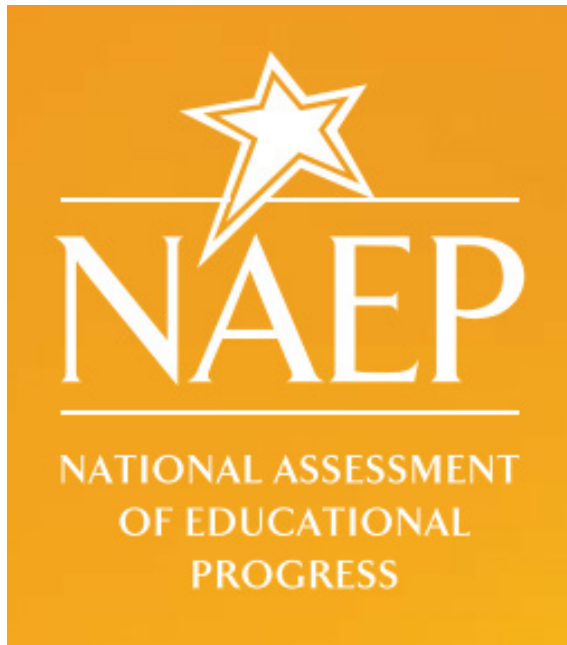


# School Funding and Student Achievement: How Does Texas Compare?

Academic Performance  
Funding Levels  
Funding Progressivity  
Funding Considerations

# Academic Performance

# How does Texas stack up against other states on academic performance?



## Scores Adjusted For:

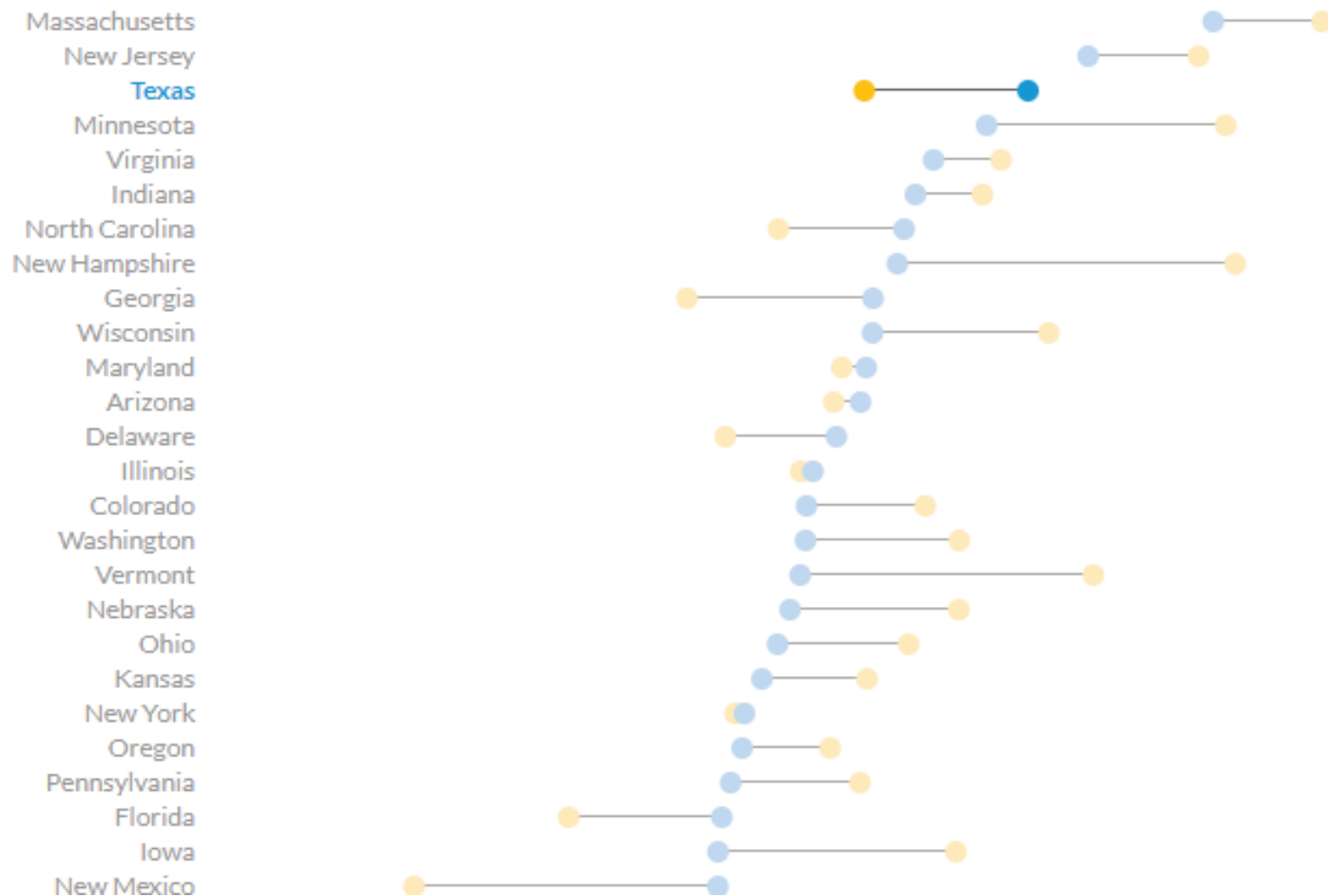
- Age
- Race/ethnicity
- Frequency of English spoken at home
- Special education status
- Free- and reduced-price lunch eligibility
- English language learner status

## Unadjusted v. adjusted scores

● Unadjusted

● Adjusted

2015 8th grade math with controls for age, race/ethnicity, frequency of English spoken at home, special education status, free or reduced-price lunch eligibility, and English language learner status

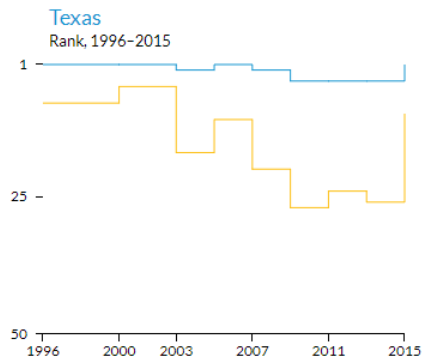


# How does Texas stack up against other states on academic performance?

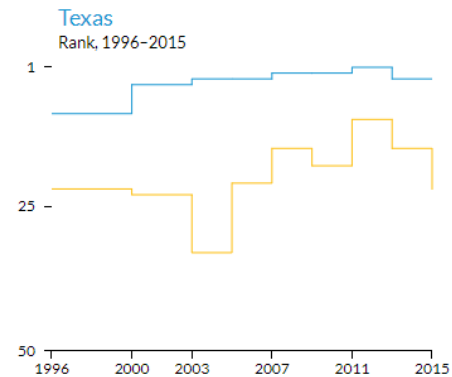
| Subject and Grade             | State Rank       | Adj. State Rank  |
|-------------------------------|------------------|------------------|
| 4 <sup>th</sup> Grade Math    | 10 <sup>th</sup> | 1 <sup>st</sup>  |
| 4 <sup>th</sup> Grade Reading | 39 <sup>th</sup> | 11 <sup>th</sup> |
| 8 <sup>th</sup> Grade Math    | 21 <sup>st</sup> | 3 <sup>rd</sup>  |
| 8 <sup>th</sup> Grade Reading | 38 <sup>th</sup> | 16 <sup>th</sup> |

# How does Texas stack up against other states on academic performance?

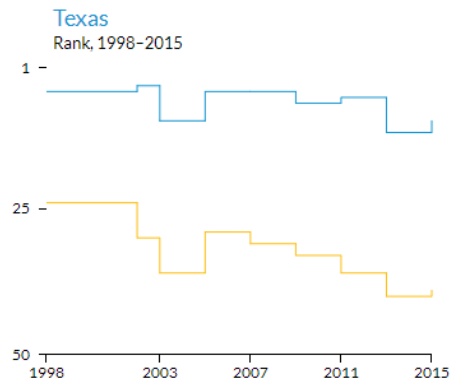
## 4<sup>th</sup> Grade Math



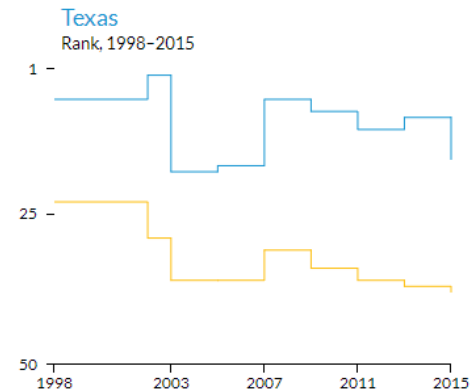
## 8<sup>th</sup> Grade Math



## 4<sup>th</sup> Grade Reading



## 8<sup>th</sup> Grade Reading



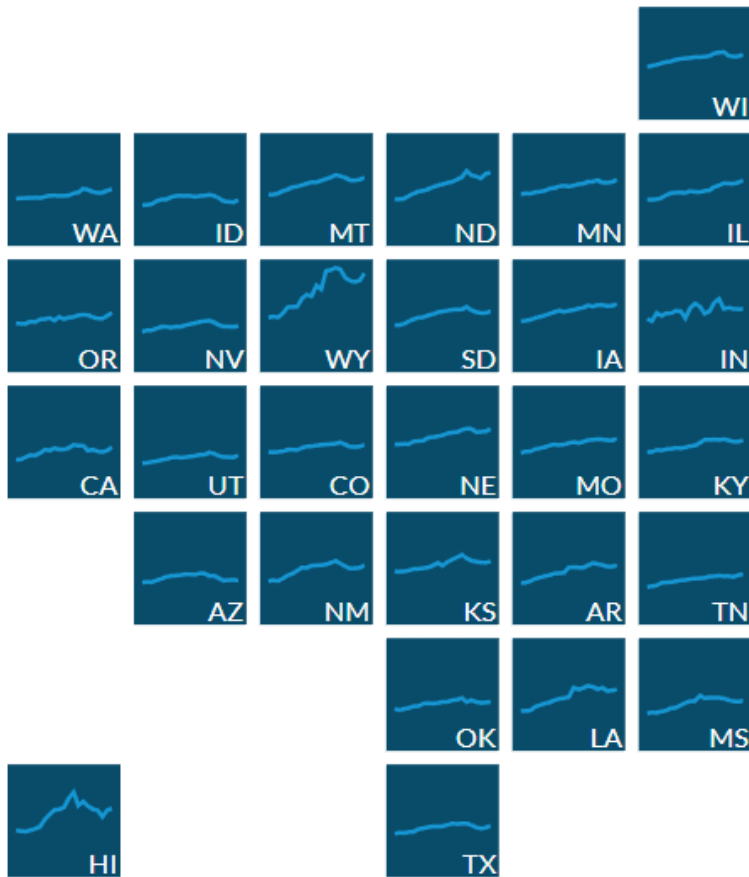
# Funding Levels



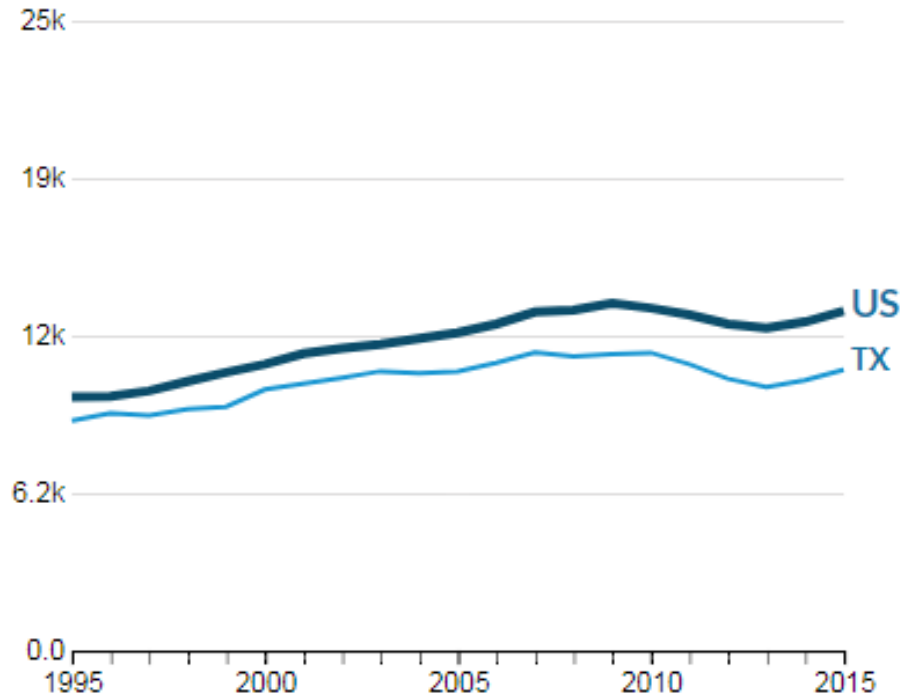
# What does funding in Texas look like?



## Overall Cost-Adjusted Per-Pupil Funding

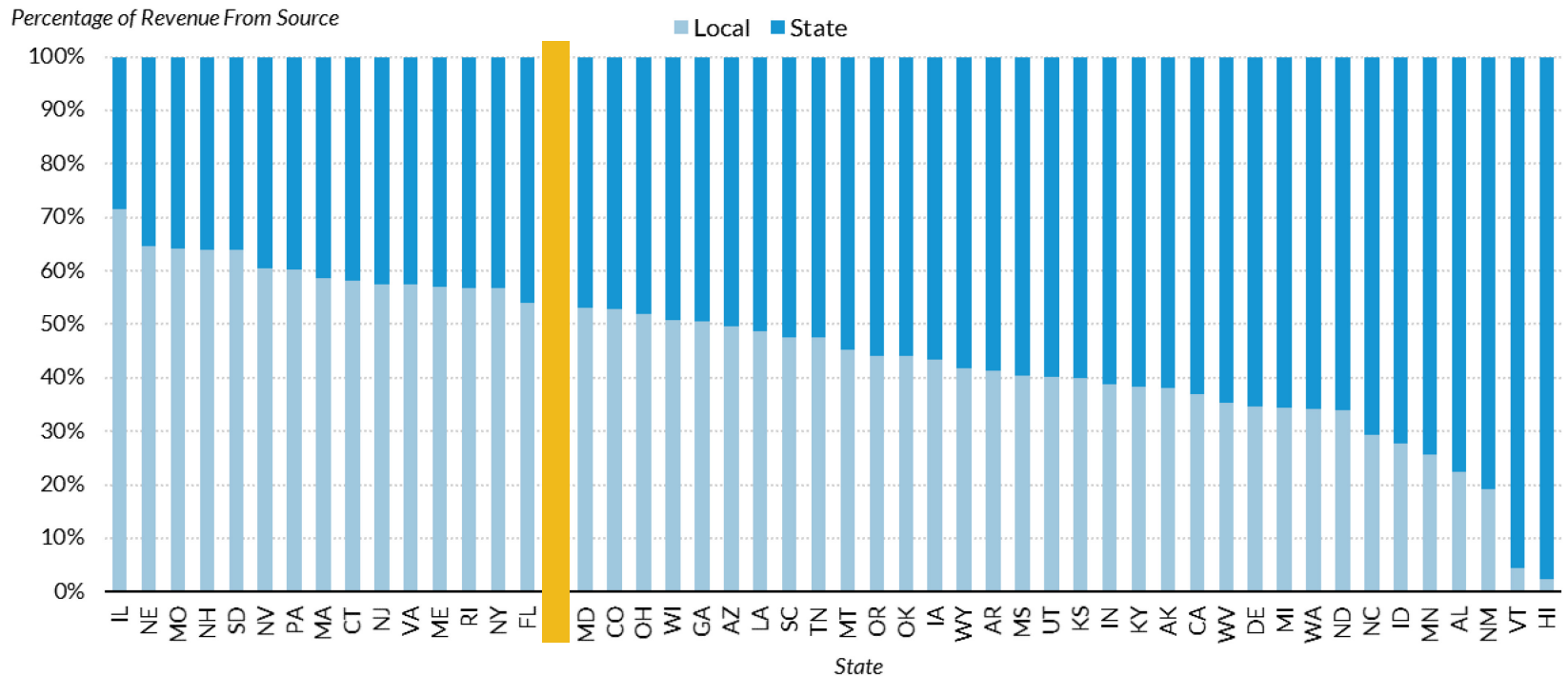


Funding levels per student



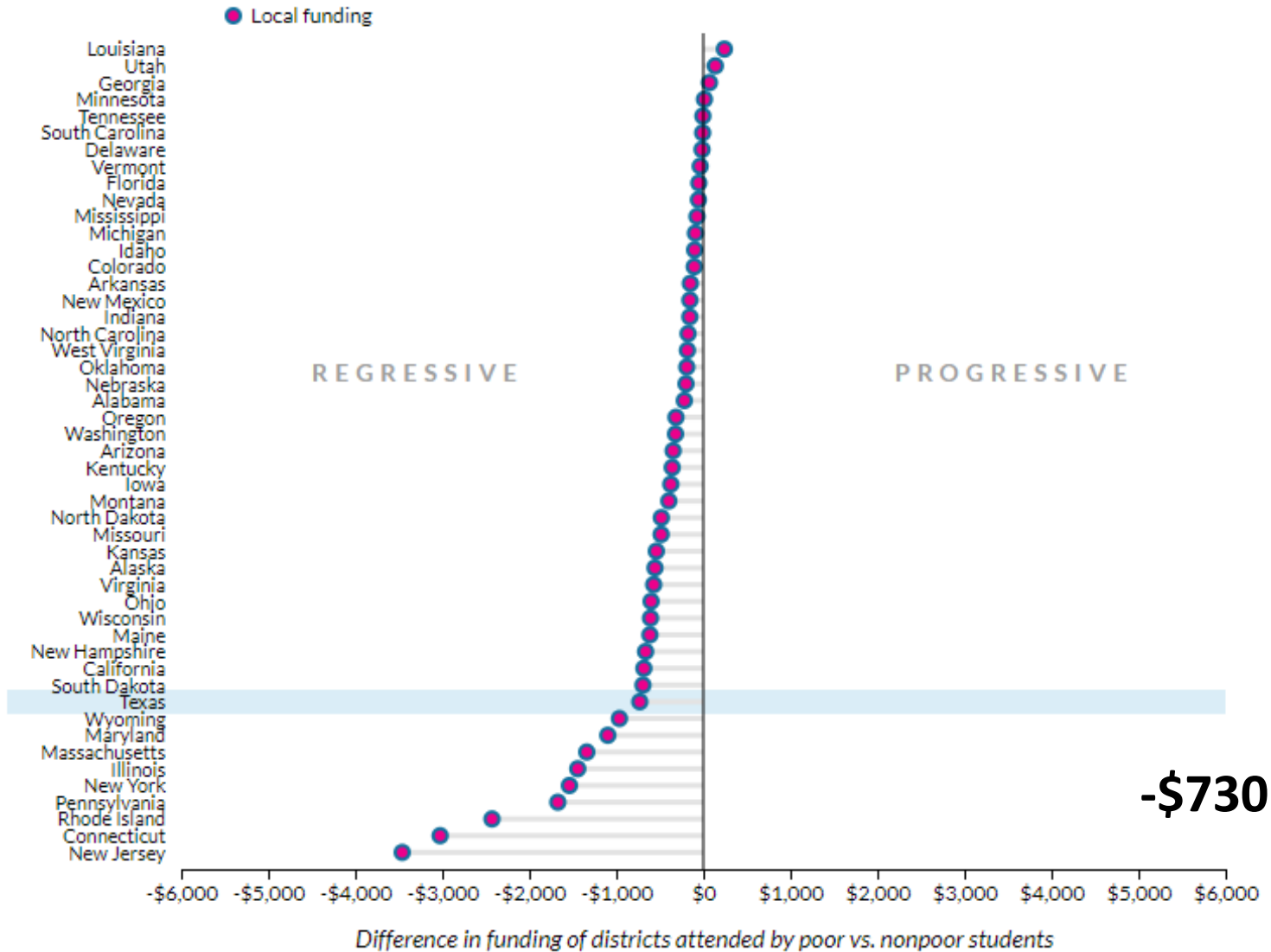
Note: All statistics exclude charter-only districts and other districts not tied to geography.

# Funding is a partnership between revenue raised by districts and states

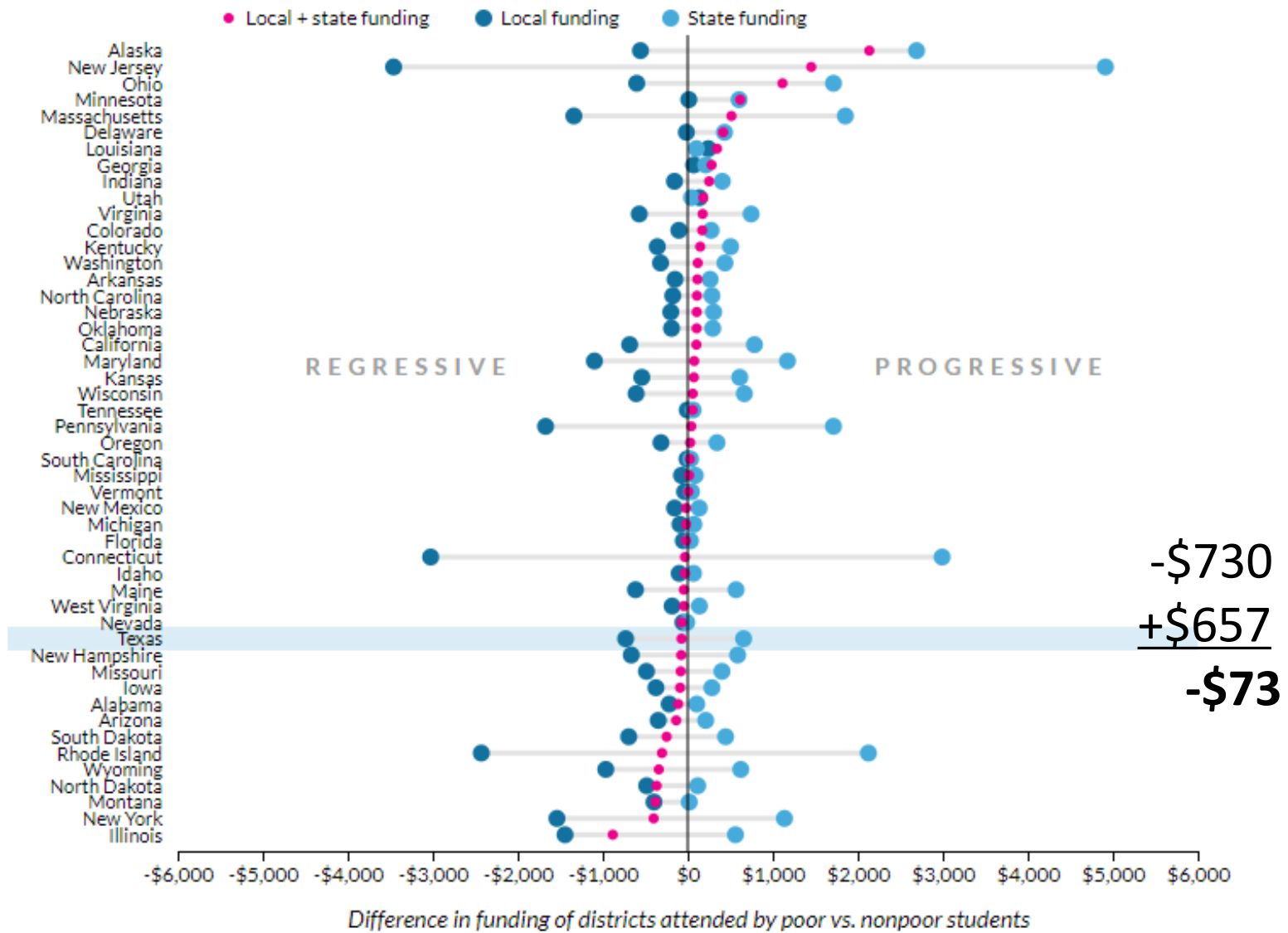


# Funding Progressivity

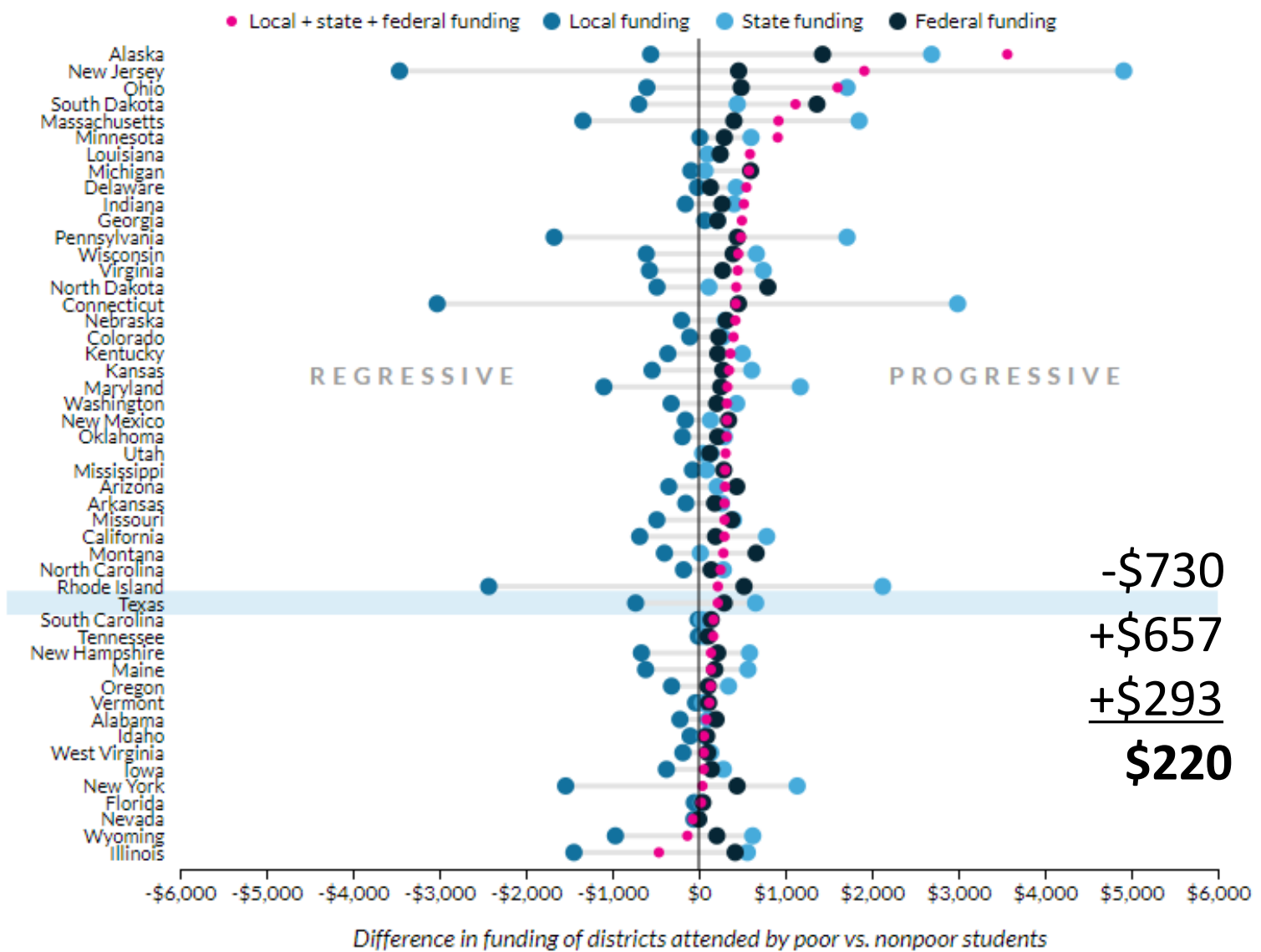
# Local Revenue Progressivity



# State and Local Progressivity

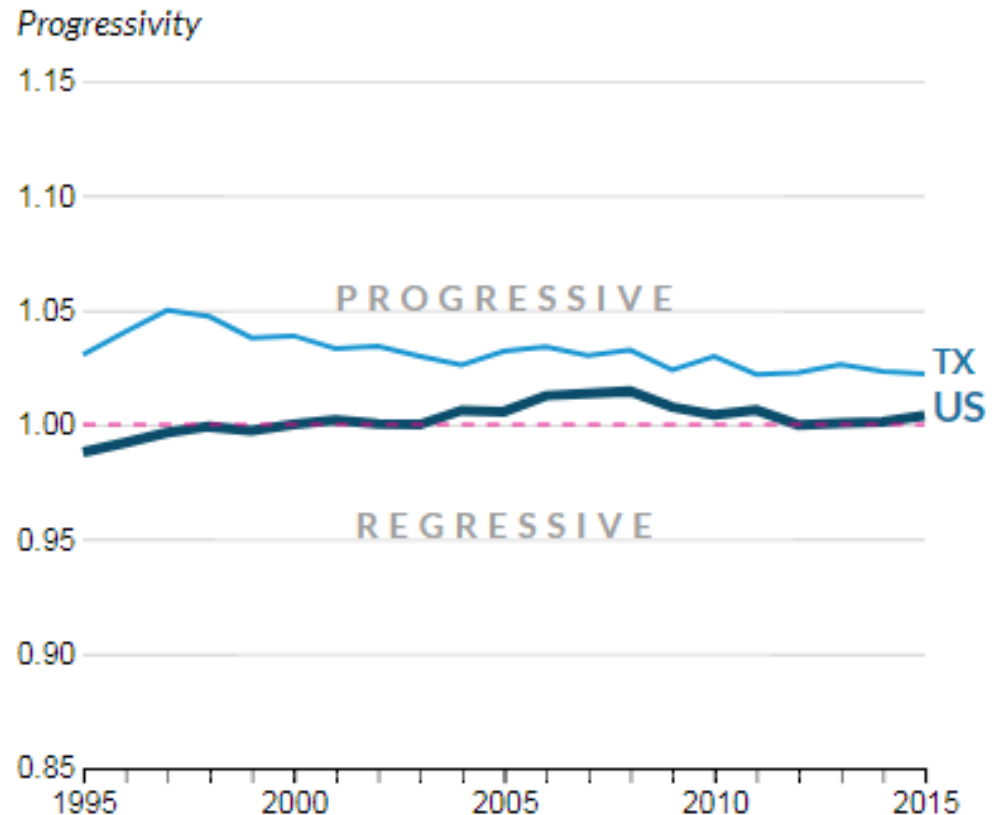
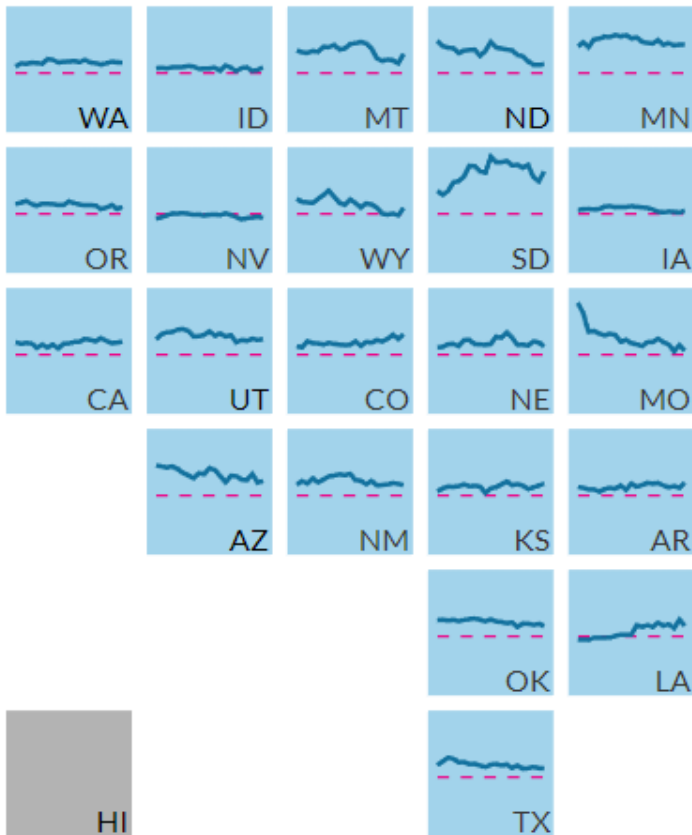


# Total Progressivity



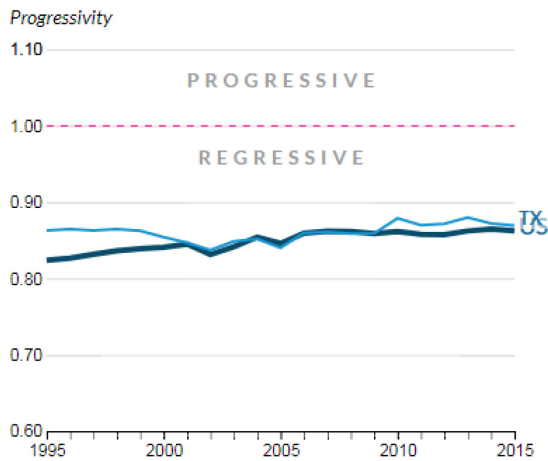
# Progressivity over time

## Overall Cost-Adjusted Progressivity

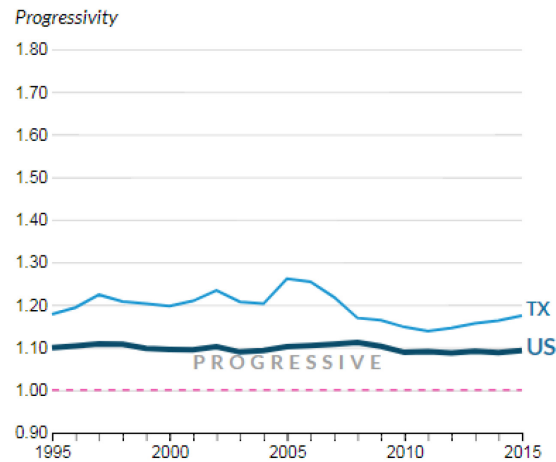


# Progressivity over time

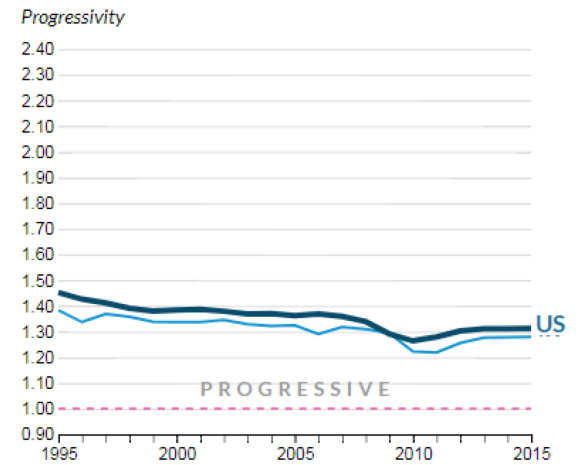
## Local Cost-Adjusted



## State Cost-Adjusted



## Federal Cost-Adjusted





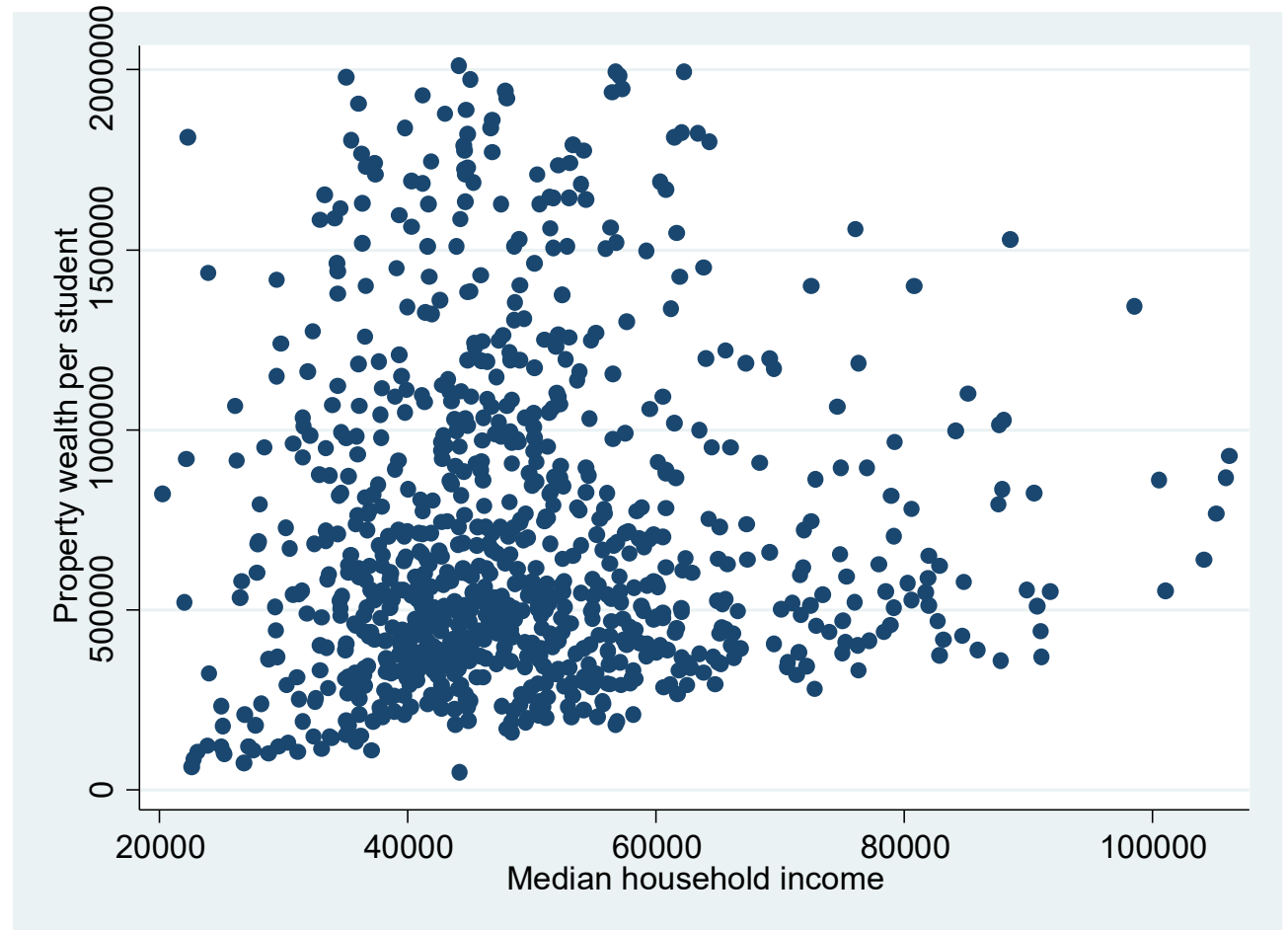
# Funding Considerations

# District property wealth isn't always indicative of student need



# District property wealth isn't always indicative of student need

The correlation between median household income and per-student property wealth in Texas is 0.04.



# Districts may respond to parameters set out in a given funding formula

Use of weighted student counts help to allocate more resources to students who have more need, but also generate incentives to classify more students into the weighted categories

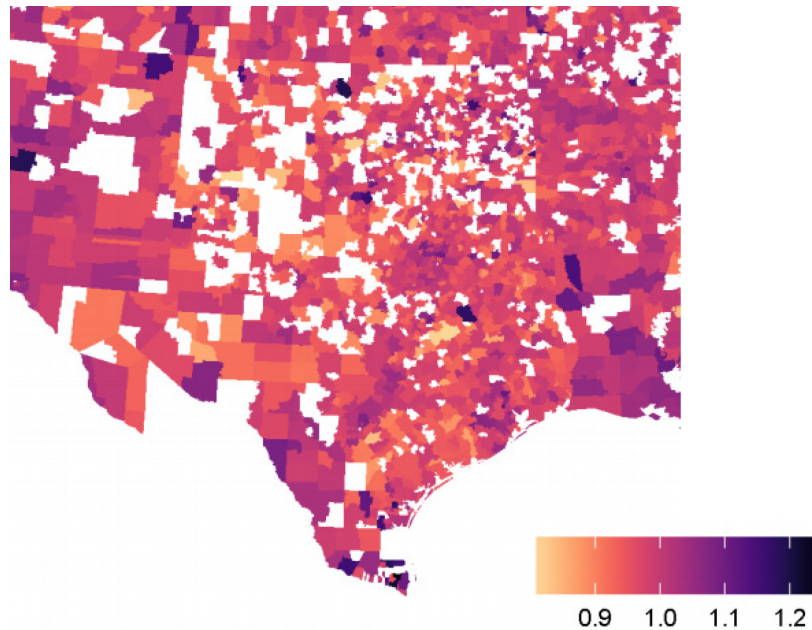
When districts are responsible for providing most or all of the funding for capital expenditures (such as renovations or construction), property-wealthy districts may opt to spend on better facilities

Funding designated for specific purposes may direct dollars to students in need, but limit flexibility for districts

# District-level funding is not school-level funding

State money flows to districts, which may distribute resources to schools in ways that reinforce or run counter to state priorities

Research finds that spending within districts sometimes disproportionately flows to schools with more or fewer low-income students



**Conclusions**

# Conclusions

Relative to other states and to demographically-similar students, Texas produces **above-average results in reading and nation-leading results in math.**

Texas school funding, as a total of local, state, and federal funds, is **slightly progressive**, though contributions from local and state funds alone are **roughly neutral** in terms of directing funds to districts serving low-income students.

**Questions**



# Resources

NAEP data interactive: <http://apps.urban.org/features/naep/>

School funding progressivity data interactive:  
<http://urbn.is/k12funding>

School funding trends data interactive:  
<http://apps.urban.org/features/education-funding-trends/>

State funding policy interactive:  
<https://apps.urban.org/features/funding-formulas/>