

STUDENT NAME _____



State of Texas Assessments of Academic Readiness

Biology

STAAR Alternate 2

Administered April 2023

RELEASED

BIOLOGY



2a



© Steve Byland/stock.adobe.com

2b



© Nicky Rhodes/stock.adobe.com



© Radek Borovka/Shutterstock.com

3a



© Alison Toon/stock.adobe.com



buzzard

© Roman Ivaschenko/stock.adobe.com



seagull

© htrnr/stock.adobe.com

3b



hummingbird

© dhogan172/stock.adobe.com



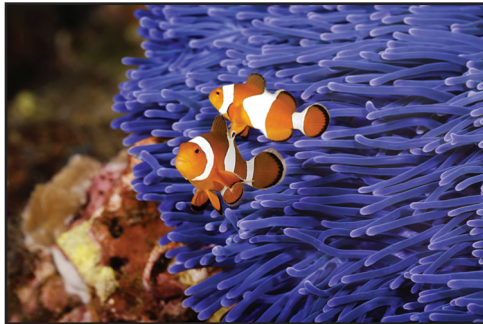
© leungchopan/stock.adobe.com

a panda bear sitting in
front of a bamboo tree



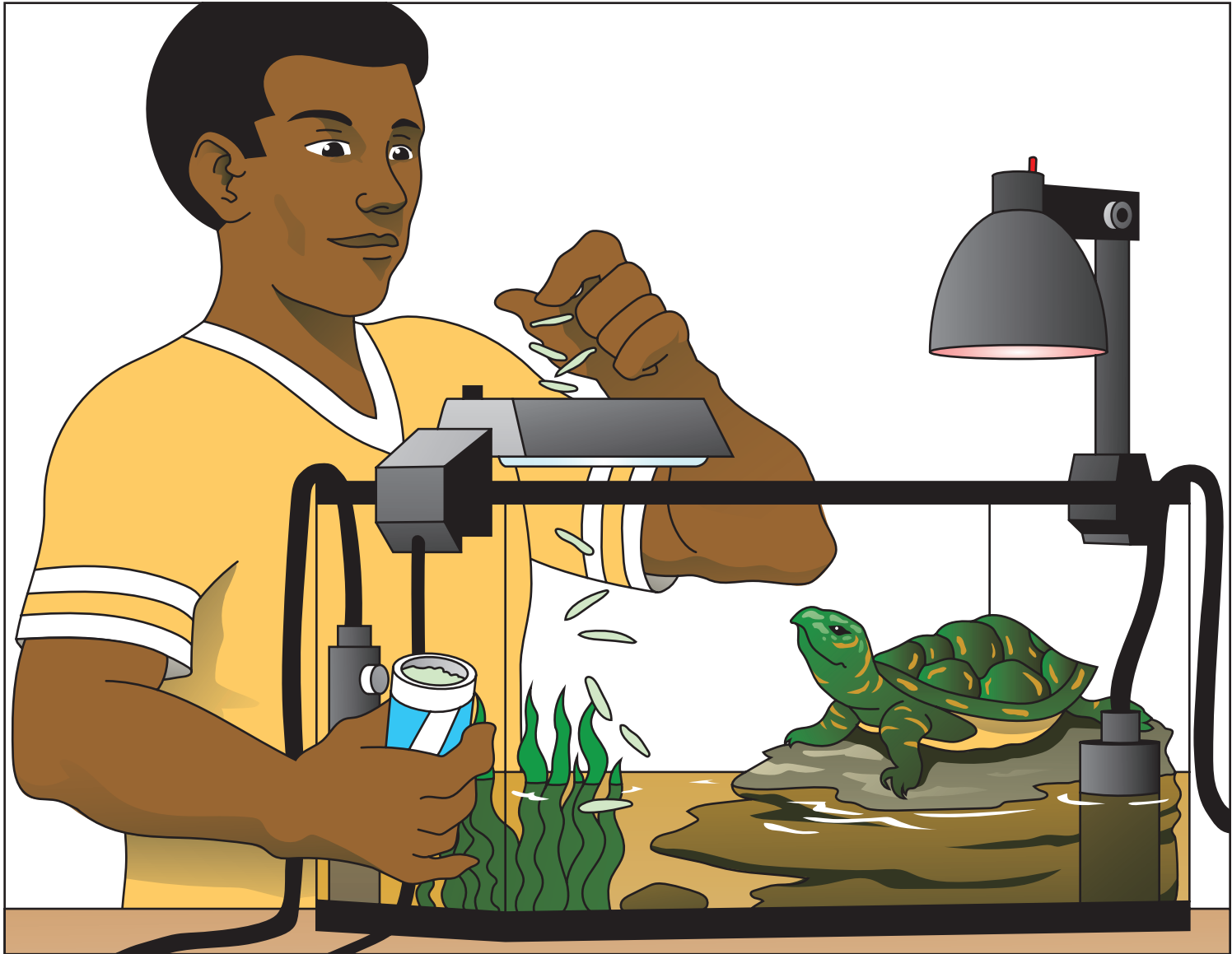
© hakoar/stock.adobe.com

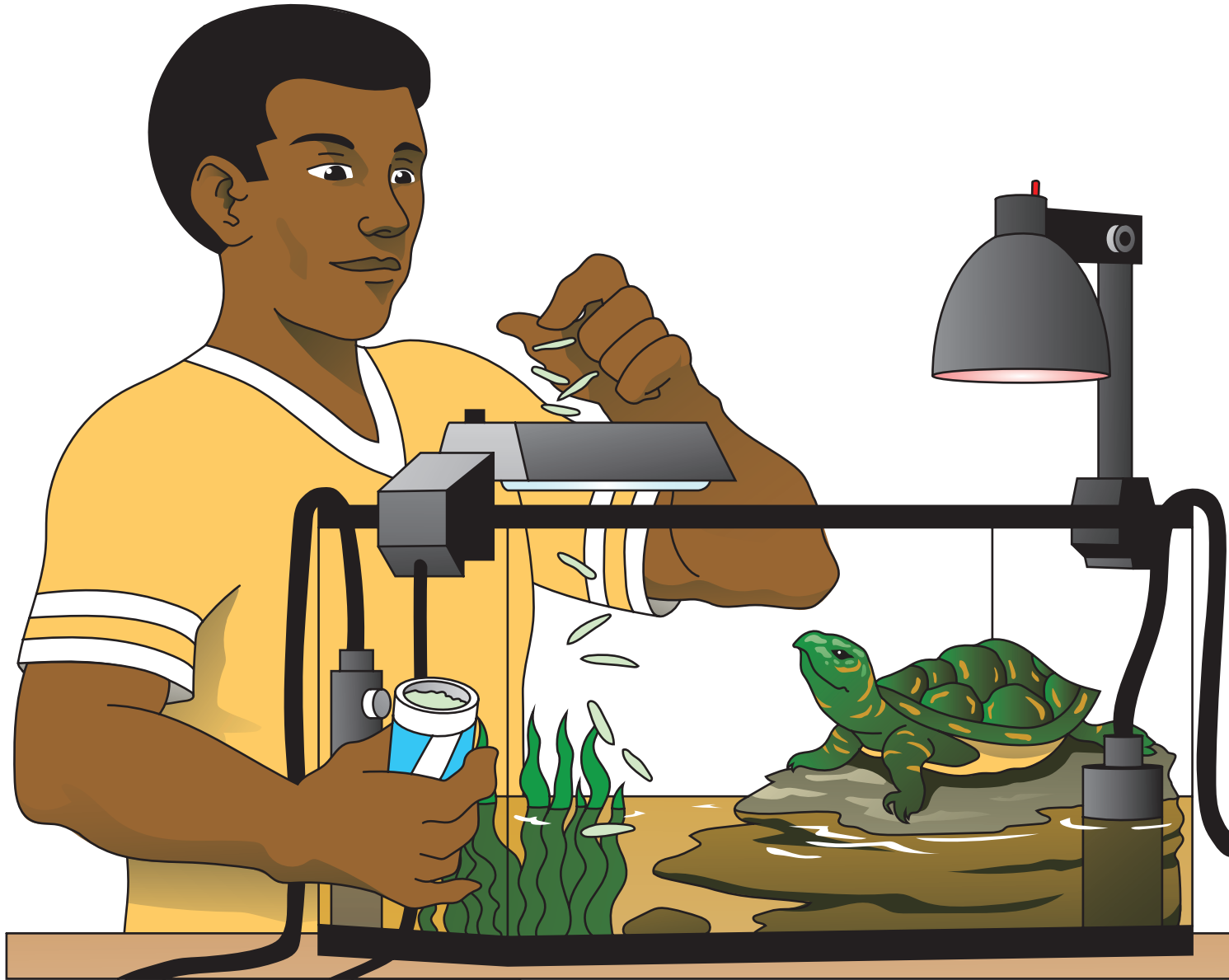
a brown owl perched on
a limb of a tree



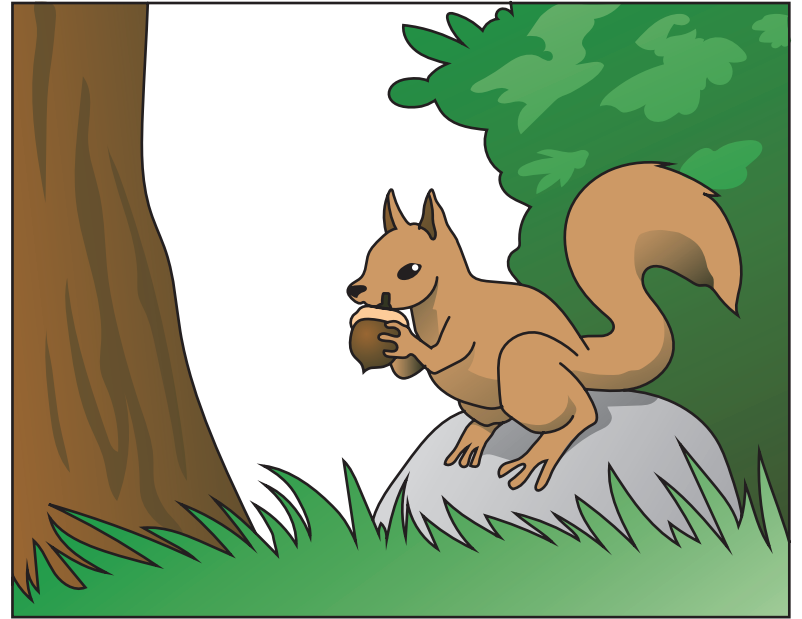
© Aneese/stock.adobe.com

a clown fish swimming
in front of an anemone

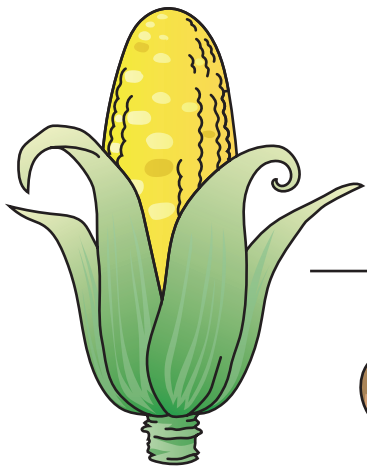




6b



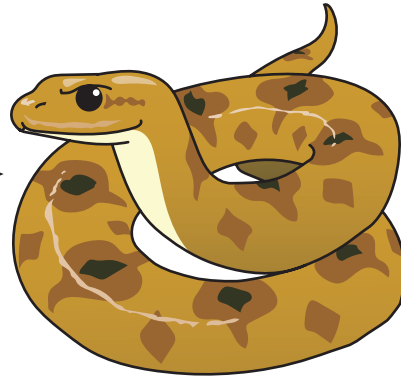
7a



corn



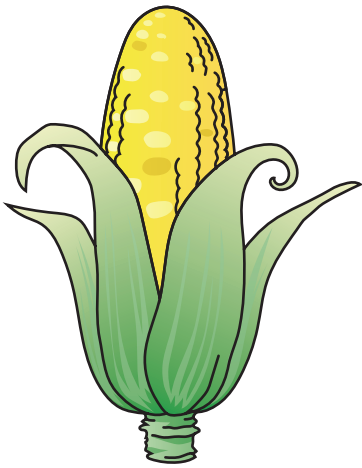
mouse



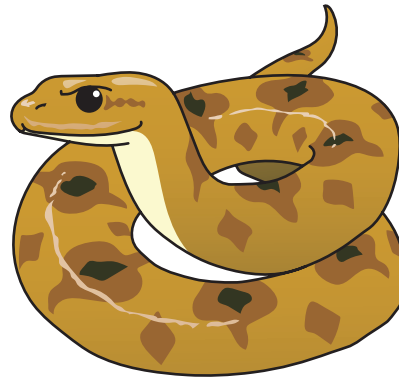
snake



owl



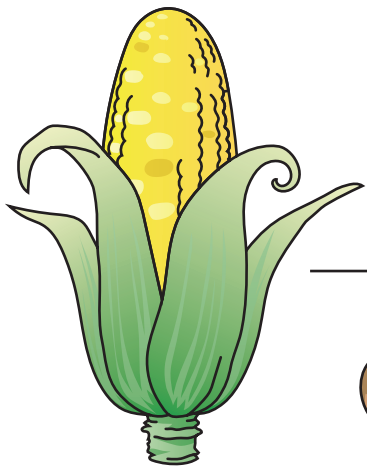
corn



snake



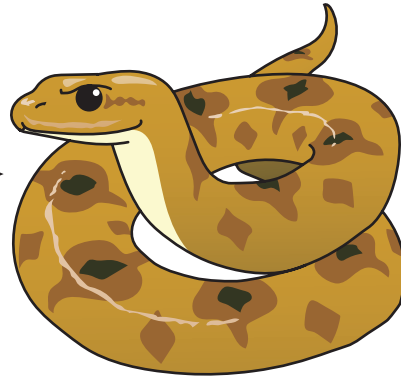
owl



corn



mouse



snake

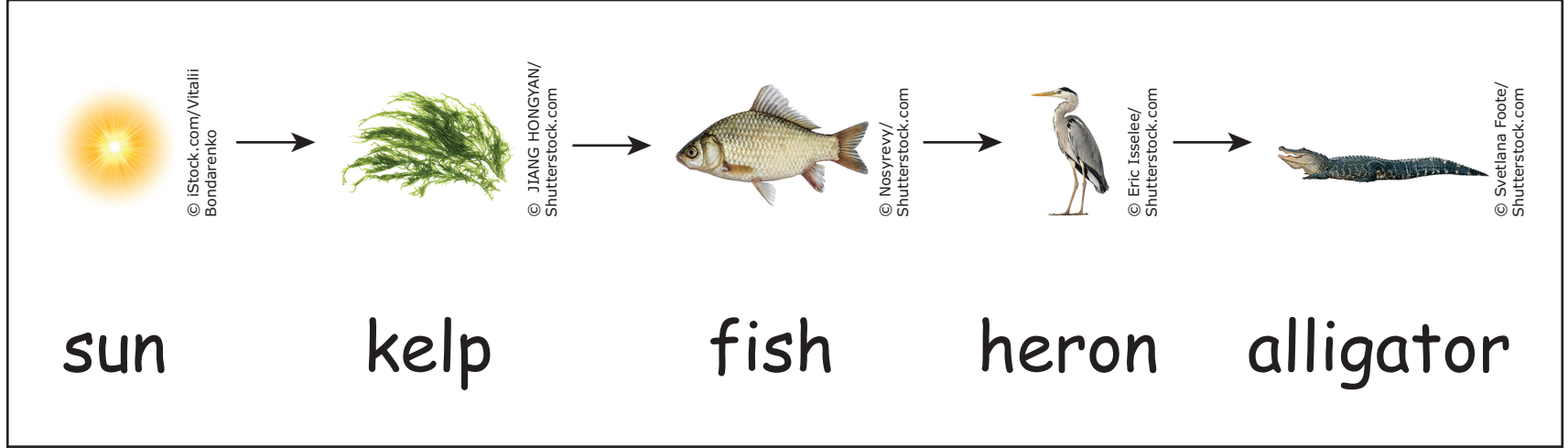


owl

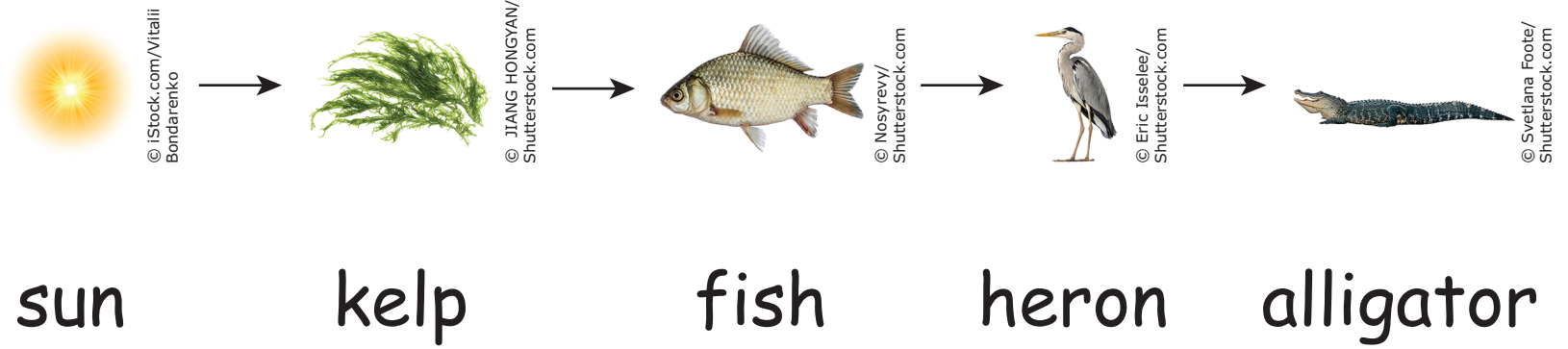
The number of snakes will decrease.

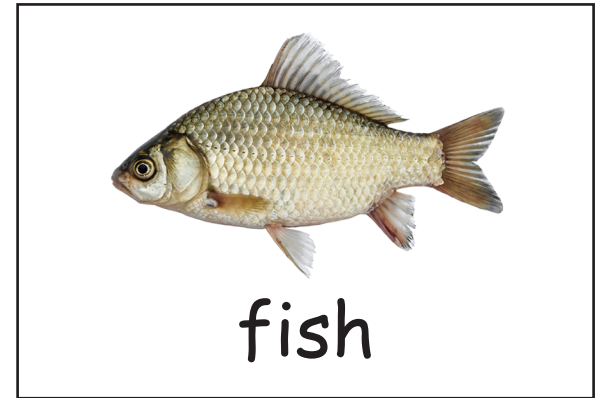
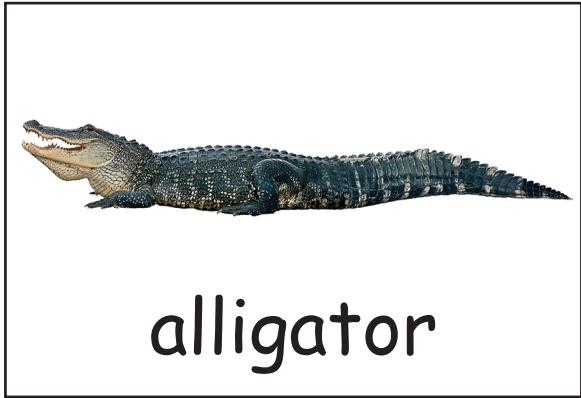
The number of owls will decrease.

The amount of corn will decrease.

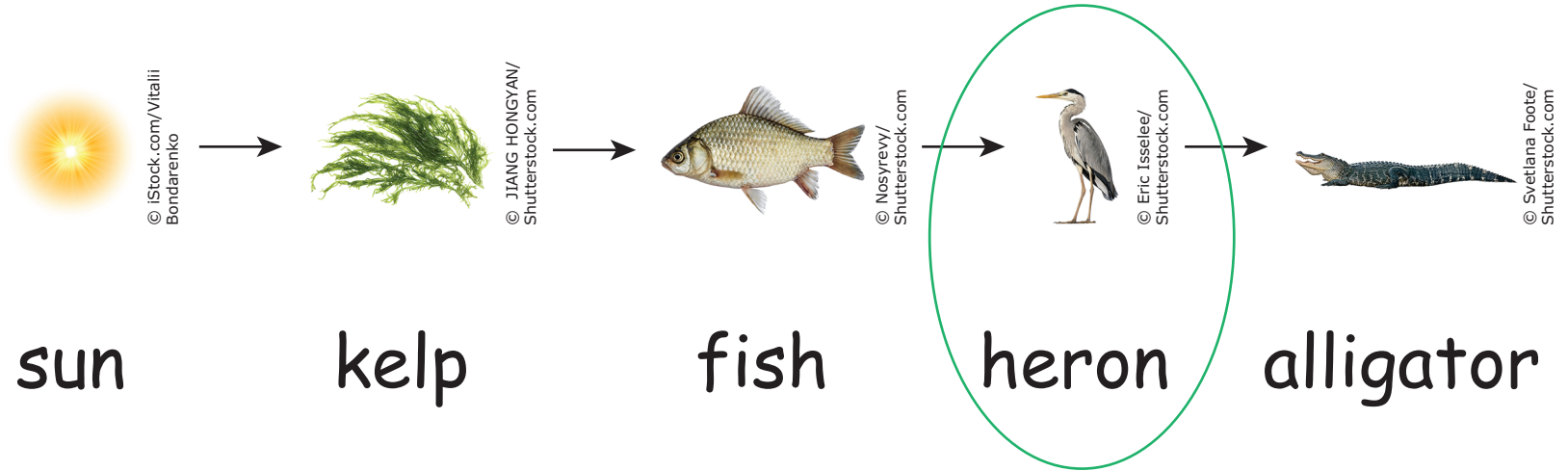


10a





11a

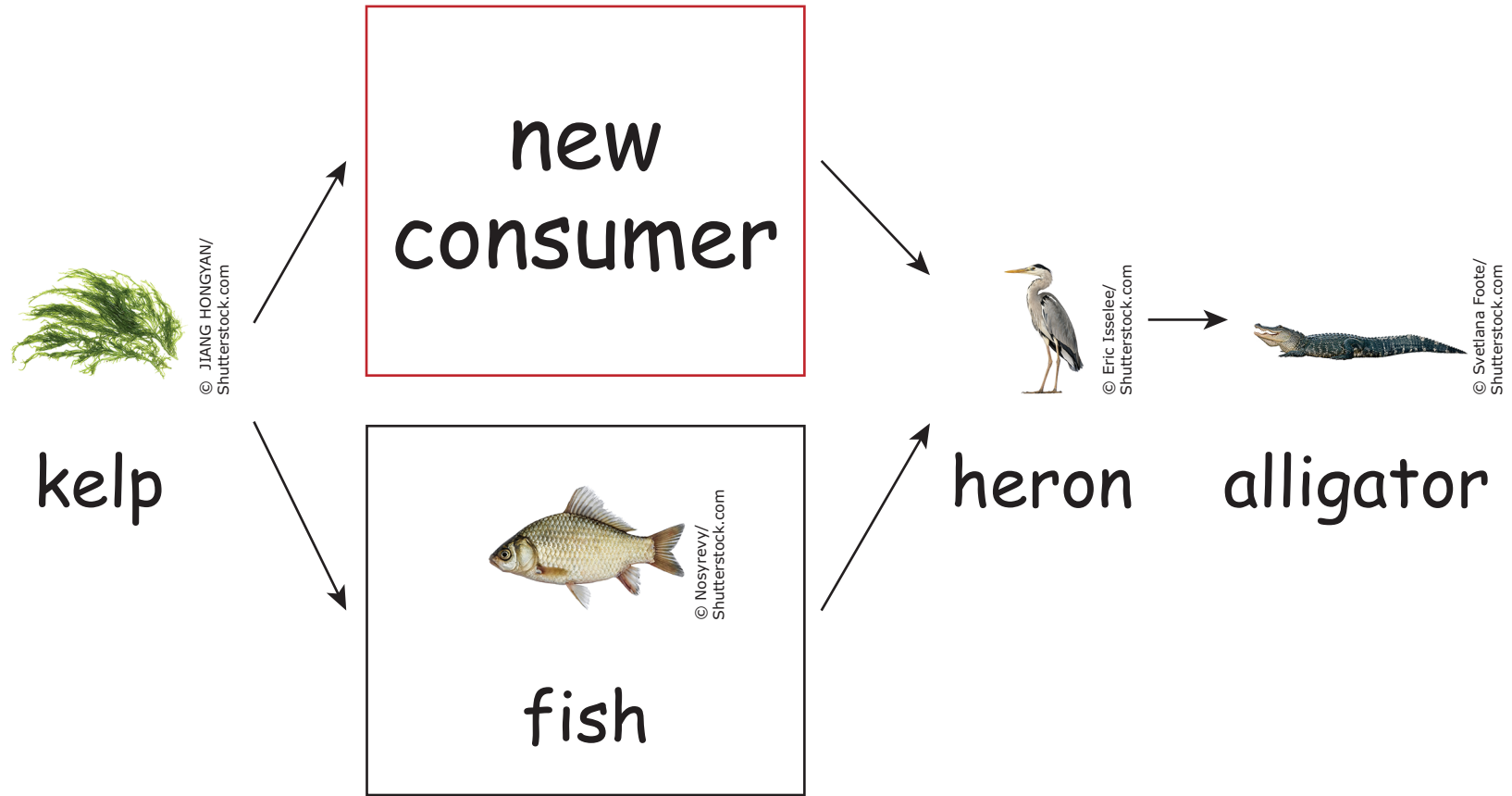


An increase in the heron population would cause —

a decrease in the alligator population

a decrease in the kelp population

a decrease in the fish population



The amount of energy provided by the kelp would increase.

The amount of energy available to the fish would decrease.

The amount of energy available to the kelp would increase.



hooves



14a



hooves



14b



© kamonrat/stock.adobe.com



© magdal3na/stock.adobe.com

15a



© iStock.com/ronaldmorales

thick white fur for camouflage

strong muscles for climbing

horns for defending territory

16a



© iStock.com/ronaldmorales

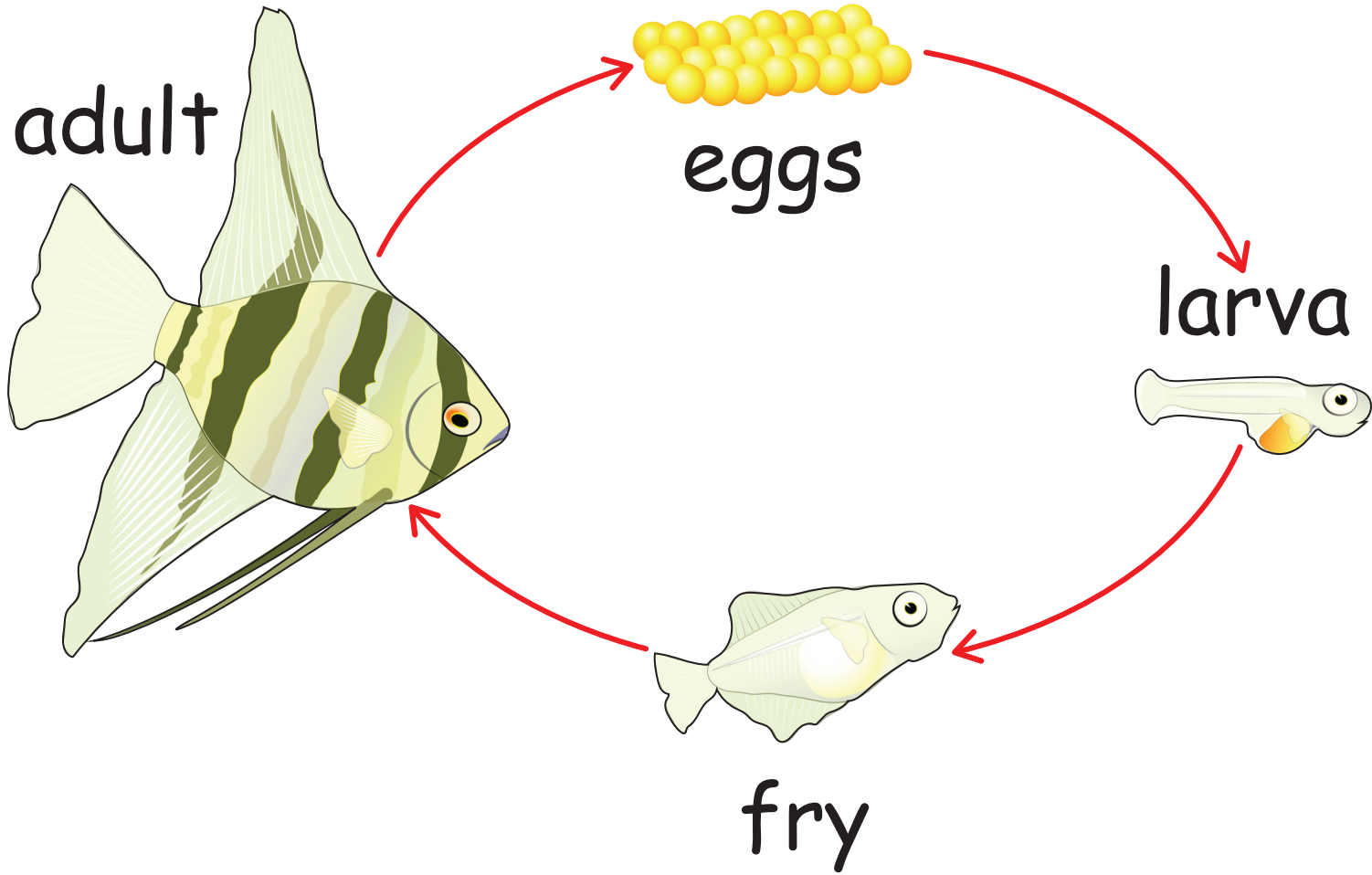
Adaptation	Purpose
strong horns	defending territory
hooves with two toes and toe pads	balancing on and gripping rocks
thick white fur	providing warmth and camouflage

so that animals can eat the food
they prefer

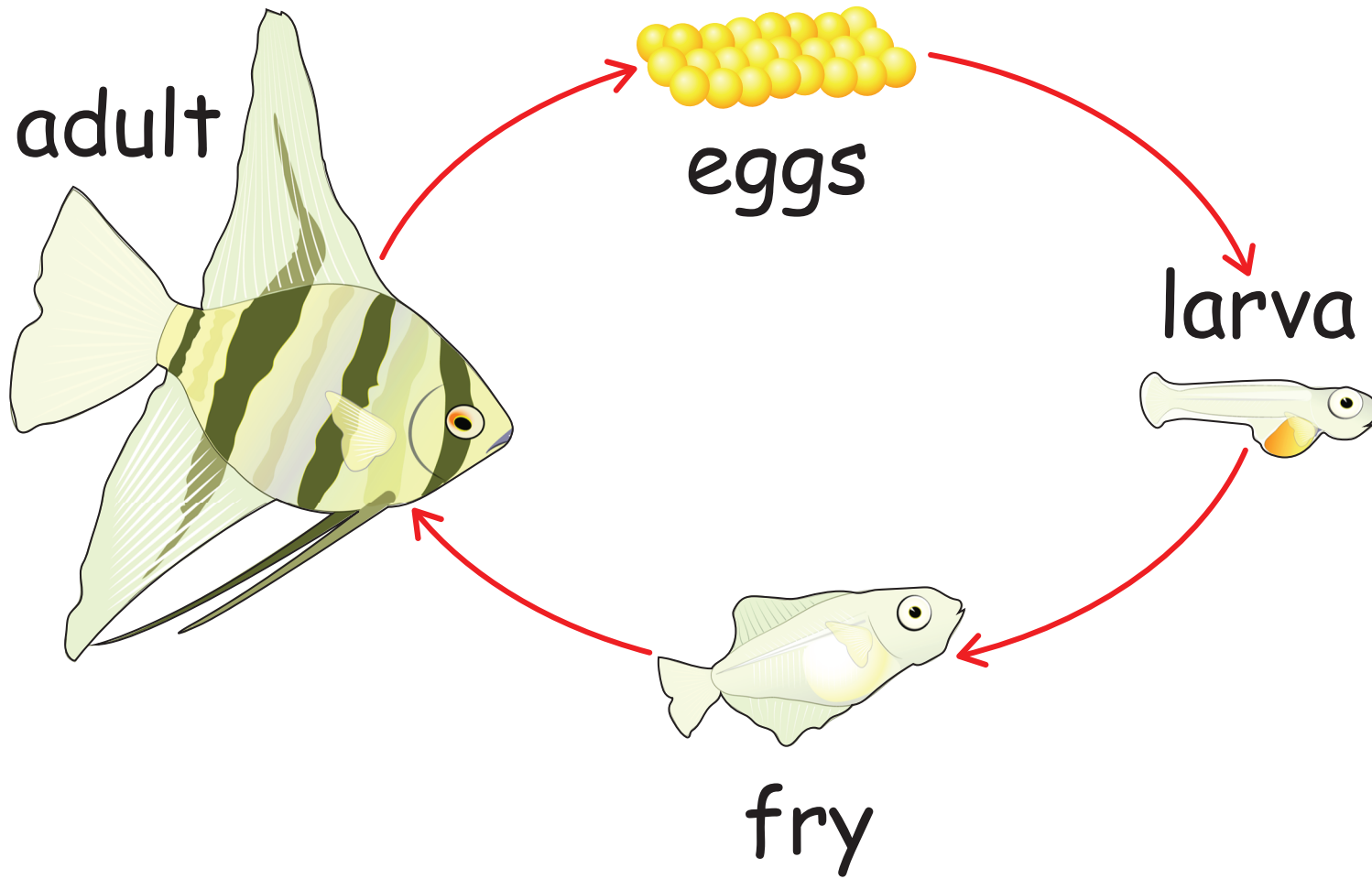
so that animals can meet their basic
needs for survival

to let all animals live in burrows under
the ground

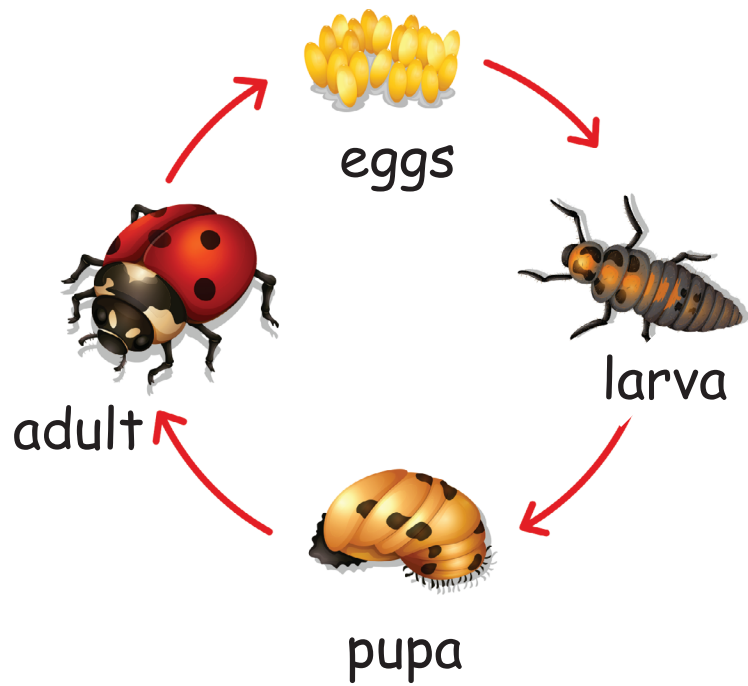
Fish Life Cycle



Fish Life Cycle

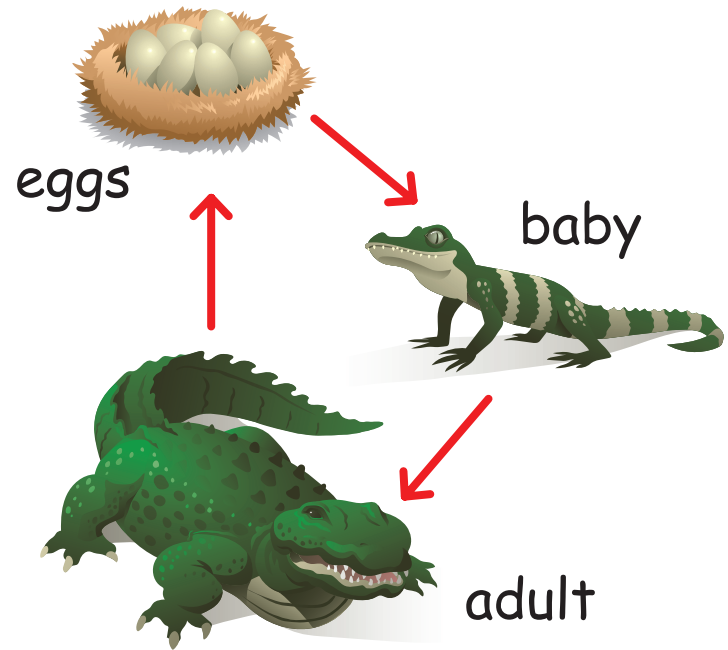


Beetle Life Cycle

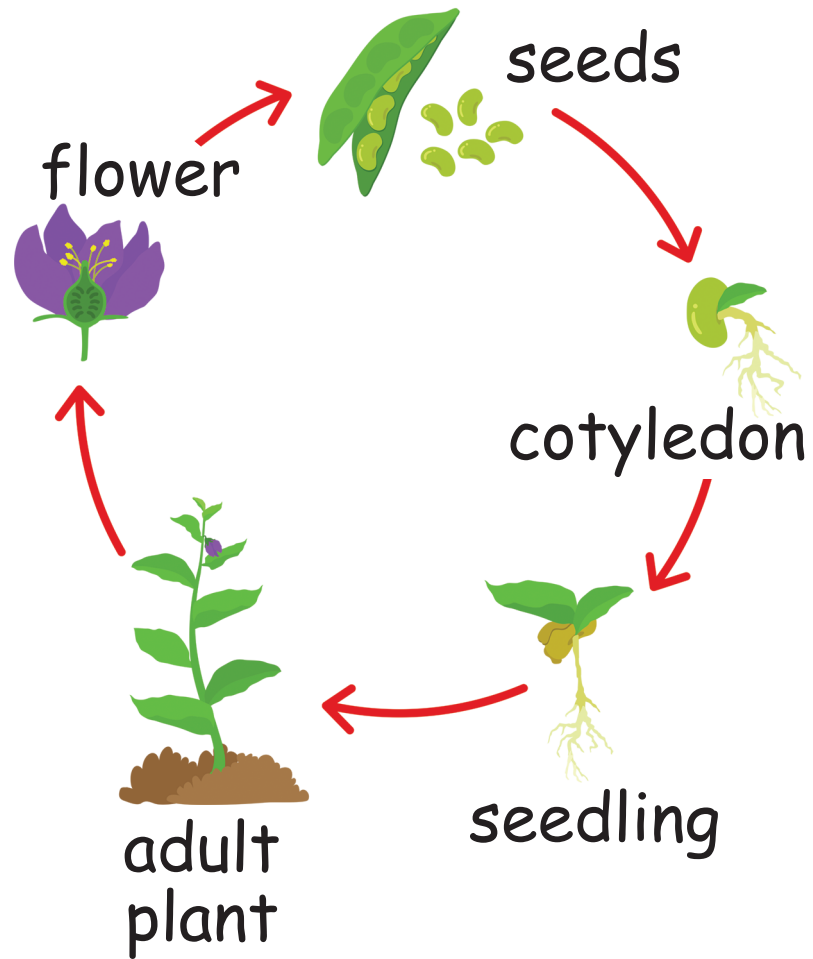


© bluringmedia/stock.adobe.com

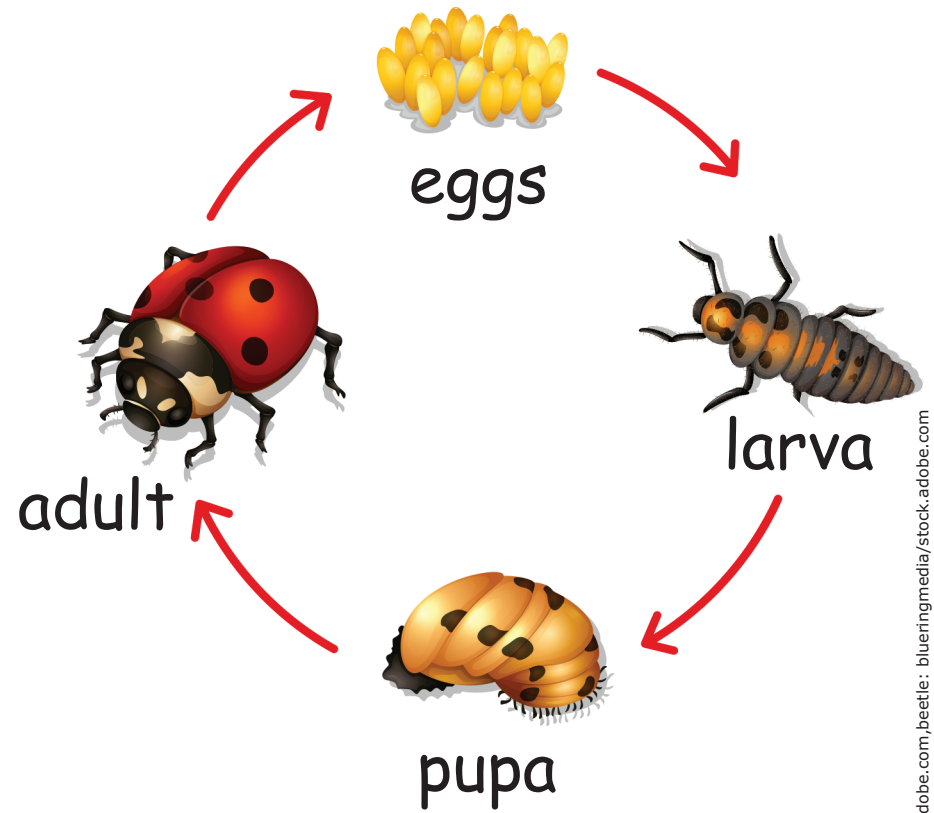
Alligator Life Cycle



Plant Life Cycle



Beetle Life Cycle

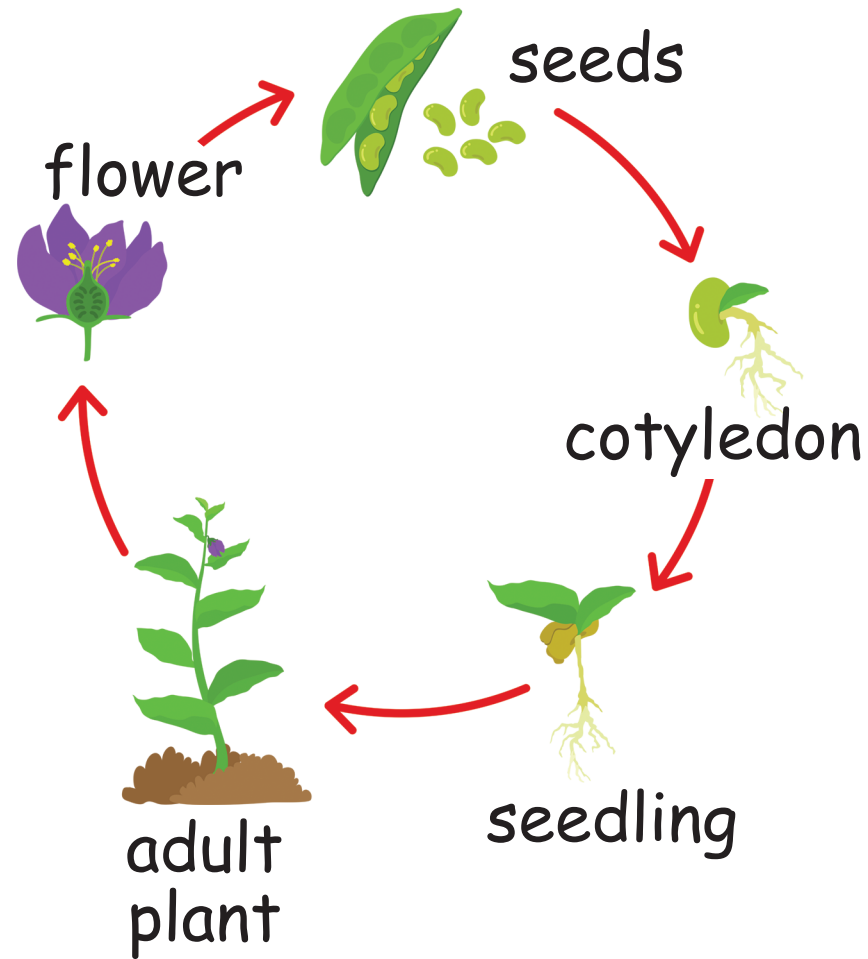


pupa

larva

eggs

Plant Life Cycle



The plant will grow taller.

The cotyledon will split into two.

The adult plant will not grow.



STAAR ALTERNATE 2
Biology
April 2023

1147395

1 2 3 4 5 A B C D E

Printed in the USA

ISD37526