

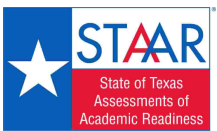
STATE OF TEXAS ASSESSMENTS OF ACADEMIC READINESS
Summary Report
ENGLISH II
All Students

STATEWIDE

Report Date: SUMMER 2021
Date of Testing: SUMMER 2021

Administration Summary			Number of Students Tested	Average Scale Score	Results for Each Reporting Category*																				
					Number	Percent	1		2		3		4		5		6								
Students Tested	Students Not Tested	Understanding/ Analysis Across Genres					Understanding/ Analysis of Literary Texts	Understanding/ Analysis of Informational Texts	Composition	Revision	Editing	Number of Points Possible													
					8							13		13		16		9		9					
Legend					Number of Points Scored																				
--- = No Data Reported For Fewer Than Five Students					#		#		#		#		#		#		#		#		#				
All Students	49262	96			3615	33648	68	15614	32	6624	13	533	1	3.8	48	6.0	47	5.5	42	6.7	42	5.0	56	5.6	62
Male	29291				3578	20815	71	8476	29	3433	12	203	1	3.7	47	5.8	45	5.4	41	6.4	40	5.0	56	5.4	60
Female	19965				3670	12827	64	7138	36	3191	16	330	2	4.0	49	6.4	49	5.6	43	7.3	45	5.1	56	5.8	65
No Information Provided	6		3427	6	100	0	0	0	0	0	0	3.3	42	5.7	44	4.5	35	5.7	35	3.8	43	4.8	54		
Hispanic/Latino	31394		3586	22221	71	9173	29	3559	11	184	1	3.7	46	5.9	45	5.4	41	6.6	41	4.9	54	5.4	61		
American Indian or Alaska Native	138		3614	92	67	46	33	16	12	1	1	3.9	49	6.3	49	5.6	43	6.6	41	4.9	54	5.4	60		
Asian	802		3786	460	57	342	43	201	25	58	7	4.3	54	6.9	53	6.4	50	7.6	48	5.2	58	6.0	66		
Black or African American	8157		3574	5885	72	2272	28	853	10	47	1	3.8	47	5.9	46	5.2	40	6.4	40	4.9	54	5.4	60		
Native Hawaiian or Other Pacific Islander	74		3664	49	66	25	34	15	20	1	1	3.7	47	6.1	47	5.4	42	7.4	46	5.4	60	6.0	66		
White	7729		3738	4426	57	3303	43	1701	22	201	3	4.3	54	6.7	51	5.9	46	7.4	46	5.5	62	6.1	68		
Two or More Races	738		3710	435	59	303	41	157	21	14	2	4.2	53	6.6	51	5.8	45	7.2	45	5.4	60	5.9	66		
No Information Provided	230		4066	80	35	150	65	122	53	27	12	5.2	65	8.2	63	8.0	61	9.0	56	6.3	70	7.2	80		
Economically Disadvantaged		Yes	35187	3568	25528	73	9659	27	3512	10	141	0	3.7	46	5.8	45	5.2	40	6.5	40	4.9	54	5.4	60	
		No	13829	3729	8030	58	5799	42	2990	22	365	3	4.2	53	6.6	51	6.0	46	7.4	46	5.4	60	6.0	67	
		No Information Provided	246	4029	90	37	156	63	122	50	27	11	5.1	64	8.1	62	7.7	59	8.7	55	6.2	68	7.1	79	
Title I, Part A		Participants	28336	3574	20376	72	7960	28	2937	10	131	0	3.7	46	5.8	45	5.3	41	6.5	41	4.9	54	5.4	60	
		Nonparticipants	20679	3668	13182	64	7497	36	3564	17	375	2	4.0	50	6.3	49	5.7	44	7.0	44	5.2	58	5.8	64	
		No Information Provided	247	4022	90	36	157	64	123	50	27	11	5.0	63	8.0	62	7.7	59	8.7	55	6.2	69	7.0	78	
Migrant		Yes	306	3547	225	74	81	26	31	10	1	0	3.6	45	5.8	44	5.0	39	6.6	41	4.7	52	5.2	58	
		No	48694	3614	33322	68	15372	32	6469	13	505	1	3.8	48	6.0	46	5.5	42	6.7	42	5.0	56	5.6	62	
		No Information Provided	262	4000	101	39	161	61	124	47	27	10	5.0	63	7.9	61	7.6	58	8.6	54	6.1	68	6.9	77	
Limited English Proficient		Current LEP	15407	3477	12549	81	2858	19	728	5	2	0	3.3	41	5.2	40	4.9	38	5.9	37	4.4	49	4.9	55	
		Non-LEP (Monitored 1st Year)	258	3660	155	60	103	40	44	17	0	0	4.1	51	6.5	50	5.7	44	7.1	44	5.3	59	6.0	67	
		Non-LEP (Monitored 2nd Year)	430	3746	241	56	189	44	75	17	4	1	4.3	54	6.8	52	6.1	47	7.6	47	5.5	61	6.4	72	
		Non-LEP (Monitored 3rd Year)	235	3778	115	49	120	51	55	23	1	0	4.5	56	6.8	53	6.3	48	8.0	50	5.5	62	6.6	74	
		Non-LEP (Monitored 4th Year)	563	3782	270	48	293	52	131	23	5	1	4.4	55	7.0	54	6.3	49	7.7	48	5.8	64	6.6	74	
		Non-LEP (Post Monitoring)	1062	3822	493	46	569	54	286	27	24	2	4.5	56	7.1	55	6.6	51	8.0	50	5.7	64	6.7	75	
		Other Non-LEP	31030	3667	19717	64	11313	36	5176	17	470	2	4.0	50	6.4	49	5.6	43	7.0	44	5.3	59	5.8	65	
		No Information Provided	277	3987	108	39	169	61	129	47	27	10	4.9	61	7.9	61	7.5	58	8.6	54	6.1	68	6.9	76	
Bilingual		Participants	66	3708	41	62	25	38	13	20	1	2	4.1	51	6.1	47	5.9	45	7.8	48	5.3	58	6.4	71	
		Nonparticipants	48932	3613	33505	68	15427	32	6485	13	505	1	3.8	48	6.0	46	5.5	42	6.7	42	5.0	56	5.6	62	
		No Information Provided	264	3994	102	39	162	61	126	48	27	10	5.0	62	7.9	61	7.6	58	8.6	54	6.1	67	6.9	76	
ESL		Participants	13241	3470	10875	82	2366	18	585	4	2	0	3.3	41	5.2	40	4.9	38	5.8	36	4.4	48	4.9	54	
		Nonparticipants	35758	3666	22673	63	13085	37	5912	17	504	1	4.0	50	6.3	49	5.7	44	7.0	44	5.3	58	5.8	65	
		No Information Provided	263	4001	100	38	163	62	127	48	27	10	5.0	63	7.9	61	7.6	59	8.6	54	6.1	68	6.9	77	
Special Education		Yes	8237	3435	7053	86	1184	14	329	4	4	0	3.3	41	5.3	40	4.7	36	5.5	34	4.3	48	4.4	49	
		No	40779	3649	26505	65	14274	35	6172	15	502	1	3.9	49	6.2	48	5.6	43	7.0	43	5.2	57	5.8	64	
		No Information Provided	246	4028	90	37	156	63	123	50	27	11	5.1	64	8.0	62	7.7	59	8.8	55	6.2	69	7.0	78	
Gifted/Talented		Participants	989	4230	251	25	738	75	568	57	191	19	5.6	70	8.9	69	8.4	65	9.6	60	6.9	77	7.6	84	
		Nonparticipants	48012	3601	33295	69	14717	31	5932	12	315	1	3.8	47	6.0	46	5.4	41	6.7	42	5.0	55	5.5	61	
		No Information Provided	261	3996	102	39	159	61	124	48	27	10	5.0	62	7.9	61	7.6	58	8.6	54	6.0	67	6.9	77	
At-Risk		Yes	39639	3552	29371	74	10268	26	3347	8	53	0	3.6	45	5.7	44	5.2	40	6.4	40	4.8	53	5.3	59	
		No	9384	3873	4193	45	5191	55	3154	34	453	5	4.7	59	7.4	57	6.7	51	8.1	51	6.0	66	6.6	73	
		No Information Provided	239	4045	84	35	155	65	123	51	27	11	5.2	64	8.1	63	7.8	60	8.9	55	6.2	69	7.1	79	

* Results for students who took the test with the Braille, American Sign Language videos accommodation, or the paper STAAR with embedded supports are not included in the reporting category results.



STATE OF TEXAS ASSESSMENTS OF ACADEMIC READINESS

Constructed Responses Summary Report

ENGLISH II

All Students

STATEWIDE

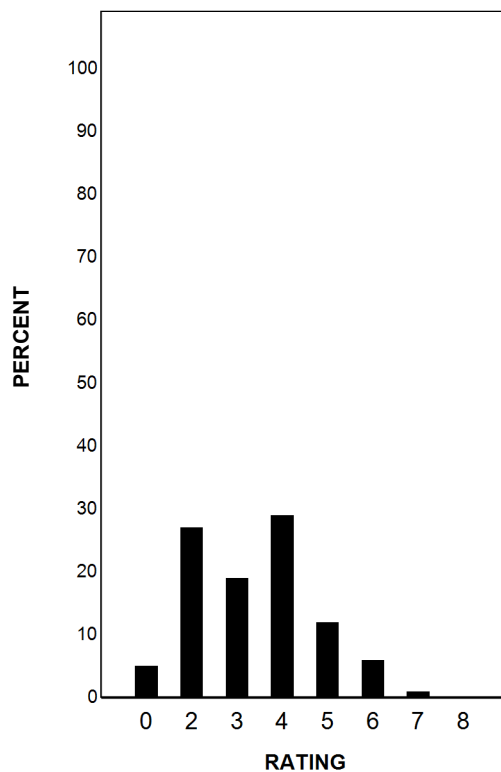
Report Date: SUMMER 2021
Date of Testing: SUMMER 2021

--- = No Data Reported For Fewer Than Five Students

Written Composition Rating Summary*

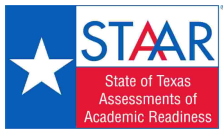
Persuasive Composition

Rating	#	%
0	2587	5
2	13120	27
3	9594	19
4	14112	29
5	5991	12
6	2923	6
7	694	1
8	202	0
Total	49223	100



Each composition has been scored independently by two readers. The written composition rating of 0-8 represents the summation of these scores.

* Results for students who took the test with the Braille, American Sign Language videos accommodation, or the paper STAAR with embedded supports are not included in this report.



STATE OF TEXAS ASSESSMENTS OF ACADEMIC READINESS

Summary Report

ENGLISH II

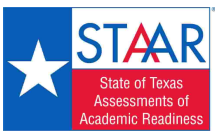
First-Time Tested Students

STATEWIDE

Report Date: SUMMER 2021
Date of Testing: SUMMER 2021

Administration Summary			Number of Students Tested	Average Scale Score	Results for Each Reporting Category*																					
					Number	Percent	Did Not Meet		Approaches		Meets		Masters		1		2		3		4		5		6	
		#					%	#	%	#	%	#	%	#	%	#	%	#	%	#	%	#	%	#	%	
					Number of Points Possible																					
Number of Points Scored																										
Legend																										
--- = No Data Reported For Fewer Than Five Students																										
All Students	7308	90			7308	3961	2750	38	4558	62	3407	47	528	7	5.0	63	8.0	61	7.3	56	8.2	51	6.3	69	6.8	75
Male	3737	3869			1635	44	2102	56	1507	40	202	5	4.8	60	7.4	57	7.0	54	7.5	47	6.1	68	6.5	72		
Female	3565	4059			1109	31	2456	69	1900	53	326	9	5.3	66	8.5	65	7.6	59	8.9	56	6.4	71	7.1	79		
No Information Provided	6	3427	6	100	0	0	0	0	0	0	3.3	42	5.7	44	4.5	35	5.7	35	3.8	43	4.8	54				
Hispanic/Latino	4268	3876	1828	43	2440	57	1724	40	180	4	4.7	59	7.5	58	6.9	53	7.8	49	6.0	67	6.5	72				
American Indian or Alaska Native	16	3902	6	38	10	63	7	44	1	6	5.6	70	8.4	65	7.1	55	7.1	45	6.1	67	6.1	68				
Asian	192	4472	26	14	166	86	141	73	58	30	6.2	77	10.0	77	9.5	73	11.0	69	7.3	82	8.0	89				
Black or African American	1102	3795	544	49	558	51	383	35	47	4	4.6	57	7.3	56	6.5	50	7.2	45	5.7	64	6.2	69				
Native Hawaiian or Other Pacific Islander	20	3863	8	40	12	60	10	50	1	5	4.6	57	7.0	53	7.2	55	7.6	48	6.1	68	6.5	72				
White	1392	4229	269	19	1123	81	924	66	200	14	5.8	73	9.3	71	8.6	66	9.5	59	7.0	78	7.7	85				
Two or More Races	159	4130	42	26	117	74	101	64	14	9	5.6	70	9.0	69	8.1	62	9.0	56	6.9	77	7.3	81				
No Information Provided	159	4289	27	17	132	83	117	74	27	17	5.9	74	9.2	71	9.1	70	10.3	64	6.9	77	7.9	88				
Economically Disadvantaged	Yes	4483	3810	2129	47	2354	53	1585	35	136	3	4.6	57	7.3	56	6.5	50	7.4	46	5.8	65	6.3	71			
	No	2656	4198	587	22	2069	78	1704	64	365	14	5.7	71	9.1	70	8.4	65	9.4	59	6.9	77	7.5	83			
	No Information Provided	169	4253	34	20	135	80	118	70	27	16	5.8	72	9.1	70	8.9	68	10.1	63	6.8	76	7.8	87			
Title I, Part A	Participants	3688	3824	1725	47	1963	53	1332	36	129	3	4.6	58	7.3	56	6.6	51	7.5	47	5.9	65	6.4	71			
	Nonparticipants	3453	4093	992	29	2461	71	1958	57	372	11	5.4	67	8.6	66	7.9	61	8.9	55	6.6	74	7.2	80			
	No Information Provided	167	4253	33	20	134	80	117	70	27	16	5.8	72	9.1	70	8.9	69	10.0	63	6.8	76	7.8	86			
Migrant	Yes	51	3716	29	57	22	43	17	33	1	2	4.4	55	6.7	51	6.1	47	6.8	42	5.4	59	6.0	67			
	No	7085	3956	2685	38	4400	62	3272	46	500	7	5.0	62	7.9	61	7.3	56	8.2	51	6.2	69	6.8	75			
	No Information Provided	172	4237	36	21	136	79	118	69	27	16	5.8	72	9.0	70	8.8	68	9.9	62	6.8	76	7.7	86			
Limited English Proficient	Current LEP	1183	3545	849	72	334	28	169	14	2	0	3.6	45	5.8	44	5.3	41	6.0	37	4.8	53	5.2	58			
	Non-LEP (Monitored 1st Year)	40	3916	14	35	26	65	17	43	0	0	4.8	60	7.8	60	7.2	55	8.6	53	5.6	63	7.0	78			
	Non-LEP (Monitored 2nd Year)	61	4033	17	28	44	72	29	48	4	7	5.6	70	8.5	65	7.5	58	8.7	54	6.6	73	7.1	79			
	Non-LEP (Monitored 3rd Year)	48	4070	9	19	39	81	29	60	1	2	5.4	67	8.6	67	7.8	60	9.4	59	6.6	73	7.6	84			
	Non-LEP (Monitored 4th Year)	150	4002	42	28	108	72	76	51	5	3	5.4	68	8.3	64	7.7	59	8.3	52	6.5	72	7.2	80			
	Non-LEP (Post Monitoring)	262	4169	42	16	220	84	168	64	24	9	5.6	70	9.0	69	8.6	66	9.3	58	6.9	77	7.6	85			
	Other Non-LEP	5385	4031	1739	32	3646	68	2797	52	465	9	5.3	66	8.3	64	7.6	58	8.6	54	6.5	72	7.0	78			
	No Information Provided	179	4232	38	21	141	79	122	68	27	15	5.7	72	9.0	69	8.8	68	10.0	62	6.8	76	7.7	86			
Bilingual	Participants	12	4068	4	33	8	67	8	67	1	8	5.3	67	7.8	60	8.7	67	8.2	51	6.7	74	7.5	83			
	Nonparticipants	7124	3954	2711	38	4413	62	3279	46	500	7	5.0	62	7.9	61	7.2	56	8.2	51	6.2	69	6.8	75			
	No Information Provided	172	4247	35	20	137	80	120	70	27	16	5.8	72	9.1	70	8.9	68	10.1	63	6.8	76	7.7	86			
ESL	Participants	1067	3539	774	73	293	27	150	14	2	0	3.6	45	5.7	44	5.3	40	6.0	37	4.8	53	5.2	58			
	Nonparticipants	6069	4027	1942	32	4127	68	3136	52	499	8	5.2	66	8.3	64	7.6	58	8.6	53	6.5	72	7.0	78			
	No Information Provided	172	4253	34	20	138	80	121	70	27	16	5.8	73	9.1	70	8.9	69	10.1	63	6.8	76	7.8	86			
Special Education	Yes	675	3480	503	75	172	25	96	14	4	1	3.5	44	5.7	44	5.2	40	5.2	33	4.8	53	4.6	52			
	No	6465	4004	2212	34	4253	66	3194	49	497	8	5.1	64	8.2	63	7.5	57	8.5	53	6.4	71	7.0	78			
	No Information Provided	168	4244	35	21	133	79	117	70	27	16	5.8	72	9.0	69	8.9	68	10.0	63	6.8	76	7.7	86			
Gifted/Talented	Participants	537	4625	25	5	512	95	480	89	190	35	6.7	84	10.7	83	10.3	80	11.3	71	7.9	88	8.4	94			
	Nonparticipants	6600	3900	2688	41	3912	59	2809	43	311	5	4.9	61	7.7	59	7.0	54	7.9	49	6.1	68	6.6	74			
	No Information Provided	171	4236	37	22	134	78	118	69	27	16	5.8	72	9.0	69	8.8	68	10.0	62	6.8	75	7.7	86			
At-Risk	Yes	4419	3728	2351	53	2068	47	1267	29	51	1	4.3	54	6.8	53	6.2	48	7.0	44	5.6	62	6.1	68			
	No	2722	4322	366	13	2356	87	2022	74	450	17	6.1	76	9.7	75	9.0	69	10.1	63	7.3	81	7.9	88			
	No Information Provided	167	4257	33	20	134	80	118	71	27	16	5.8	73	9.1	70	8.9	69	10.1	63	6.9	76	7.7	86			

* Results for students who took the test with the Braille, American Sign Language videos accommodation, or the paper STAAR with embedded supports are not included in the reporting category results.



STATE OF TEXAS ASSESSMENTS OF ACADEMIC READINESS
Constructed Responses Summary Report
ENGLISH II
First-Time Tested Students

STATEWIDE

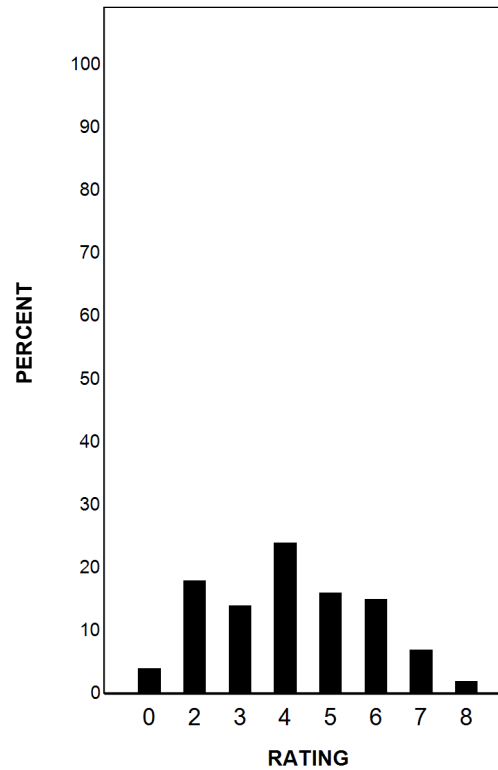
Report Date: SUMMER 2021
Date of Testing: SUMMER 2021

--- = No Data Reported For Fewer Than Five Students

Written Composition Rating Summary*

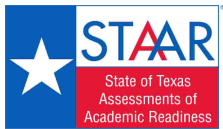
Persuasive Composition

Rating	#	%
0	303	4
2	1291	18
3	986	14
4	1762	24
5	1198	16
6	1099	15
7	482	7
8	178	2
Total	7299	100



Each composition has been scored independently by two readers. The written composition rating of 0-8 represents the summation of these scores.

* Results for students who took the test with the Braille, American Sign Language videos accommodation, or the paper STAAR with embedded supports are not included in this report.



STATE OF TEXAS ASSESSMENTS OF ACADEMIC READINESS

Summary Report

ENGLISH II

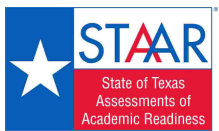
Retested Students

STATEWIDE

Report Date: SUMMER 2021
Date of Testing: SUMMER 2021

Administration Summary			Number of Students Tested	Average Scale Score	Did Not Meet		Approaches		Meets		Masters		Results for Each Reporting Category*																					
					#	%	#	%	#	%	#	%	1		2		3		4		5		6											
Number	Percent																																	
Students Tested			41954	97																														
Students Not Tested																																		
Absent			0	0																														
Other			1196	3																														
Total Documents Submitted			43150	100																														
Legend			--- = No Data Reported For Fewer Than Five Students																															
			#		%		#		%		#		%		#		%		#		%		#		%									
			8		13		13		16		9		9																					
			#		%		#		%		#		%		#		%		#		%		#		%									
All Students			41954	3555	30898	74	11056	26	3217	8	5	0	3.6	45	5.7	44	5.1	40	6.5	40	4.8	53	5.4	60										
Male			25554	3535	19180	75	6374	25	1926	8	1	0	3.6	45	5.6	43	5.1	39	6.2	39	4.8	54	5.2	58										
Female			16400	3586	11718	71	4682	29	1291	8	4	0	3.7	46	5.9	46	5.2	40	6.9	43	4.8	53	5.6	62										
No Information Provided			0	---	---	---	---	---	---	---	---	---	---	---	---	---	---	---	---	---	---	---	---	---										
Hispanic/Latino			27126	3540	20393	75	6733	25	1835	7	4	0	3.5	44	5.6	43	5.1	39	6.4	40	4.7	53	5.3	59										
American Indian or Alaska Native			122	3577	86	70	36	30	9	7	0	0	3.7	47	6.1	47	5.4	41	6.5	41	4.7	53	5.3	59										
Asian			610	3570	434	71	176	29	60	10	0	0	3.7	46	5.9	45	5.5	42	6.6	41	4.6	51	5.3	59										
Black or African American			7055	3540	5341	76	1714	24	470	7	0	0	3.6	45	5.7	44	5.0	39	6.3	39	4.8	53	5.3	59										
Native Hawaiian or Other Pacific Islander			54	3591	41	76	13	24	5	9	0	0	3.4	43	5.8	44	4.8	37	7.3	46	5.1	57	5.8	64										
White			6337	3630	4157	66	2180	34	777	12	1	0	4.0	50	6.1	47	5.4	41	6.9	43	5.2	58	5.8	64										
Two or More Races			579	3594	393	68	186	32	56	10	0	0	3.8	48	6.0	46	5.2	40	6.7	42	5.0	55	5.5	62										
No Information Provided			71	3567	53	75	18	25	5	7	0	0	3.6	45	5.9	46	5.4	41	6.1	38	4.9	54	5.5	61										
Economically Disadvantaged			30704	3532	23399	76	7305	24	1927	6	5	0	3.5	44	5.6	43	5.1	39	6.3	40	4.7	52	5.2	58										
Yes			11173	3618	7443	67	3730	33	1286	12	0	0	3.9	49	6.0	46	5.4	42	6.9	43	5.1	57	5.7	63										
No Information Provided			77	3537	56	73	21	27	4	5	0	0	3.5	44	5.9	45	5.2	40	5.8	36	4.7	52	5.5	61										
Title I, Part A			24648	3536	18651	76	5997	24	1605	7	2	0	3.5	44	5.6	43	5.1	39	6.4	40	4.7	52	5.3	59										
Participants			17226	3582	12190	71	5036	29	1606	9	3	0	3.7	47	5.9	45	5.3	40	6.6	41	4.9	55	5.5	61										
Nonparticipants			80	3538	57	71	23	29	6	8	0	0	3.5	43	5.9	45	5.2	40	6.0	37	4.8	53	5.4	60										
No Information Provided			255	3513	196	77	59	23	14	5	0	0	3.4	43	5.6	43	4.8	37	6.5	41	4.5	50	5.1	57										
Migrant			41609	3555	30637	74	10972	26	3197	8	5	0	3.6	45	5.7	44	5.1	40	6.5	40	4.8	53	5.4	60										
Yes			90	3548	65	72	25	28	6	7	0	0	3.6	45	5.8	45	5.2	40	6.0	37	4.8	53	5.4	60										
No Information Provided			14224	3471	11700	82	2524	18	559	4	0	0	3.3	41	5.2	40	4.9	38	5.9	37	4.4	48	4.9	54										
Limited English Proficient			218	3613	141	65	77	35	27	12	0	0	3.9	49	6.2	48	5.4	42	6.8	42	5.2	58	5.8	65										
Non-LEP (Monitored 1st Year)			369	3699	224	61	145	39	46	12	0	0	4.1	51	6.5	50	5.9	45	7.4	46	5.3	59	6.3	70										
Non-LEP (Monitored 2nd Year)			187	3703	106	57	81	43	26	14	0	0	4.3	53	6.4	49	5.9	45	7.6	47	5.3	59	6.4	71										
Non-LEP (Monitored 3rd Year)			413	3702	228	55	185	45	55	13	0	0	4.0	50	6.5	50	5.8	45	7.5	47	5.5	62	6.4	71										
Non-LEP (Monitored 4th Year)			800	3709	451	56	349	44	118	15	0	0	4.1	52	6.5	50	5.9	45	7.6	47	5.3	59	6.4	71										
Non-LEP (Post Monitoring)			25645	3591	17978	70	7667	30	2379	9	5	0	3.8	47	5.9	46	5.2	40	6.7	42	5.0	56	5.6	62										
Other Non-LEP			98	3539	70	71	28	29	7	7	0	0	3.4	43	5.8	45	5.2	40	6.0	38	4.8	53	5.4	60										
No Information Provided			54	3628	37	69	17	31	5	9	0	0	3.8	48	5.7	44	5.3	41	7.7	48	4.9	55	6.1	68										
Bilingual			41808	3555	30794	74	11014	26	3206	8	5	0	3.6	45	5.7	44	5.1	40	6.5	40	4.8	53	5.4	60										
Participants			92	3522	67	73	25	27	6	7	0	0	3.5	44	5.7	44	5.1	39	5.9	37	4.7	52	5.2	58										
No Information Provided			12174	3464	10101	83	2073	17	435	4	0	0	3.3	41	5.2	40	4.9	37	5.8	36	4.3	48	4.8	54										
ESL			29689	3593	20731	70	8958	30	2776	9	5	0	3.8	47	5.9	46	5.3	40	6.7	42	5.0	56	5.6	62										
Participants			91	3524	66	73	25	27	6	7	0	0	3.5	44	5.7	44	5.1	39	5.9	37	4.7	52	5.2	58										
No Information Provided			7562	3431	6550	87	1012	13	233	3	0	0	3.3	41	5.2	40	4.6	35	5.5	35	4.2	47	4.4	49										
Special Education			34314	3582	24293	71	10021	29	2978	9	5	0	3.7	46	5.8	45	5.3	40	6.7	42	4.9	55	5.6	62										
Yes			78	3563	55	71	23	29	6	8	0	0	3.6	45	5.9	46	5.2	40	6.2	39	4.8	54	5.5	61										
No Information Provided			452	3761	226	50	226	50	88	19	1	0	4.2	53	6.8	53	6.1	47	7.6	48	5.8	64	6.6	74										
Gifted/Talented			41412	3553	30607	74	10805	26	3123	8	4	0	3.6	45	5.7	44	5.1	40	6.5	40	4.8	53	5.4	59										
Participants			90	3539	65	72	25	28	6	7	0	0	3.5	44	5.8	44	5.1	39	6.0	38	4.7	52	5.4	60										
No Information Provided			35220	3530	27020	77	8200	23	2080	6	2	0	3.5	44	5.6	43	5.0	39	6.3	39	4.7	52	5.2	58										
At-Risk			6662	3690	3827	57	2835	43	1132	17	3	0	4.2	52	6.5	50	5.8	44	7.3	46	5.4	60	6.1	68										
Yes			72	3553	51	71	21	29	5	7	0	0	3.6	45	5.9	45	5.2	40	6.1	38	4.7	53	5.5	61										
No Information Provided																																		

* Results for students who took the test with the Braille, American Sign Language videos accommodation, or the paper STAAR with embedded supports are not included in the reporting category results.



STATE OF TEXAS ASSESSMENTS OF ACADEMIC READINESS

Constructed Responses Summary Report

ENGLISH II

Retested Students

STATEWIDE

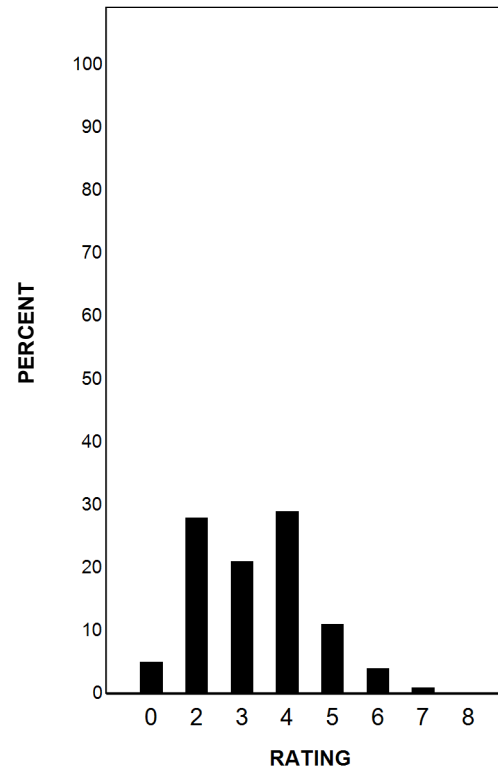
Report Date: SUMMER 2021
Date of Testing: SUMMER 2021

--- = No Data Reported For Fewer Than Five Students

Written Composition Rating Summary*

Persuasive Composition

Rating	#	%
0	2284	5
2	11829	28
3	8608	21
4	12350	29
5	4793	11
6	1824	4
7	212	1
8	24	0
Total	41924	100



Each composition has been scored independently by two readers. The written composition rating of 0-8 represents the summation of these scores.

* Results for students who took the test with the Braille, American Sign Language videos accommodation, or the paper STAAR with embedded supports are not included in this report.