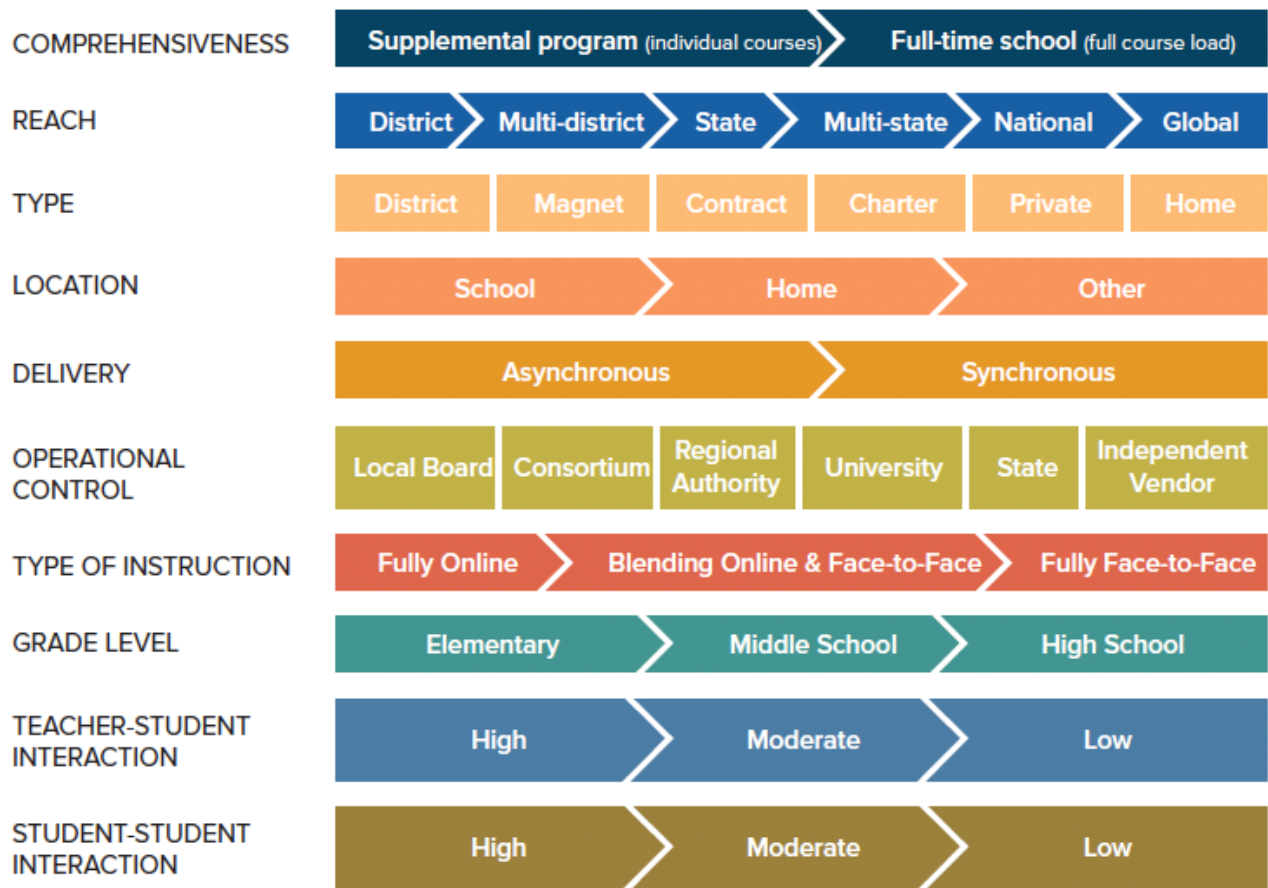




John Watson

Founder
Evergreen Education Group

FIGURE 1: The Defining Dimensions of Online Programs



Contrasting emergency remote learning and online learning

When physical schools closed and instruction shifted from brick-and-mortar classrooms to teaching primarily via live video, many observers said that these schools were now online.

But emergency remote learning looked very different from the instruction that experienced online educators had developed over decades.

EMERGENCY REMOTE LEARNING

Implemented with little planning by necessity

Temporary

For all classes

For most if not all students in a district

For most if not all teachers in a district

Little teacher PD in most cases because of time

Mostly synchronous, group classes

Limited onboarding processes for students

Coursework delivered to full class

VS

ONLINE LEARNING

Planned for months if not years

Short- or long-term, based on the student

For any number of classes, from one to all

For a small subset of students

For a small subset of teachers

Extensive teacher PD and support

Mostly asynch and/or one on one

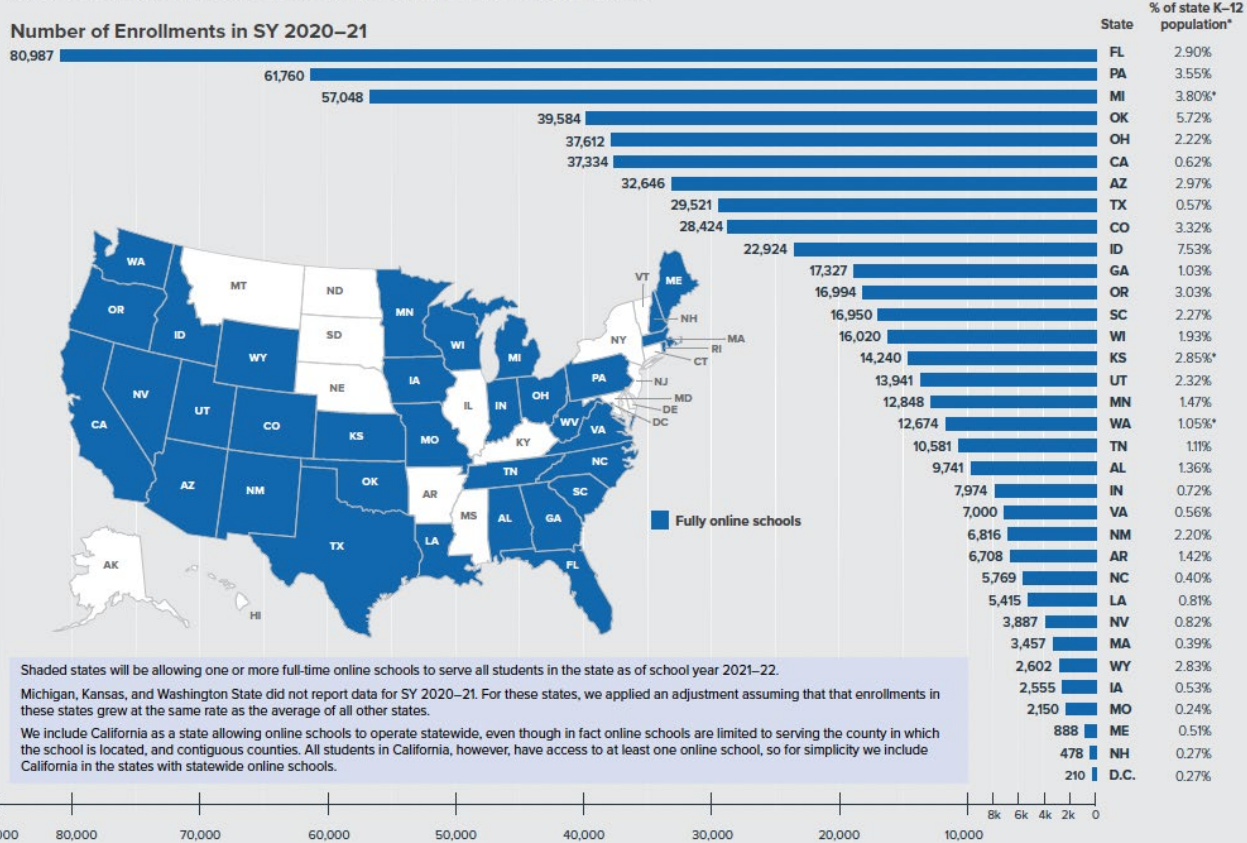
Extensive and often standardized onboarding for new students

Teachers often personalize learning for each student

2021

States with Statewide Fully Online Schools

Number of student enrollments by state and percentage of state's K-12 population





SPACE: A physical school building combined with students learning from home, libraries, coffee shops, etc.



TIME: A combination of onsite and online, in almost any combination that's not 100% of either. Most hybrid schools are somewhere closer to the middle of the continuum, or have options for students to be along the middle of the continuum.



CONTENT: Online content supports learning to free some teacher and to focus on relationships. Content includes SEL and PBL components.



TECHNOLOGY PLATFORM: Supports teacher understanding of student's academic status in a class, and "champion" understanding of student's academic standing across classes, as well as "life status."



RELATIONSHIPS: Hybrid schools prioritize relationships between students and adults, who serves as students' champions, mentors, and supporters. These adults may be teachers, counselors, or have other titles.