

**TEXAS  
EDUCATION  
AGENCY**

**AUSTIN, TEXAS**

**Secondary School  
Completion and Dropouts  
in Texas Public Schools  
1999-00**

**County Listings**

*Alphabetic by County*

**DEPARTMENT OF  
ACCOUNTABILITY  
REPORTING AND  
RESEARCH**

**DIVISION OF  
RESEARCH AND  
EVALUATION**

**AUGUST 2001**

**Citation.** Texas Education Agency. 2001. *Secondary school completion and dropouts in Texas public schools, 1999-00: County listings* (GE01 601 12). Austin, TX: Author.

**Keywords.** *Secondary school completion; high school; annual dropout rates; longitudinal dropout rates.*

Material in this publication is not copyrighted and may be reproduced. The Texas Education Agency would appreciate credit for the material used and a copy of the reprint. Additional information about this report may be obtained from the Division of Research and Evaluation at (512) 475-3523, or from the Research and Evaluation website at <http://www.tea.state.tx.us/research/>.

**Secondary School  
Completion and Dropouts  
in Texas Public Schools  
1999-00**

**County Listings**

Alphabetic by County

**TEXAS EDUCATION AGENCY  
DEPARTMENT OF ACCOUNTABILITY REPORTING AND RESEARCH  
DIVISION OF RESEARCH AND EVALUATION**

**AUSTIN, TEXAS  
AUGUST 2001**



**Texas Education Agency**  
Jim Nelson  
Commissioner of Education

**Office of Finance and Accountability**  
Ron McMichael  
Deputy Commissioner

**Department of Accountability Reporting and Research**  
Criss Cloudt  
Associate Commissioner

**Division of Research and Evaluation**

**Project Staff**  
Karen Ann Dvorak  
Linda A. Roska  
Catherine A. Christner  
Spring W. Lee



**Secondary School Completion and Dropouts  
in Texas Public Schools, 1999-00:  
County Listings**

**Contents**

**Introduction ..... 1**

**Calculations..... 1**

**County Listings..... 3**

    Table 1. Annual Dropout Rates, Grades 7-12, by Student Group, 1999-00: County Listing..... 5

    Table 2. Longitudinal Dropout and Completion Rates, Grades 9-12, by Student Group, Classes of  
        1999 and 2000: County Listing..... 11

    Notes on Tables 1 and 2 ..... 47

    Figure 1. Comparing Annual and Longitudinal Dropout Counts at the District or Campus Level ..... 49

**References..... 53**





# Secondary School Completion and Dropouts in Texas Public Schools, 1999-00: County Listings

## Introduction

The listings in this report provide secondary school completion and dropout data at the county level as a supplement to *Secondary School Completion and Dropouts in Texas Public Schools, 1999-00* (Texas Education Agency (TEA), 2001a), *Secondary School Completion and Dropouts in Texas Public Schools, 1999-00: Supplemental District Data* (TEA, 2001c), and *Secondary School Completion and Dropouts in Texas Public Schools, 1999-00: District and Campus Listings* (TEA, 2001b). This supplement includes annual dropout rates and longitudinal rates for secondary school graduates, General Educational Development (GED) recipients, continuing students, and dropouts. County listings of 1999-00 annual dropout rates and completion/student status rates for the classes of 1999 and 2000 are presented. A schematic is provided illustrating the relationship, at the district or campus level, of annual and longitudinal dropout counts.

## Calculations

All data used in this report were collected and reported by Texas school districts and charter schools through the Public Education Information Management System (PEIMS) maintained by the TEA. The rate calculations are the same as those used in the Academic Excellence Indicator System (AEIS).

In this report, the annual dropout rate is the percentage of students who dropped out of Grades 7-12 during the 1999-00 school year:

$$\text{annual dropout rate} = \frac{\text{number of dropouts during the school year}}{\text{total number of students served during the school year}} \times 100$$

Dropouts are defined and counted as per *1999-2000 Public Education Information Management System Data Standards* (TEA, 1999), the *2000-2001 Public Education Information Management System Data Standards* (TEA, 2000), the *2001 Accountability Manual* (TEA, 2001d), and *Secondary School Completion and Dropouts in Texas Public Schools, 1999-00* (TEA, 2001a). The total number of students in the denominator is the cumulative number of students in attendance in the county at any time during the school year. The 1999-00 annual dropout rate is a base indicator in the 2000 campus and district ratings.

In 1998-99, TEA introduced a new set of longitudinal rates. These rates show the high school outcomes for the members of a Grade 9 cohort of students. Students who transferred out are removed from the cohort. Students who transferred in on grade-level are added to the cohort. The final status of each student is determined the year graduation was expected, or four years after entering Grade 9. The final four outcomes included are: graduated, received a GED certificate, continued high school, or dropped out. As

an example, the longitudinal rate for graduates is calculated by dividing the number of students who graduated by the number of students in the cohort:

$$\text{longitudinal rate, graduated} = \frac{\text{number of students graduating by year 4}}{(\text{number of students entering Grade 9}) - (\text{transfers out}) + (\text{transfers in})} \times 100$$

Longitudinal rates for GED recipients, students who continued high school, and dropouts are calculated in a similar manner. The sum of the four rates is equal to 100 percent. This year, rates are reported for two years: the class of 1999, or the 1995-96 Grade 9 cohort, and the class of 2000, or the 1996-97 Grade 9 cohort. The class of 1999 and class of 2000 longitudinal rates are report-only indicators in the 2001 AEIS.

## **County Listings**



**Table 1**  
**Annual Dropout Rates, Grades 7-12, by Student Group, 1999-00:**  
**County Listing**



Table 1. Annual Dropout Rates, Grades 7-12, by Student Group, 1999-00: County Listing

County	All Students			Rate by Student Group %			
	Dropouts	Total	Rate %	Afr. Am.	Hispanic	White	Econ. Dis.
ANDERSON	27	4,098	0.7	0.4	0.5	0.7	0.3
ANDREWS	4	1,658	0.2	-	-	-	-
ANGELINA	94	7,567	1.2	1.4	1.6	1.1	1.1
ARANSAS	8	1,816	0.4	0.0	0.4	0.4	0.5
ARCHER	6	1,067	0.6	0.0	5.0	0.3	1.0
ARMSTRONG	0	204	0.0	0.0	0.0	0.0	0.0
ATASCOSA	33	3,921	0.8	6.7	1.1	0.3	0.9
AUSTIN	10	2,638	0.4	0.0	1.0	0.3	0.5
BAILEY	5	756	0.7	0.0	1.0	0.0	0.8
BANDERA	14	1,505	0.9	0.0	0.4	1.0	1.1
BASTROP	59	5,353	1.1	1.0	1.6	0.8	0.9
BAYLOR	0	367	0.0	0.0	0.0	0.0	0.0
BEE	11	2,736	0.4	0.0	0.5	0.3	0.3
BELL	247	22,168	1.1	1.5	1.8	0.7	1.0
BEXAR	2,226	118,590	1.9	2.0	2.3	1.0	1.5
BLANCO	10	793	1.3	0.0	2.1	1.0	0.9
BORDEN	0	98	0.0	0.0	0.0	0.0	0.0
BOSQUE	19	1,578	1.2	1.5	3.2	0.7	1.6
BOWIE	102	7,864	1.3	2.2	1.1	0.9	1.0
BRAZORIA	70	22,187	0.3	0.2	0.3	0.3	0.2
BRAZOS	149	9,750	1.5	2.2	2.5	0.9	1.8
BREWSTER	9	733	1.2	0.0	1.7	0.3	0.8
BRISCOE	0	118	0.0	0.0	0.0	0.0	0.0
BROOKS	19	896	2.1	0.0	2.0	3.2	2.3
BROWN	29	3,698	0.8	1.3	1.8	0.4	1.1
BURLESON	25	1,651	1.5	1.6	2.2	1.3	0.7
BURNET	42	3,105	1.4	0.0	2.3	1.2	1.4
CALDWELL	45	3,244	1.4	0.7	2.0	0.9	1.6
CALHOUN	6	1,928	0.3	0.0	0.3	0.3	0.2
CALLAHAN	7	1,575	0.4	0.0	1.7	0.3	0.2
CAMERON	422	37,698	1.1	0.0	1.2	0.4	0.9
CAMP	1	993	0.1	-	-	-	-
CARSON	0	669	0.0	0.0	0.0	0.0	0.0
CASS	5	2,990	0.2	0.4	0.0	0.1	0.3
CASTRO	11	1,004	1.1	0.0	1.5	0.3	1.3
CHAMBERS	7	2,375	0.3	0.8	0.0	0.3	0.0
CHEROKEE	21	3,485	0.6	0.9	0.6	0.5	0.7
CHILDRESS	0	581	0.0	0.0	0.0	0.0	0.0
CLAY	5	1,044	0.5	0.0	4.3	0.3	0.4
COCHRAN	11	546	2.0	0.0	3.8	0.0	2.7
COKE	2	1,145	0.2	-	-	-	-
COLEMAN	4	816	0.5	-	-	-	-
COLLIN	125	37,459	0.3	0.7	0.8	0.2	0.6
COLLINGSWORTH	2	379	0.5	-	-	-	-
COLORADO	6	2,246	0.3	0.9	0.2	0.1	0.0
COMAL	76	8,418	0.9	1.6	1.4	0.7	1.1
COMANCHE	9	1,240	0.7	0.0	1.5	0.4	0.7
CONCHO	0	287	0.0	0.0	0.0	0.0	0.0
COOKE	22	2,929	0.8	0.7	1.5	0.7	0.7
CORYELL	50	5,196	1.0	1.3	1.4	0.8	1.1
COTTLE	4	188	2.1	-	-	-	-
CRANE	6	549	1.1	0.0	1.5	0.8	0.0
CROCKETT	0	451	0.0	0.0	0.0	0.0	0.0
CROSBY	10	787	1.3	2.4	1.3	1.1	1.0
CULBERSON	0	329	0.0	0.0	0.0	0.0	0.0
DALLAM	3	801	0.4	-	-	-	-
DALLAS	1,705	174,443	1.0	1.3	1.3	0.5	1.0
DAWSON	13	1,568	0.8	3.8	1.0	0.4	0.4
DEAF SMITH	38	2,088	1.8	3.7	2.3	0.3	1.3
DELTA	10	580	1.7	2.9	0.0	1.5	2.4
DENTON	172	30,643	0.6	0.9	1.2	0.4	1.0
DEWITT	15	2,430	0.6	1.1	0.7	0.5	0.4
DICKENS	5	214	2.3	7.1	4.5	0.8	0.8
DIMITT	20	1,252	1.6	0.0	1.8	0.0	1.5
DONLEY	4	349	1.1	-	-	-	-

Note: A dash (-) indicates data are not reported to protect student anonymity.

Table 1. Annual Dropout Rates, Grades 7-12, by Student Group, 1999-00: County Listing

County	All Students			Rate by Student Group %			
	Dropouts	Total	Rate %	Afr. Am.	Hispanic	White	Econ. Dis.
DUVAL	18	1,451	1.2	0.0	1.2	0.9	1.1
EASTLAND	7	1,703	0.4	0.0	0.4	0.4	0.3
ECTOR	275	12,772	2.2	2.5	2.5	1.8	1.7
EDWARDS	6	392	1.5	0.0	2.6	0.5	0.4
EL PASO	1,223	71,202	1.7	1.5	1.8	1.1	1.3
ELLIS	81	11,609	0.7	1.2	1.3	0.4	1.0
ERATH	10	2,621	0.4	0.0	0.9	0.3	0.1
FALLS	11	1,490	0.7	1.6	0.0	0.4	0.7
FANNIN	13	2,407	0.5	1.9	0.9	0.4	0.8
FAYETTE	11	1,923	0.6	0.6	0.3	0.6	0.4
FISHER	1	367	0.3	-	-	-	-
FLOYD	11	868	1.3	2.4	2.1	0.0	0.8
FOARD	0	161	0.0	0.0	0.0	0.0	0.0
FORT BEND	250	36,023	0.7	0.7	1.2	0.4	0.9
FRANKLIN	2	751	0.3	-	-	-	-
FREESTONE	16	1,577	1.0	0.6	5.3	0.6	1.1
FRIO	10	1,466	0.7	0.0	0.8	0.0	0.6
GAINES	15	1,457	1.0	0.0	1.8	0.4	1.4
GALVESTON	299	31,353	1.0	1.2	1.7	0.7	1.2
GARZA	2	665	0.3	-	-	-	-
GILLESPIE	18	1,727	1.0	0.0	2.5	0.6	1.4
GLASSCOCK	0	173	0.0	0.0	0.0	0.0	0.0
GOLIAD	3	733	0.4	-	-	-	-
GONZALES	34	1,919	1.8	3.2	2.2	0.8	1.1
GRAY	15	2,025	0.7	2.6	0.9	0.6	1.7
GRAYSON	82	9,812	0.8	1.2	0.8	0.8	0.9
GREGG	148	11,276	1.3	2.2	1.8	0.9	1.3
GRIMES	29	2,126	1.4	2.8	1.7	0.7	1.4
GUADALUPE	66	7,888	0.8	0.7	1.4	0.5	1.0
HALE	88	3,987	2.2	2.4	3.2	0.5	1.4
HALL	6	421	1.4	0.0	2.2	1.0	1.4
HAMILTON	0	806	0.0	0.0	0.0	0.0	0.0
HANSFORD	4	621	0.6	-	-	-	-
HARDEMAN	0	482	0.0	0.0	0.0	0.0	0.0
HARDIN	35	5,380	0.7	1.2	0.0	0.6	0.8
HARRIS	4,803	280,868	1.7	2.6	2.4	0.7	1.6
HARRISON	48	6,433	0.7	1.2	1.6	0.5	0.4
HARTLEY	2	185	1.1	-	-	-	-
HASKELL	1	594	0.2	-	-	-	-
HAYS	86	9,275	0.9	0.3	1.6	0.5	1.0
HEMPHILL	3	600	0.5	-	-	-	-
HENDERSON	60	4,872	1.2	3.5	2.6	0.8	0.8
HIDALGO	1,192	60,914	2.0	1.6	2.0	0.6	1.6
HILL	27	2,965	0.9	1.4	1.7	0.7	1.0
HOCKLEY	32	2,572	1.2	3.6	1.9	0.3	1.0
HOOD	37	3,462	1.1	0.0	2.5	0.9	0.5
HOPKINS	56	2,984	1.9	1.5	1.5	2.0	2.0
HOUSTON	16	1,887	0.8	1.2	1.9	0.5	1.1
HOWARD	17	2,862	0.6	0.0	0.5	0.7	1.1
HUDSPETH	3	415	0.7	-	-	-	-
HUNT	90	7,099	1.3	2.7	1.9	0.9	1.7
HUTCHINSON	29	2,492	1.2	5.4	1.0	1.1	0.3
IRION	0	203	0.0	0.0	0.0	0.0	0.0
JACK	19	889	2.1	0.0	1.4	2.2	3.0
JACKSON	3	1,687	0.2	-	-	-	-
JASPER	24	3,615	0.7	0.7	0.0	0.7	0.5
JEFF DAVIS	6	301	2.0	11.1	1.8	0.6	4.3
JEFFERSON	279	20,735	1.3	1.9	1.7	0.7	1.6
JIM HOGG	1	587	0.2	-	-	-	-
JIM WELLS	45	4,300	1.0	0.0	1.1	0.8	1.0
JOHNSON	133	12,140	1.1	0.6	1.8	1.0	1.2
JONES	16	1,572	1.0	0.0	1.5	1.0	1.0
KARNES	11	1,293	0.9	0.0	1.4	0.2	0.8
KAUFMAN	80	8,345	1.0	1.8	1.5	0.7	1.2
KENDALL	7	2,878	0.2	0.0	0.9	0.1	0.5

Note: A dash (-) indicates data are not reported to protect student anonymity.



Table 1. Annual Dropout Rates, Grades 7-12, by Student Group, 1999-00: County Listing

County	All Students			Rate by Student Group %			
	Dropouts	Total	Rate %	Afr. Am.	Hispanic	White	Econ. Dis.
KENT	0	102	0.0	0.0	0.0	0.0	0.0
KERR	44	3,773	1.2	0.8	1.9	0.9	1.2
KIMBLE	9	406	2.2	0.0	2.5	2.1	2.4
KING	0	45	0.0	0.0	0.0	0.0	0.0
KINNEY	1	312	0.3	-	-	-	-
KLEBERG	45	3,063	1.5	3.1	1.6	0.8	1.4
KNOX	2	470	0.4	-	-	-	-
LA SALLE	14	744	1.9	0.0	2.2	0.9	1.7
LAMAR	25	4,041	0.6	0.4	0.0	0.7	0.4
LAMB	13	1,745	0.7	0.0	1.3	0.1	0.9
LAMPASAS	8	2,006	0.4	0.0	1.6	0.1	0.9
LAVACA	4	1,102	0.4	-	-	-	-
LEE	6	1,559	0.4	0.8	0.3	0.3	0.4
LEON	13	1,568	0.8	0.5	0.9	0.9	0.9
LIBERTY	44	6,850	0.6	0.7	0.9	0.6	0.3
LIMESTONE	9	1,946	0.5	0.6	0.3	0.4	0.3
LIPSCOMB	3	347	0.9	-	-	-	-
LIVE OAK	6	1,027	0.6	0.0	0.6	0.5	0.9
LLANO	9	823	1.1	0.0	3.0	0.9	1.4
LUBBOCK	228	20,234	1.1	2.0	1.9	0.4	1.0
LYNN	7	813	0.9	0.0	1.6	0.0	0.9
MADISON	3	1,101	0.3	-	-	-	-
MARION	11	773	1.4	0.3	20.0	2.0	0.8
MARTIN	7	535	1.3	0.0	1.8	0.8	2.0
MASON	0	340	0.0	0.0	0.0	0.0	0.0
MATAGORDA	20	3,864	0.5	1.1	0.8	0.1	0.8
MAVERICK	17	5,467	0.3	0.0	0.3	0.0	0.2
MCCULLOCH	6	848	0.7	0.0	0.3	0.9	0.3
MCLENNAN	254	18,478	1.4	2.6	2.2	0.6	1.2
MCMULLEN	0	94	0.0	0.0	0.0	0.0	0.0
MEDINA	55	4,138	1.3	2.3	2.0	0.6	1.9
MENARD	1	260	0.4	-	-	-	-
MIDLAND	169	11,929	1.4	1.9	2.0	0.9	1.5
MILAM	9	2,376	0.4	0.6	0.5	0.3	0.3
MILLS	4	607	0.7	-	-	-	-
MITCHELL	2	727	0.3	-	-	-	-
MONTAGUE	28	1,667	1.7	0.0	2.7	1.6	1.5
MONTGOMERY	233	26,552	0.9	1.1	1.4	0.8	1.0
MOORE	8	2,167	0.4	5.0	0.4	0.2	0.5
MORRIS	13	1,297	1.0	0.9	1.7	1.0	0.9
MOTLEY	1	133	0.8	-	-	-	-
NACOGDOCHES	32	4,864	0.7	1.4	1.2	0.3	0.7
NAVARRO	44	4,085	1.1	2.1	1.6	0.6	1.0
NEWTON	2	1,253	0.2	-	-	-	-
NOLAN	18	1,763	1.0	2.1	1.5	0.5	1.7
NUECES	476	30,374	1.6	1.5	2.1	0.6	1.5
OCHILTREE	8	933	0.9	0.0	0.9	0.8	0.9
OLDHAM	4	558	0.7	-	-	-	-
ORANGE	56	8,149	0.7	2.3	0.0	0.5	0.5
PALO PINTO	22	2,350	0.9	1.4	1.4	0.8	1.1
PANOLA	20	1,945	1.0	1.4	1.3	0.9	1.1
PARKER	55	8,023	0.7	0.0	0.6	0.7	0.4
PARMER	6	1,199	0.5	0.0	0.9	0.0	0.5
PECOS	36	1,810	2.0	2.3	2.7	0.4	3.2
POLK	15	3,300	0.5	0.0	1.0	0.5	0.5
POTTER	214	14,406	1.5	1.6	2.2	1.2	1.6
PRESIDIO	27	951	2.8	0.0	3.0	0.0	3.0
RAINS	3	739	0.4	-	-	-	-
RANDALL	9	4,034	0.2	0.0	0.6	0.1	0.3
REAGAN	0	493	0.0	0.0	0.0	0.0	0.0
REAL	2	150	1.3	-	-	-	-
RED RIVER	6	1,335	0.4	0.6	3.0	0.2	0.5
REEVES	42	1,590	2.6	0.0	2.9	1.0	2.0
REFUGIO	9	818	1.1	0.0	1.2	1.2	1.0
ROBERTS	0	108	0.0	0.0	0.0	0.0	0.0

Note: A dash (-) indicates data are not reported to protect student anonymity.

Table 1. Annual Dropout Rates, Grades 7-12, by Student Group, 1999-2000: County Listing

County	All Students			Rate by Student Group %			
	Dropouts	Total	Rate %	Afr. Am.	Hispanic	White	Econ. Dis.
ROBERTSON	48	1,496	3.2	5.7	5.7	0.9	2.9
ROCKWALL	39	4,672	0.8	1.6	0.8	0.8	0.4
RUNNELS	14	1,279	1.1	3.7	1.0	1.1	1.0
RUSK	43	3,775	1.1	1.1	2.6	0.9	1.5
SABINE	1	783	0.1	-	-	-	-
SAN AUGUSTINE	7	731	1.0	0.3	0.0	1.5	1.0
SAN JACINTO	25	1,793	1.4	1.9	0.0	1.4	0.7
SAN PATRICIO	67	7,880	0.9	0.8	1.3	0.3	0.8
SAN SABA	1	584	0.2	-	-	-	-
SCHLEICHER	1	352	0.3	-	-	-	-
SCURRY	23	1,617	1.4	0.0	2.1	1.0	1.7
SHACKELFORD	2	340	0.6	-	-	-	-
SHELBY	33	2,136	1.5	1.4	1.2	1.7	1.1
SHERMAN	0	461	0.0	0.0	0.0	0.0	0.0
SMITH	205	14,375	1.4	2.1	2.9	0.8	1.3
SOMERVELL	4	813	0.5	-	-	-	-
STARR	218	6,401	3.4	0.0	3.4	0.0	2.3
STEPHENS	16	901	1.8	6.7	2.2	1.6	1.7
STERLING	0	155	0.0	0.0	0.0	0.0	0.0
STONEWALL	0	168	0.0	0.0	0.0	0.0	0.0
SUTTON	4	436	0.9	-	-	-	-
SWISHER	11	968	1.1	0.0	2.0	0.4	0.6
TARRANT	1,774	118,814	1.5	2.2	2.4	1.0	1.3
TAYLOR	54	11,505	0.5	0.9	0.7	0.4	0.6
TERRELL	2	127	1.6	-	-	-	-
TERRY	2	1,338	0.1	-	-	-	-
THROCKMORTON	2	193	1.0	-	-	-	-
TITUS	17	2,516	0.7	1.5	0.8	0.4	0.7
TOM GREEN	121	9,707	1.2	0.9	2.3	0.5	1.1
TRAVIS	1,071	50,149	2.1	2.9	3.2	1.1	2.6
TRINITY	7	1,345	0.5	0.0	1.1	0.6	0.2
TYLER	22	1,915	1.1	1.7	0.0	1.0	1.3
UPSHUR	23	3,362	0.7	0.2	1.4	0.6	0.5
UPTON	4	474	0.8	-	-	-	-
UVALDE	82	2,982	2.7	0.0	3.4	0.9	2.4
VAL VERDE	76	4,661	1.6	0.0	1.7	1.3	1.1
VAN ZANDT	16	4,843	0.3	0.0	0.3	0.4	0.0
VICTORIA	155	7,562	2.0	2.1	3.2	0.8	2.4
WALKER	26	4,091	0.6	1.1	0.6	0.4	0.6
WALLER	39	3,202	1.2	1.5	1.9	0.8	1.5
WARD	31	1,256	2.5	0.0	3.9	1.3	1.9
WASHINGTON	2	2,681	0.1	-	-	-	-
WEBB	197	19,956	1.0	3.7	1.0	0.6	0.9
WHARTON	7	4,345	0.2	0.5	0.1	0.1	0.0
WHEELER	1	512	0.2	-	-	-	-
WICHITA	110	10,684	1.0	1.6	2.0	0.8	1.2
WILBARGER	10	1,683	0.6	0.7	0.4	0.6	0.8
WILLACY	61	2,252	2.7	0.0	2.8	0.8	2.1
WILLIAMSON	214	27,450	0.8	1.2	1.3	0.6	1.2
WILSON	64	3,427	1.9	2.0	2.2	1.5	2.3
WINKLER	1	926	0.1	-	-	-	-
WISE	11	4,089	0.3	0.0	0.2	0.3	0.6
WOOD	21	3,085	0.7	1.4	1.4	0.6	0.9
YOAKUM	7	1,081	0.6	0.0	0.9	0.2	0.6
YOUNG	3	1,786	0.2	-	-	-	-
ZAPATA	26	1,263	2.1	0.0	2.0	2.6	1.5
ZAVALA	24	1,148	2.1	0.0	2.0	5.9	1.8

Note: A dash (-) indicates data are not reported to protect student anonymity.

**Table 2**

**Longitudinal Dropout and Completion Rates, Grades 9-12, by Student Group,  
Classes of 1999 and 2000: County Listing**



Table 2. Longitudinal Dropout and Completion Rates, Grades 9-12, by Student Group, Classes of 1999 and 2000: County Listing

County	Class	Final Status	Number	Number in Cohort	Rate %				
					All Students	Afr. Am.	Hispanic	White	Econ. Dis.
ANDERSON	2000	Graduated	466	535	87.1	86.8	77.8	87.7	86.6
		Received GED	35	535	6.5	3.3	7.4	7.2	0.8
		Continued HS	11	535	2.1	4.4	11.1	1.0	3.9
		Dropped Out	23	535	4.3	5.5	3.7	4.1	8.7
	1999	Graduated	529	609	86.9	81.6	81.1	88.6	75.7
		Received GED	28	609	4.6	1.9	2.7	5.4	6.1
		Continued HS	17	609	2.8	9.7	8.1	0.6	7.0
		Dropped Out	35	609	5.7	6.8	8.1	5.4	11.3
ANDREWS	2000	Graduated	223	235	94.9	-	90.7	98.3	92.5
		Received GED	3	235	1.3	-	1.9	0.8	2.5
		Continued HS	5	235	2.1	-	3.7	0.8	2.5
		Dropped Out	4	235	1.7	-	3.7	0.0	2.5
	1999	Graduated	200	228	87.7	-	81.0	91.4	72.0
		Received GED	11	228	4.8	-	3.6	5.8	12.0
		Continued HS	3	228	1.3	-	2.4	0.7	0.0
		Dropped Out	14	228	6.1	-	13.1	2.2	16.0
ANGELINA	2000	Graduated	876	1,059	82.7	82.2	71.3	84.6	74.8
		Received GED	31	1,059	2.9	2.2	1.5	3.5	4.3
		Continued HS	80	1,059	7.6	7.6	12.5	6.8	7.4
		Dropped Out	72	1,059	6.8	8.1	14.7	5.1	13.5
	1999	Graduated	923	1,093	84.4	81.4	76.1	86.7	74.4
		Received GED	23	1,093	2.1	0.5	2.2	2.6	1.7
		Continued HS	72	1,093	6.6	10.7	9.0	5.0	9.2
		Dropped Out	75	1,093	6.9	7.4	12.7	5.7	14.7
ARANSAS	2000	Graduated	238	271	87.8	100.0	80.0	90.6	84.3
		Received GED	10	271	3.7	0.0	4.0	4.1	2.9
		Continued HS	12	271	4.4	0.0	9.3	2.3	4.3
		Dropped Out	11	271	4.1	0.0	6.7	2.9	8.6
	1999	Graduated	203	250	81.2	-	69.1	85.1	76.9
		Received GED	14	250	5.6	-	7.3	5.4	3.1
		Continued HS	6	250	2.4	-	5.5	1.8	1.5
		Dropped Out	27	250	10.8	-	18.2	7.7	18.5
ARCHER	2000	Graduated	133	141	94.3	-	66.7	95.6	80.0
		Received GED	0	141	0.0	-	0.0	0.0	0.0
		Continued HS	1	141	0.7	-	0.0	0.7	0.0
		Dropped Out	7	141	5.0	-	33.3	3.7	20.0
	1999	Graduated	126	136	92.6	-	100.0	92.3	77.8
		Received GED	5	136	3.7	-	0.0	3.8	22.2
		Continued HS	1	136	0.7	-	0.0	0.8	0.0
		Dropped Out	4	136	2.9	-	0.0	3.1	0.0
ARMSTRONG	2000	Graduated	26	30	86.7	-	-	86.7	-
		Received GED	2	30	6.7	-	-	6.7	-
		Continued HS	1	30	3.3	-	-	3.3	-
		Dropped Out	1	30	3.3	-	-	3.3	-
	1999	Graduated	23	24	95.8	-	-	100.0	-
		Received GED	0	24	0.0	-	-	0.0	-
		Continued HS	0	24	0.0	-	-	0.0	-
		Dropped Out	1	24	4.2	-	-	0.0	-
ATASCOSA	2000	Graduated	382	464	82.3	-	81.5	84.6	80.6
		Received GED	17	464	3.7	-	3.5	4.0	2.8
		Continued HS	28	464	6.0	-	6.7	4.7	6.2
		Dropped Out	37	464	8.0	-	8.3	6.7	10.4
	1999	Graduated	463	553	83.7	100.0	78.5	91.2	77.6
		Received GED	11	553	2.0	0.0	2.2	1.9	2.5
		Continued HS	34	553	6.1	0.0	6.8	5.1	6.6
		Dropped Out	45	553	8.1	0.0	12.6	1.9	13.3
AUSTIN	2000	Graduated	338	381	88.7	89.1	69.4	91.9	80.0
		Received GED	10	381	2.6	2.2	0.0	3.2	1.7
		Continued HS	12	381	3.1	4.3	10.2	1.8	3.3
		Dropped Out	21	381	5.5	4.3	20.4	3.2	15.0

Note: A dash (-) indicates data are not reported to protect student anonymity.

Table 2. Longitudinal Dropout and Completion Rates, Grades 9-12, by Student Group, Classes of 1999 and 2000: County Listing

County	Class	Final Status	Number	Number in Cohort	Rate %				
					All Students	Afr. Am.	Hispanic	White	Econ. Dis.
AUSTIN	1999	Graduated	284	342	83.0	73.9	73.6	86.7	67.2
		Received GED	15	342	4.4	2.2	7.5	4.1	5.2
		Continued HS	16	342	4.7	13.0	3.8	3.3	8.6
		Dropped Out	27	342	7.9	10.9	15.1	5.8	19.0
BAILEY	2000	Graduated	106	116	91.4	-	81.8	98.5	80.5
		Received GED	1	116	0.9	-	0.0	1.5	0.0
		Continued HS	4	116	3.4	-	9.1	0.0	9.8
		Dropped Out	5	116	4.3	-	9.1	0.0	9.8
	1999	Graduated	74	82	90.2	-	81.6	97.6	84.8
		Received GED	2	82	2.4	-	2.6	2.4	3.0
		Continued HS	3	82	3.7	-	7.9	0.0	9.1
		Dropped Out	3	82	3.7	-	7.9	0.0	3.0
BANDERA	2000	Graduated	163	186	87.6	-	90.6	87.0	79.5
		Received GED	7	186	3.8	-	3.1	3.9	2.6
		Continued HS	6	186	3.2	-	0.0	3.9	2.6
		Dropped Out	10	186	5.4	-	6.3	5.2	15.4
	1999	Graduated	153	171	89.5	-	86.2	90.1	86.8
		Received GED	5	171	2.9	-	6.9	2.1	2.6
		Continued HS	11	171	6.4	-	3.4	7.0	5.3
		Dropped Out	2	171	1.2	-	3.4	0.7	5.3
BASTROP	2000	Graduated	490	609	80.5	71.6	71.2	85.1	65.6
		Received GED	20	609	3.3	1.5	0.8	4.5	1.3
		Continued HS	41	609	6.7	11.9	13.6	3.7	13.1
		Dropped Out	58	609	9.5	14.9	14.4	6.7	20.0
	1999	Graduated	515	663	77.7	71.2	66.1	83.4	68.5
		Received GED	24	663	3.6	2.7	2.3	4.3	2.2
		Continued HS	49	663	7.4	8.2	13.5	4.8	11.6
		Dropped Out	75	663	11.3	17.8	18.1	7.5	17.7
BAYLOR	2000	Graduated	35	38	92.1	-	-	94.1	80.0
		Received GED	1	38	2.6	-	-	2.9	0.0
		Continued HS	1	38	2.6	-	-	2.9	10.0
		Dropped Out	1	38	2.6	-	-	0.0	10.0
	1999	Graduated	43	45	95.6	-	-	97.6	92.3
		Received GED	0	45	0.0	-	-	0.0	0.0
		Continued HS	0	45	0.0	-	-	0.0	0.0
		Dropped Out	2	45	4.4	-	-	2.4	7.7
BEE	2000	Graduated	319	374	85.3	84.6	83.9	87.5	79.1
		Received GED	16	374	4.3	0.0	4.5	4.4	4.7
		Continued HS	29	374	7.8	15.4	7.6	7.4	11.5
		Dropped Out	10	374	2.7	0.0	4.0	0.7	4.7
	1999	Graduated	262	323	81.1	-	77.4	85.4	75.9
		Received GED	19	323	5.9	-	4.3	8.5	5.3
		Continued HS	32	323	9.9	-	14.0	4.6	14.3
		Dropped Out	10	323	3.1	-	4.3	1.5	4.5
BELL	2000	Graduated	2,405	2,919	82.4	78.7	76.2	86.0	69.9
		Received GED	180	2,919	6.2	3.9	7.1	7.2	8.7
		Continued HS	151	2,919	5.2	8.6	7.3	2.6	9.8
		Dropped Out	183	2,919	6.3	8.8	9.5	4.2	11.5
	1999	Graduated	2,255	2,786	80.9	72.9	78.4	85.4	67.8
		Received GED	156	2,786	5.6	5.1	4.8	6.2	7.6
		Continued HS	180	2,786	6.5	11.0	7.5	3.9	13.4
		Dropped Out	195	2,786	7.0	11.0	9.3	4.5	11.2
BEXAR	2000	Graduated	12,305	16,014	76.8	78.7	72.0	85.1	71.3
		Received GED	818	16,014	5.1	4.1	5.0	5.7	5.1
		Continued HS	1,394	16,014	8.7	8.8	11.0	4.5	11.3
		Dropped Out	1,497	16,014	9.3	8.5	12.0	4.8	12.3
	1999	Graduated	11,751	15,532	75.7	76.5	70.6	84.4	71.8
		Received GED	592	15,532	3.8	2.9	3.8	4.2	3.4
		Continued HS	1,585	15,532	10.2	10.9	12.5	6.0	11.5
		Dropped Out	1,604	15,532	10.3	9.7	13.1	5.4	13.2

Note: A dash (-) indicates data are not reported to protect student anonymity.

Table 2. Longitudinal Dropout and Completion Rates, Grades 9-12, by Student Group, Classes of 1999 and 2000: County Listing

County	Class	Final Status	Number	Number in Cohort	Rate %				
					All Students	Afr. Am.	Hispanic	White	Econ. Dis.
BLANCO	2000	Graduated	90	94	95.7	-	85.7	98.6	91.7
		Received GED	1	94	1.1	-	0.0	1.4	0.0
		Continued HS	1	94	1.1	-	4.8	0.0	0.0
		Dropped Out	2	94	2.1	-	9.5	0.0	8.3
	1999	Graduated	87	102	85.3	-	63.2	91.5	78.3
		Received GED	1	102	1.0	-	0.0	1.2	0.0
		Continued HS	8	102	7.8	-	21.1	3.7	13.0
		Dropped Out	6	102	5.9	-	15.8	3.7	8.7
BORDEN	2000	Graduated	23	24	95.8	-	-	95.0	-
		Received GED	1	24	4.2	-	-	5.0	-
		Continued HS	0	24	0.0	-	-	0.0	-
		Dropped Out	0	24	0.0	-	-	0.0	-
	1999	Graduated	14	14	100.0	-	-	100.0	-
		Received GED	0	14	0.0	-	-	0.0	-
		Continued HS	0	14	0.0	-	-	0.0	-
		Dropped Out	0	14	0.0	-	-	0.0	-
BOSQUE	2000	Graduated	208	239	87.0	81.8	71.4	90.2	78.8
		Received GED	13	239	5.4	9.1	0.0	6.2	5.9
		Continued HS	2	239	0.8	0.0	0.0	1.0	0.0
		Dropped Out	16	239	6.7	9.1	28.6	2.6	15.3
	1999	Graduated	189	209	90.4	85.7	91.2	90.5	89.1
		Received GED	6	209	2.9	0.0	0.0	3.6	3.1
		Continued HS	5	209	2.4	0.0	5.9	1.8	1.6
		Dropped Out	9	209	4.3	14.3	2.9	4.2	6.3
BOWIE	2000	Graduated	990	1,146	86.4	83.2	55.6	88.9	80.1
		Received GED	54	1,146	4.7	1.9	36.1	4.4	7.5
		Continued HS	35	1,146	3.1	6.1	0.0	2.0	3.9
		Dropped Out	67	1,146	5.8	8.7	8.3	4.7	8.5
	1999	Graduated	911	1,060	85.9	83.0	76.0	87.3	78.6
		Received GED	38	1,060	3.6	1.8	8.0	4.0	3.1
		Continued HS	35	1,060	3.3	5.7	0.0	2.6	5.1
		Dropped Out	76	1,060	7.2	9.5	16.0	6.1	13.2
BRAZORIA	2000	Graduated	2,421	2,842	85.2	87.4	78.7	86.8	74.3
		Received GED	195	2,842	6.9	5.0	7.8	6.9	10.6
		Continued HS	154	2,842	5.4	7.1	10.1	3.7	10.9
		Dropped Out	72	2,842	2.5	0.4	3.4	2.5	4.2
	1999	Graduated	2,186	2,656	82.3	83.4	76.5	83.7	72.2
		Received GED	177	2,656	6.7	3.2	4.8	7.8	7.8
		Continued HS	188	2,656	7.1	11.1	12.7	4.9	12.5
		Dropped Out	105	2,656	4.0	2.3	6.1	3.6	7.5
BRAZOS	2000	Graduated	1,059	1,280	82.7	77.0	65.7	88.6	69.0
		Received GED	73	1,280	5.7	2.6	7.3	6.0	6.9
		Continued HS	71	1,280	5.5	7.7	13.7	2.8	11.9
		Dropped Out	77	1,280	6.0	12.8	13.3	2.6	12.2
	1999	Graduated	967	1,212	79.8	66.2	69.1	86.8	65.4
		Received GED	53	1,212	4.4	2.4	5.7	4.6	4.1
		Continued HS	121	1,212	10.0	21.7	15.4	5.0	19.0
		Dropped Out	71	1,212	5.9	9.7	9.8	3.5	11.5
BREWSTER	2000	Graduated	89	91	97.8	-	97.7	97.8	97.9
		Received GED	0	91	0.0	-	0.0	0.0	0.0
		Continued HS	0	91	0.0	-	0.0	0.0	0.0
		Dropped Out	2	91	2.2	-	2.3	2.2	2.1
	1999	Graduated	95	115	82.6	-	80.0	86.0	69.0
		Received GED	5	115	4.3	-	3.1	6.0	3.4
		Continued HS	9	115	7.8	-	9.2	6.0	10.3
		Dropped Out	6	115	5.2	-	7.7	2.0	17.2
BRISCOE	2000	Graduated	15	15	100.0	-	-	100.0	100.0
		Received GED	0	15	0.0	-	-	0.0	0.0
		Continued HS	0	15	0.0	-	-	0.0	0.0
		Dropped Out	0	15	0.0	-	-	0.0	0.0

Note: A dash (-) indicates data are not reported to protect student anonymity.

Table 2. Longitudinal Dropout and Completion Rates, Grades 9-12, by Student Group, Classes of 1999 and 2000: County Listing

County	Class	Final Status	Number	Number in Cohort	Rate %				
					All Students	Afr. Am.	Hispanic	White	Econ. Dis.
BRISCOE	1999	Graduated	18	18	100.0	-	-	100.0	-
		Received GED	0	18	0.0	-	-	0.0	-
		Continued HS	0	18	0.0	-	-	0.0	-
		Dropped Out	0	18	0.0	-	-	0.0	-
BROOKS	2000	Graduated	92	131	70.2	-	68.9	88.9	77.3
		Received GED	0	131	0.0	-	0.0	0.0	0.0
		Continued HS	16	131	12.2	-	12.3	11.1	4.5
		Dropped Out	23	131	17.6	-	18.9	0.0	18.2
	1999	Graduated	87	109	79.8	-	79.0	87.5	81.6
		Received GED	3	109	2.8	-	3.0	0.0	2.0
		Continued HS	7	109	6.4	-	7.0	0.0	2.0
		Dropped Out	12	109	11.0	-	11.0	12.5	14.3
BROWN	2000	Graduated	442	522	84.7	81.0	85.2	84.5	78.6
		Received GED	20	522	3.8	4.8	1.1	4.4	5.8
		Continued HS	25	522	4.8	4.8	6.8	4.4	6.8
		Dropped Out	35	522	6.7	9.5	6.8	6.6	8.7
	1999	Graduated	422	495	85.3	73.3	82.6	87.1	84.2
		Received GED	14	495	2.8	0.0	5.8	2.6	1.8
		Continued HS	22	495	4.4	10.0	2.9	4.1	7.0
		Dropped Out	37	495	7.5	16.7	8.7	6.2	7.0
BURLESON	2000	Graduated	190	228	83.3	76.2	75.8	86.8	76.3
		Received GED	12	228	5.3	4.8	6.1	5.3	6.8
		Continued HS	8	228	3.5	4.8	6.1	2.6	3.4
		Dropped Out	18	228	7.9	14.3	12.1	5.3	13.6
	1999	Graduated	190	239	79.5	80.8	68.9	82.9	72.8
		Received GED	13	239	5.4	5.8	6.7	5.0	6.2
		Continued HS	7	239	2.9	1.9	0.0	4.3	1.2
		Dropped Out	29	239	12.1	11.5	24.4	7.9	19.8
BURNET	2000	Graduated	342	402	85.1	-	86.4	84.6	80.9
		Received GED	24	402	6.0	-	1.5	6.9	4.5
		Continued HS	18	402	4.5	-	10.6	3.3	9.0
		Dropped Out	18	402	4.5	-	1.5	5.1	5.6
	1999	Graduated	343	406	84.5	66.7	77.8	85.3	72.9
		Received GED	19	406	4.7	0.0	0.0	5.5	7.1
		Continued HS	19	406	4.7	16.7	8.9	4.0	9.4
		Dropped Out	25	406	6.2	16.7	13.3	5.2	10.6
CALDWELL	2000	Graduated	316	388	81.4	91.7	73.4	87.2	63.6
		Received GED	16	388	4.1	4.2	3.0	5.1	5.6
		Continued HS	23	388	5.9	4.2	8.3	4.1	13.1
		Dropped Out	33	388	8.5	0.0	15.4	3.6	17.8
	1999	Graduated	275	356	77.2	70.0	70.3	84.5	71.7
		Received GED	13	356	3.7	3.3	4.5	3.0	4.8
		Continued HS	33	356	9.3	10.0	13.5	5.4	9.0
		Dropped Out	35	356	9.8	16.7	11.6	7.1	14.5
CALHOUN	2000	Graduated	207	250	82.8	87.5	72.7	89.6	64.3
		Received GED	10	250	4.0	12.5	5.1	3.0	7.1
		Continued HS	24	250	9.6	0.0	19.2	3.0	17.9
		Dropped Out	9	250	3.6	0.0	3.0	4.4	10.7
	1999	Graduated	171	225	76.0	100.0	65.9	81.4	65.1
		Received GED	6	225	2.7	0.0	2.2	3.4	0.0
		Continued HS	20	225	8.9	0.0	12.1	6.8	9.3
		Dropped Out	28	225	12.4	0.0	19.8	8.5	25.6
CALLAHAN	2000	Graduated	182	204	89.2	-	88.9	89.2	86.4
		Received GED	11	204	5.4	-	0.0	5.9	6.8
		Continued HS	4	204	2.0	-	5.6	1.6	2.3
		Dropped Out	7	204	3.4	-	5.6	3.2	4.5
	1999	Graduated	203	227	89.4	-	81.3	90.0	82.9
		Received GED	8	227	3.5	-	0.0	3.8	2.9
		Continued HS	2	227	0.9	-	0.0	1.0	0.0
		Dropped Out	14	227	6.2	-	18.8	5.2	14.3

Note: A dash (-) indicates data are not reported to protect student anonymity.



Table 2. Longitudinal Dropout and Completion Rates, Grades 9-12, by Student Group, Classes of 1999 and 2000: County Listing

County	Class	Final Status	Number	Number in Cohort	Rate %				
					All Students	Afr. Am.	Hispanic	White	Econ. Dis.
CAMERON	2000	Graduated	3,795	4,903	77.4	66.7	76.4	86.0	76.3
		Received GED	174	4,903	3.5	25.0	3.4	4.6	3.4
		Continued HS	596	4,903	12.2	8.3	12.8	6.0	13.2
		Dropped Out	338	4,903	6.9	0.0	7.3	3.4	7.1
	1999	Graduated	3,905	5,147	75.9	64.3	74.7	88.4	74.4
		Received GED	177	5,147	3.4	14.3	3.4	4.0	3.2
		Continued HS	614	5,147	11.9	7.1	12.7	4.8	13.4
		Dropped Out	451	5,147	8.8	14.3	9.3	2.9	9.0
CAMP	2000	Graduated	109	126	86.5	80.6	69.2	91.5	77.5
		Received GED	13	126	10.3	16.1	7.7	8.5	15.0
		Continued HS	2	126	1.6	3.2	7.7	0.0	2.5
		Dropped Out	2	126	1.6	0.0	15.4	0.0	5.0
	1999	Graduated	125	151	82.8	84.2	-	83.5	74.4
		Received GED	7	151	4.6	2.6	-	4.6	5.1
		Continued HS	10	151	6.6	10.5	-	5.5	15.4
		Dropped Out	9	151	6.0	2.6	-	6.4	5.1
CARSON	2000	Graduated	103	105	98.1	-	100.0	98.0	100.0
		Received GED	1	105	1.0	-	0.0	1.0	0.0
		Continued HS	0	105	0.0	-	0.0	0.0	0.0
		Dropped Out	1	105	1.0	-	0.0	1.0	0.0
	1999	Graduated	125	128	97.7	-	90.9	98.3	91.7
		Received GED	2	128	1.6	-	9.1	0.9	4.2
		Continued HS	1	128	0.8	-	0.0	0.9	4.2
		Dropped Out	0	128	0.0	-	0.0	0.0	0.0
CASS	2000	Graduated	436	462	94.4	93.5	80.0	94.9	91.2
		Received GED	7	462	1.5	0.0	0.0	2.1	0.7
		Continued HS	9	462	1.9	4.0	20.0	0.9	2.7
		Dropped Out	10	462	2.2	2.4	0.0	2.1	5.4
	1999	Graduated	458	493	92.9	92.1	83.3	93.3	90.5
		Received GED	6	493	1.2	0.0	0.0	1.7	2.0
		Continued HS	6	493	1.2	1.6	0.0	1.1	1.4
		Dropped Out	23	493	4.7	6.3	16.7	3.9	6.1
CASTRO	2000	Graduated	117	123	95.1	100.0	91.7	100.0	91.5
		Received GED	1	123	0.8	0.0	1.4	0.0	1.7
		Continued HS	0	123	0.0	0.0	0.0	0.0	0.0
		Dropped Out	5	123	4.1	0.0	6.9	0.0	6.8
	1999	Graduated	148	175	84.6	77.8	79.4	93.8	83.9
		Received GED	4	175	2.3	0.0	3.9	0.0	1.1
		Continued HS	3	175	1.7	0.0	1.0	3.1	2.2
		Dropped Out	20	175	11.4	22.2	15.7	3.1	12.9
CHAMBERS	2000	Graduated	295	324	91.0	85.0	100.0	90.8	83.7
		Received GED	12	324	3.7	7.5	0.0	3.6	8.2
		Continued HS	10	324	3.1	0.0	0.0	4.0	6.1
		Dropped Out	7	324	2.2	7.5	0.0	1.6	2.0
	1999	Graduated	324	369	87.8	84.8	80.0	88.8	81.1
		Received GED	10	369	2.7	0.0	8.6	2.4	3.8
		Continued HS	11	369	3.0	0.0	2.9	3.4	1.9
		Dropped Out	24	369	6.5	15.2	8.6	5.4	13.2
CHEROKEE	2000	Graduated	446	497	89.7	88.0	87.5	90.5	89.7
		Received GED	16	497	3.2	0.9	2.1	4.1	1.9
		Continued HS	13	497	2.6	3.7	2.1	2.4	1.9
		Dropped Out	22	497	4.4	7.4	8.3	3.0	6.4
	1999	Graduated	429	496	86.5	87.4	67.4	88.8	78.3
		Received GED	24	496	4.8	4.2	4.3	5.2	7.2
		Continued HS	14	496	2.8	4.2	4.3	2.1	4.6
		Dropped Out	29	496	5.8	4.2	23.9	3.9	9.9
CHILDRESS	2000	Graduated	78	88	88.6	92.3	71.4	94.4	87.0
		Received GED	6	88	6.8	0.0	14.3	5.6	4.3
		Continued HS	2	88	2.3	7.7	4.8	0.0	0.0
		Dropped Out	2	88	2.3	0.0	9.5	0.0	8.7

Note: A dash (-) indicates data are not reported to protect student anonymity.

Table 2. Longitudinal Dropout and Completion Rates, Grades 9-12, by Student Group, Classes of 1999 and 2000: County Listing

County	Class	Final Status	Number	Number in Cohort	Rate %				
					All Students	Afr. Am.	Hispanic	White	Econ. Dis.
CHILDRESS	1999	Graduated	88	98	89.8	80.0	89.7	90.5	81.3
		Received GED	4	98	4.1	20.0	0.0	4.8	6.3
		Continued HS	0	98	0.0	0.0	0.0	0.0	0.0
		Dropped Out	6	98	6.1	0.0	10.3	4.8	12.5
CLAY	2000	Graduated	137	152	90.1	-	-	90.4	84.0
		Received GED	3	152	2.0	-	-	1.4	0.0
		Continued HS	3	152	2.0	-	-	2.1	4.0
		Dropped Out	9	152	5.9	-	-	6.2	12.0
	1999	Graduated	150	162	92.6	-	66.7	93.6	73.1
		Received GED	2	162	1.2	-	0.0	1.3	7.7
		Continued HS	2	162	1.2	-	16.7	0.6	7.7
		Dropped Out	8	162	4.9	-	16.7	4.5	11.5
COCHRAN	2000	Graduated	67	80	83.8	33.3	80.0	94.9	84.2
		Received GED	5	80	6.3	33.3	5.7	2.6	5.3
		Continued HS	5	80	6.3	33.3	8.6	0.0	5.3
		Dropped Out	3	80	3.8	0.0	5.7	2.6	5.3
	1999	Graduated	67	84	79.8	-	71.1	91.4	80.9
		Received GED	3	84	3.6	-	2.2	5.7	6.4
		Continued HS	4	84	4.8	-	6.7	0.0	6.4
		Dropped Out	10	84	11.9	-	20.0	2.9	6.4
COKE	2000	Graduated	54	131	41.2	0.0	32.3	62.0	25.4
		Received GED	57	131	43.5	61.5	51.6	32.4	47.6
		Continued HS	18	131	13.7	38.5	16.1	4.2	23.8
		Dropped Out	2	131	1.5	0.0	0.0	1.4	3.2
	1999	Graduated	62	90	68.9	28.6	70.4	73.2	53.5
		Received GED	7	90	7.8	14.3	14.8	3.6	7.0
		Continued HS	19	90	21.1	57.1	14.8	19.6	37.2
		Dropped Out	2	90	2.2	0.0	0.0	3.6	2.3
COLEMAN	2000	Graduated	105	121	86.8	85.7	100.0	85.1	75.6
		Received GED	4	121	3.3	0.0	0.0	4.0	6.7
		Continued HS	2	121	1.7	0.0	0.0	2.0	0.0
		Dropped Out	10	121	8.3	14.3	0.0	8.9	17.8
	1999	Graduated	143	154	92.9	-	96.3	91.9	90.7
		Received GED	0	154	0.0	-	0.0	0.0	0.0
		Continued HS	4	154	2.6	-	0.0	3.3	3.7
		Dropped Out	7	154	4.5	-	3.7	4.9	5.6
COLLIN	2000	Graduated	4,326	4,887	88.5	82.8	78.2	89.7	69.8
		Received GED	297	4,887	6.1	5.9	7.7	6.2	11.7
		Continued HS	155	4,887	3.2	5.9	8.4	2.5	7.5
		Dropped Out	109	4,887	2.2	5.5	5.7	1.6	11.0
	1999	Graduated	4,024	4,618	87.1	82.5	66.4	89.0	65.4
		Received GED	279	4,618	6.0	4.8	11.3	5.9	11.4
		Continued HS	184	4,618	4.0	7.4	13.5	2.9	11.4
		Dropped Out	131	4,618	2.8	5.2	8.9	2.1	11.8
COLLINGSWORTH	2000	Graduated	55	59	93.2	-	88.9	97.3	88.0
		Received GED	0	59	0.0	-	0.0	0.0	0.0
		Continued HS	1	59	1.7	-	0.0	2.7	0.0
		Dropped Out	3	59	5.1	-	11.1	0.0	12.0
	1999	Graduated	52	56	92.9	-	84.2	100.0	92.0
		Received GED	2	56	3.6	-	10.5	0.0	4.0
		Continued HS	0	56	0.0	-	0.0	0.0	0.0
		Dropped Out	2	56	3.6	-	5.3	0.0	4.0
COLORADO	2000	Graduated	243	278	87.4	80.4	71.7	94.4	73.6
		Received GED	9	278	3.2	2.2	5.7	2.2	4.2
		Continued HS	14	278	5.0	10.9	13.2	1.1	12.5
		Dropped Out	12	278	4.3	6.5	9.4	2.2	9.7
	1999	Graduated	273	302	90.4	84.7	77.8	95.7	82.7
		Received GED	5	302	1.7	4.2	2.2	0.5	2.7
		Continued HS	8	302	2.6	4.2	0.0	2.7	4.0
		Dropped Out	16	302	5.3	6.9	20.0	1.1	10.7

Note: A dash (-) indicates data are not reported to protect student anonymity.

Table 2. Longitudinal Dropout and Completion Rates, Grades 9-12, by Student Group, Classes of 1999 and 2000: County Listing

County	Class	Final Status	Number	Number in Cohort	Rate %				
					All Students	Afr. Am.	Hispanic	White	Econ. Dis.
COMAL	2000	Graduated	927	1,102	84.1	100.0	74.4	86.7	69.2
		Received GED	56	1,102	5.1	0.0	3.6	5.6	7.5
		Continued HS	69	1,102	6.3	0.0	13.2	4.3	10.7
		Dropped Out	50	1,102	4.5	0.0	8.8	3.3	12.6
	1999	Graduated	860	1,033	83.3	75.0	71.6	86.8	70.5
		Received GED	51	1,033	4.9	16.7	5.1	4.7	7.2
		Continued HS	73	1,033	7.1	8.3	12.7	5.4	10.8
		Dropped Out	49	1,033	4.7	0.0	10.6	3.1	11.5
COMANCHE	2000	Graduated	152	158	96.2	-	93.9	97.1	92.4
		Received GED	1	158	0.6	-	0.0	1.0	1.5
		Continued HS	2	158	1.3	-	2.0	1.0	1.5
		Dropped Out	3	158	1.9	-	4.1	1.0	4.5
	1999	Graduated	133	155	85.8	-	81.0	88.4	80.6
		Received GED	4	155	2.6	-	4.8	1.8	3.2
		Continued HS	6	155	3.9	-	2.4	3.6	6.5
		Dropped Out	12	155	7.7	-	11.9	6.3	9.7
CONCHO	2000	Graduated	47	51	92.2	-	95.7	89.3	93.8
		Received GED	1	51	2.0	-	4.3	0.0	0.0
		Continued HS	2	51	3.9	-	0.0	7.1	0.0
		Dropped Out	1	51	2.0	-	0.0	3.6	6.3
	1999	Graduated	44	47	93.6	-	93.8	93.3	95.0
		Received GED	2	47	4.3	-	0.0	6.7	0.0
		Continued HS	0	47	0.0	-	0.0	0.0	0.0
		Dropped Out	1	47	2.1	-	6.3	0.0	5.0
COOKE	2000	Graduated	321	377	85.1	88.2	58.3	87.2	69.6
		Received GED	35	377	9.3	0.0	20.8	8.9	17.9
		Continued HS	3	377	0.8	5.9	4.2	0.3	3.6
		Dropped Out	18	377	4.8	5.9	16.7	3.7	8.9
	1999	Graduated	331	383	86.4	81.8	53.3	89.3	66.7
		Received GED	18	383	4.7	0.0	13.3	4.2	3.9
		Continued HS	13	383	3.4	9.1	13.3	2.4	9.8
		Dropped Out	21	383	5.5	9.1	20.0	4.2	19.6
CORYELL	2000	Graduated	550	671	82.0	78.4	81.8	83.8	68.9
		Received GED	35	671	5.2	2.4	3.9	5.9	6.7
		Continued HS	42	671	6.3	8.0	5.2	5.0	9.2
		Dropped Out	44	671	6.6	11.2	9.1	5.3	15.1
	1999	Graduated	574	685	83.8	81.7	77.3	85.7	79.5
		Received GED	28	685	4.1	2.4	1.3	4.6	4.5
		Continued HS	40	685	5.8	10.3	13.3	3.3	6.3
		Dropped Out	43	685	6.3	5.6	8.0	6.4	9.8
COTTLE	2000	Graduated	19	25	76.0	-	40.0	94.4	58.3
		Received GED	0	25	0.0	-	0.0	0.0	0.0
		Continued HS	2	25	8.0	-	20.0	0.0	16.7
		Dropped Out	4	25	16.0	-	40.0	5.6	25.0
	1999	Graduated	25	29	86.2	-	87.5	82.4	81.3
		Received GED	1	29	3.4	-	0.0	5.9	0.0
		Continued HS	0	29	0.0	-	0.0	0.0	0.0
		Dropped Out	3	29	10.3	-	12.5	11.8	18.8
CRANE	2000	Graduated	74	84	88.1	-	84.0	93.5	84.6
		Received GED	3	84	3.6	-	4.0	3.2	3.8
		Continued HS	3	84	3.6	-	6.0	0.0	3.8
		Dropped Out	4	84	4.8	-	6.0	3.2	7.7
	1999	Graduated	68	75	90.7	-	90.3	90.2	77.8
		Received GED	0	75	0.0	-	0.0	0.0	0.0
		Continued HS	3	75	4.0	-	3.2	4.9	11.1
		Dropped Out	4	75	5.3	-	6.5	4.9	11.1
CROCKETT	2000	Graduated	85	88	96.6	-	97.9	97.4	90.9
		Received GED	1	88	1.1	-	2.1	0.0	4.5
		Continued HS	2	88	2.3	-	0.0	2.6	4.5
		Dropped Out	0	88	0.0	-	0.0	0.0	0.0

Note: A dash (-) indicates data are not reported to protect student anonymity.

Table 2. Longitudinal Dropout and Completion Rates, Grades 9-12, by Student Group, Classes of 1999 and 2000: County Listing

County	Class	Final Status	Number	Number in Cohort	Rate %				
					All Students	Afr. Am.	Hispanic	White	Econ. Dis.
CROCKETT	1999	Graduated	57	61	93.4	-	91.4	96.2	85.0
		Received GED	0	61	0.0	-	0.0	0.0	0.0
		Continued HS	0	61	0.0	-	0.0	0.0	0.0
		Dropped Out	4	61	6.6	-	8.6	3.8	15.0
CROSBY	2000	Graduated	97	115	84.3	83.3	81.9	88.9	82.9
		Received GED	0	115	0.0	0.0	0.0	0.0	0.0
		Continued HS	6	115	5.2	0.0	8.3	0.0	6.6
		Dropped Out	12	115	10.4	16.7	9.7	11.1	10.5
	1999	Graduated	100	119	84.0	62.5	82.6	90.5	78.3
		Received GED	3	119	2.5	0.0	0.0	7.1	3.3
		Continued HS	4	119	3.4	0.0	4.3	2.4	3.3
		Dropped Out	12	119	10.1	37.5	13.0	0.0	15.0
CULBERSON	2000	Graduated	43	48	89.6	-	88.1	100.0	90.2
		Received GED	1	48	2.1	-	2.4	0.0	2.4
		Continued HS	4	48	8.3	-	9.5	0.0	7.3
		Dropped Out	0	48	0.0	-	0.0	0.0	0.0
	1999	Graduated	54	56	96.4	-	95.8	100.0	95.2
		Received GED	0	56	0.0	-	0.0	0.0	0.0
		Continued HS	2	56	3.6	-	4.2	0.0	4.8
		Dropped Out	0	56	0.0	-	0.0	0.0	0.0
DALLAM	2000	Graduated	111	124	89.5	-	83.9	91.2	81.5
		Received GED	5	124	4.0	-	0.0	5.5	7.4
		Continued HS	0	124	0.0	-	0.0	0.0	0.0
		Dropped Out	8	124	6.5	-	16.1	3.3	11.1
	1999	Graduated	106	120	88.3	-	76.0	91.4	76.0
		Received GED	3	120	2.5	-	0.0	3.2	0.0
		Continued HS	1	120	0.8	-	4.0	0.0	4.0
		Dropped Out	10	120	8.3	-	20.0	5.4	20.0
DALLAS	2000	Graduated	16,436	20,719	79.3	78.6	69.0	85.4	72.4
		Received GED	1,018	20,719	4.9	3.2	4.4	6.5	4.0
		Continued HS	1,847	20,719	8.9	10.6	14.6	4.3	12.2
		Dropped Out	1,418	20,719	6.8	7.5	11.9	3.7	11.4
	1999	Graduated	15,936	20,221	78.8	78.9	65.9	85.2	70.7
		Received GED	876	20,221	4.3	2.8	3.8	5.8	3.6
		Continued HS	1,878	20,221	9.3	10.4	17.0	4.4	13.0
		Dropped Out	1,531	20,221	7.6	7.8	13.3	4.6	12.7
DAWSON	2000	Graduated	180	225	80.0	50.0	71.9	92.0	73.2
		Received GED	18	225	8.0	10.0	10.5	5.0	12.7
		Continued HS	10	225	4.4	20.0	4.4	3.0	2.8
		Dropped Out	17	225	7.6	20.0	13.2	0.0	11.3
	1999	Graduated	160	210	76.2	70.0	66.1	92.4	70.0
		Received GED	12	210	5.7	20.0	6.6	2.5	5.7
		Continued HS	22	210	10.5	10.0	14.9	3.8	15.7
		Dropped Out	16	210	7.6	0.0	12.4	1.3	8.6
DEAF SMITH	2000	Graduated	248	292	84.9	100.0	80.1	93.6	81.9
		Received GED	14	292	4.8	0.0	7.3	0.0	4.3
		Continued HS	10	292	3.4	0.0	4.2	2.1	6.4
		Dropped Out	20	292	6.8	0.0	8.4	4.3	7.4
	1999	Graduated	246	314	78.3	100.0	69.5	94.2	66.7
		Received GED	11	314	3.5	0.0	5.4	0.0	2.9
		Continued HS	16	314	5.1	0.0	7.4	1.0	9.8
		Dropped Out	41	314	13.1	0.0	17.7	4.9	20.6
DELTA	2000	Graduated	77	88	87.5	88.2	-	88.1	77.8
		Received GED	3	88	3.4	0.0	-	4.5	3.7
		Continued HS	1	88	1.1	5.9	-	0.0	0.0
		Dropped Out	7	88	8.0	5.9	-	7.5	18.5
	1999	Graduated	74	87	85.1	72.7	-	86.7	86.7
		Received GED	2	87	2.3	0.0	-	2.7	0.0
		Continued HS	4	87	4.6	9.1	-	4.0	6.7
		Dropped Out	7	87	8.0	18.2	-	6.7	6.7

Note: A dash (-) indicates data are not reported to protect student anonymity.

Table 2. Longitudinal Dropout and Completion Rates, Grades 9-12, by Student Group, Classes of 1999 and 2000: County Listing

County	Class	Final Status	Number	Number in Cohort	Rate %				
					All Students	Afr. Am.	Hispanic	White	Econ. Dis.
DENTON	2000	Graduated	3,254	3,745	86.9	84.2	74.9	88.3	68.5
		Received GED	209	3,745	5.6	4.5	5.5	5.7	9.7
		Continued HS	154	3,745	4.1	5.7	11.1	3.2	13.1
		Dropped Out	128	3,745	3.4	5.7	8.5	2.8	8.6
	1999	Graduated	3,054	3,544	86.2	80.1	73.2	87.8	65.6
		Received GED	157	3,544	4.4	5.1	3.8	4.5	10.3
		Continued HS	180	3,544	5.1	11.7	11.8	4.0	10.7
		Dropped Out	153	3,544	4.3	3.1	11.2	3.7	13.4
DEWITT	2000	Graduated	304	336	90.5	87.5	85.9	92.9	86.7
		Received GED	14	336	4.2	5.0	7.1	2.8	4.8
		Continued HS	7	336	2.1	2.5	3.5	1.4	3.6
		Dropped Out	11	336	3.3	5.0	3.5	2.8	4.8
	1999	Graduated	267	309	86.4	65.4	81.9	90.5	70.7
		Received GED	10	309	3.2	0.0	4.2	3.3	4.0
		Continued HS	13	309	4.2	15.4	6.9	1.9	13.3
		Dropped Out	19	309	6.1	19.2	6.9	4.3	12.0
DICKENS	2000	Graduated	26	32	81.3	-	66.7	90.0	64.7
		Received GED	5	32	15.6	-	33.3	10.0	29.4
		Continued HS	0	32	0.0	-	0.0	0.0	0.0
		Dropped Out	1	32	3.1	-	0.0	0.0	5.9
	1999	Graduated	39	45	86.7	-	73.3	93.3	76.2
		Received GED	1	45	2.2	-	0.0	3.3	0.0
		Continued HS	1	45	2.2	-	6.7	0.0	4.8
		Dropped Out	4	45	8.9	-	20.0	3.3	19.0
DIMMIT	2000	Graduated	138	177	78.0	-	75.8	90.0	79.7
		Received GED	10	177	5.6	-	5.2	10.0	4.1
		Continued HS	5	177	2.8	-	3.3	0.0	0.0
		Dropped Out	24	177	13.6	-	15.7	0.0	16.3
	1999	Graduated	124	163	76.1	-	73.4	90.5	73.0
		Received GED	7	163	4.3	-	4.3	4.8	5.2
		Continued HS	7	163	4.3	-	5.0	0.0	5.2
		Dropped Out	25	163	15.3	-	17.3	4.8	16.5
DONLEY	2000	Graduated	45	49	91.8	-	83.3	92.5	83.3
		Received GED	0	49	0.0	-	0.0	0.0	0.0
		Continued HS	1	49	2.0	-	0.0	2.5	0.0
		Dropped Out	3	49	6.1	-	16.7	5.0	16.7
	1999	Graduated	49	60	81.7	60.0	66.7	85.1	81.3
		Received GED	2	60	3.3	0.0	0.0	4.3	0.0
		Continued HS	3	60	5.0	0.0	16.7	4.3	6.3
		Dropped Out	6	60	10.0	40.0	16.7	6.4	12.5
DUVAL	2000	Graduated	184	201	91.5	-	92.4	81.3	91.3
		Received GED	1	201	0.5	-	0.5	0.0	0.0
		Continued HS	5	201	2.5	-	1.6	12.5	2.7
		Dropped Out	11	201	5.5	-	5.4	6.3	6.0
	1999	Graduated	186	220	84.5	-	85.2	76.5	82.1
		Received GED	5	220	2.3	-	2.0	5.9	2.1
		Continued HS	4	220	1.8	-	1.0	11.8	1.4
		Dropped Out	25	220	11.4	-	11.8	5.9	14.3
EASTLAND	2000	Graduated	213	252	84.5	-	85.3	85.0	75.4
		Received GED	16	252	6.3	-	2.9	6.1	10.8
		Continued HS	13	252	5.2	-	5.9	5.2	10.8
		Dropped Out	10	252	4.0	-	5.9	3.8	3.1
	1999	Graduated	189	232	81.5	-	71.4	83.3	63.3
		Received GED	16	232	6.9	-	3.6	7.1	11.7
		Continued HS	12	232	5.2	-	10.7	4.0	10.0
		Dropped Out	15	232	6.5	-	14.3	5.6	15.0
ECTOR	2000	Graduated	1,385	1,830	75.7	78.4	70.1	81.1	66.6
		Received GED	50	1,830	2.7	0.0	2.3	3.5	2.2
		Continued HS	144	1,830	7.9	5.4	10.7	5.1	10.1
		Dropped Out	251	1,830	13.7	16.2	16.9	10.3	21.0

Note: A dash (-) indicates data are not reported to protect student anonymity.

Table 2. Longitudinal Dropout and Completion Rates, Grades 9-12, by Student Group, Classes of 1999 and 2000: County Listing

County	Class	Final Status	Number	Number in Cohort	Rate %				
					All Students	Afr. Am.	Hispanic	White	Econ. Dis.
ECTOR	1999	Graduated	1,366	1,857	73.6	57.3	65.7	81.7	54.6
		Received GED	39	1,857	2.1	0.0	1.0	3.3	1.9
		Continued HS	138	1,857	7.4	14.6	9.3	5.1	10.8
		Dropped Out	314	1,857	16.9	28.1	24.0	9.9	32.7
EDWARDS	2000	Graduated	55	64	85.9	-	88.9	82.1	80.5
		Received GED	3	64	4.7	-	0.0	10.7	7.3
		Continued HS	0	64	0.0	-	0.0	0.0	0.0
		Dropped Out	6	64	9.4	-	11.1	7.1	12.2
	1999	Graduated	68	71	95.8	-	97.1	94.4	95.7
		Received GED	2	71	2.8	-	0.0	5.6	2.2
		Continued HS	1	71	1.4	-	2.9	0.0	2.2
		Dropped Out	0	71	0.0	-	0.0	0.0	0.0
EL PASO	2000	Graduated	7,440	9,964	74.7	78.4	73.1	83.1	73.9
		Received GED	382	9,964	3.8	3.5	3.6	5.4	3.3
		Continued HS	1,311	9,964	13.2	10.3	14.4	6.4	14.5
		Dropped Out	831	9,964	8.3	7.8	8.9	5.1	8.4
	1999	Graduated	7,315	9,702	75.4	81.1	73.7	82.9	75.6
		Received GED	289	9,702	3.0	1.4	3.0	3.6	2.6
		Continued HS	1,357	9,702	14.0	11.6	15.0	8.8	14.7
		Dropped Out	741	9,702	7.6	6.0	8.3	4.7	7.1
ELLIS	2000	Graduated	1,386	1,544	89.8	88.1	86.3	90.9	84.0
		Received GED	66	1,544	4.3	3.0	4.6	4.4	4.5
		Continued HS	39	1,544	2.5	5.4	3.1	1.9	2.5
		Dropped Out	53	1,544	3.4	3.6	6.1	2.8	9.0
	1999	Graduated	1,262	1,416	89.1	93.2	79.2	90.9	87.8
		Received GED	43	1,416	3.0	2.0	4.0	2.9	2.7
		Continued HS	42	1,416	3.0	4.1	6.2	2.0	3.2
		Dropped Out	69	1,416	4.9	0.7	10.6	4.2	6.3
ERATH	2000	Graduated	288	333	86.5	-	74.6	89.0	70.3
		Received GED	15	333	4.5	-	1.7	5.1	5.4
		Continued HS	14	333	4.2	-	11.9	2.6	12.2
		Dropped Out	16	333	4.8	-	11.9	3.3	12.2
	1999	Graduated	287	333	86.2	-	73.0	87.7	71.4
		Received GED	18	333	5.4	-	2.7	5.8	5.4
		Continued HS	12	333	3.6	-	16.2	2.1	7.1
		Dropped Out	16	333	4.8	-	8.1	4.5	16.1
FALLS	2000	Graduated	180	217	82.9	86.6	77.1	82.0	81.6
		Received GED	11	217	5.1	0.0	2.9	10.0	1.0
		Continued HS	15	217	6.9	6.1	11.4	6.0	9.2
		Dropped Out	11	217	5.1	7.3	8.6	2.0	8.2
	1999	Graduated	164	202	81.2	74.7	79.3	87.2	75.6
		Received GED	12	202	5.9	5.1	10.3	5.3	7.0
		Continued HS	12	202	5.9	12.7	3.4	1.1	9.3
		Dropped Out	14	202	6.9	7.6	6.9	6.4	8.1
FANNIN	2000	Graduated	301	335	89.9	78.9	76.5	91.2	81.0
		Received GED	12	335	3.6	0.0	0.0	4.1	1.6
		Continued HS	6	335	1.8	15.8	5.9	0.7	6.3
		Dropped Out	16	335	4.8	5.3	17.6	4.1	11.1
	1999	Graduated	307	346	88.7	89.5	69.2	89.5	76.5
		Received GED	8	346	2.3	0.0	7.7	2.2	6.2
		Continued HS	11	346	3.2	5.3	23.1	2.2	7.4
		Dropped Out	20	346	5.8	5.3	0.0	6.1	9.9
FAYETTE	2000	Graduated	241	272	88.6	81.8	71.4	91.4	75.5
		Received GED	11	272	4.0	9.1	7.1	3.2	4.1
		Continued HS	8	272	2.9	4.5	10.7	1.8	10.2
		Dropped Out	12	272	4.4	4.5	10.7	3.6	10.2
	1999	Graduated	227	259	87.6	90.9	72.0	89.2	69.8
		Received GED	8	259	3.1	0.0	0.0	3.8	0.0
		Continued HS	6	259	2.3	0.0	0.0	2.8	2.3
		Dropped Out	18	259	6.9	9.1	28.0	4.2	27.9

Note: A dash (-) indicates data are not reported to protect student anonymity.

Table 2. Longitudinal Dropout and Completion Rates, Grades 9-12, by Student Group, Classes of 1999 and 2000: County Listing

County	Class	Final Status	Number	Number in Cohort	Rate %				
					All Students	Afr. Am.	Hispanic	White	Econ. Dis.
FISHER	2000	Graduated	65	67	97.0	-	100.0	95.1	96.3
		Received GED	1	67	1.5	-	0.0	2.4	0.0
		Continued HS	0	67	0.0	-	0.0	0.0	0.0
		Dropped Out	1	67	1.5	-	0.0	2.4	3.7
	1999	Graduated	58	59	98.3	-	93.8	100.0	94.1
		Received GED	0	59	0.0	-	0.0	0.0	0.0
		Continued HS	1	59	1.7	-	6.3	0.0	5.9
		Dropped Out	0	59	0.0	-	0.0	0.0	0.0
FLOYD	2000	Graduated	108	135	80.0	-	65.8	96.6	62.5
		Received GED	0	135	0.0	-	0.0	0.0	0.0
		Continued HS	5	135	3.7	-	4.1	3.4	4.2
		Dropped Out	22	135	16.3	-	30.1	0.0	33.3
	1999	Graduated	113	140	80.7	100.0	69.3	93.2	65.4
		Received GED	1	140	0.7	0.0	0.0	1.7	0.0
		Continued HS	5	140	3.6	0.0	6.7	0.0	5.8
		Dropped Out	21	140	15.0	0.0	24.0	5.1	28.8
FOARD	2000	Graduated	11	11	100.0	-	-	100.0	100.0
		Received GED	0	11	0.0	-	-	0.0	0.0
		Continued HS	0	11	0.0	-	-	0.0	0.0
		Dropped Out	0	11	0.0	-	-	0.0	0.0
	1999	Graduated	25	25	100.0	-	100.0	100.0	100.0
		Received GED	0	25	0.0	-	0.0	0.0	0.0
		Continued HS	0	25	0.0	-	0.0	0.0	0.0
		Dropped Out	0	25	0.0	-	0.0	0.0	0.0
FORT BEND	2000	Graduated	4,141	4,779	86.6	87.4	74.0	90.0	72.4
		Received GED	205	4,779	4.3	2.5	6.5	5.1	7.3
		Continued HS	231	4,779	4.8	6.4	9.5	2.4	9.1
		Dropped Out	202	4,779	4.2	3.7	10.0	2.5	11.3
	1999	Graduated	3,779	4,507	83.8	80.1	69.5	89.6	70.1
		Received GED	174	4,507	3.9	3.2	6.0	4.1	5.8
		Continued HS	302	4,507	6.7	9.6	11.7	3.5	11.4
		Dropped Out	252	4,507	5.6	7.1	12.8	2.8	12.7
FRANKLIN	2000	Graduated	97	103	94.2	100.0	-	95.7	88.9
		Received GED	2	103	1.9	0.0	-	2.2	0.0
		Continued HS	0	103	0.0	0.0	-	0.0	0.0
		Dropped Out	4	103	3.9	0.0	-	2.2	11.1
	1999	Graduated	106	115	92.2	91.7	100.0	91.6	83.3
		Received GED	3	115	2.6	0.0	0.0	3.2	0.0
		Continued HS	1	115	0.9	0.0	0.0	1.1	0.0
		Dropped Out	5	115	4.3	8.3	0.0	4.2	16.7
FREESTONE	2000	Graduated	184	211	87.2	97.8	47.1	88.4	88.4
		Received GED	8	211	3.8	0.0	0.0	5.5	2.3
		Continued HS	5	211	2.4	0.0	17.6	1.4	4.7
		Dropped Out	14	211	6.6	2.2	35.3	4.8	4.7
	1999	Graduated	186	212	87.7	80.0	75.0	90.4	75.6
		Received GED	8	212	3.8	2.5	0.0	4.5	2.4
		Continued HS	6	212	2.8	5.0	8.3	1.9	4.9
		Dropped Out	12	212	5.7	12.5	16.7	3.2	17.1
FRIO	2000	Graduated	180	204	88.2	-	86.0	100.0	88.5
		Received GED	7	204	3.4	-	4.1	0.0	3.8
		Continued HS	9	204	4.4	-	5.2	0.0	3.8
		Dropped Out	8	204	3.9	-	4.7	0.0	3.8
	1999	Graduated	156	189	82.5	-	79.0	100.0	80.5
		Received GED	3	189	1.6	-	1.9	0.0	1.8
		Continued HS	10	189	5.3	-	6.4	0.0	6.2
		Dropped Out	20	189	10.6	-	12.7	0.0	11.5
GAINES	2000	Graduated	169	193	87.6	100.0	80.9	92.6	75.0
		Received GED	4	193	2.1	0.0	2.2	2.1	4.7
		Continued HS	14	193	7.3	0.0	11.2	4.2	15.6
		Dropped Out	6	193	3.1	0.0	5.6	1.1	4.7

Note: A dash (-) indicates data are not reported to protect student anonymity.

Table 2. Longitudinal Dropout and Completion Rates, Grades 9-12, by Student Group, Classes of 1999 and 2000: County Listing

County	Class	Final Status	Number	Number in Cohort	Rate %				
					All Students	Afr. Am.	Hispanic	White	Econ. Dis.
GAINES	1999	Graduated	197	212	92.9	100.0	89.9	94.4	92.4
		Received GED	3	212	1.4	0.0	0.0	2.4	2.5
		Continued HS	5	212	2.4	0.0	3.8	1.6	1.3
		Dropped Out	7	212	3.3	0.0	6.3	1.6	3.8
GALVESTON	2000	Graduated	3,416	4,081	83.7	84.5	75.9	84.2	71.6
		Received GED	232	4,081	5.7	2.6	5.9	6.8	6.9
		Continued HS	238	4,081	5.8	6.3	10.6	4.9	12.4
		Dropped Out	195	4,081	4.8	6.6	7.6	4.1	9.2
	1999	Graduated	3,184	3,920	81.2	77.1	69.0	84.3	66.6
		Received GED	186	3,920	4.7	2.8	3.6	5.7	4.9
		Continued HS	314	3,920	8.0	12.4	15.1	5.5	16.2
		Dropped Out	236	3,920	6.0	7.6	12.2	4.5	12.2
GARZA	2000	Graduated	50	63	79.4	42.9	77.8	86.8	77.8
		Received GED	8	63	12.7	28.6	11.1	10.5	16.7
		Continued HS	1	63	1.6	14.3	0.0	0.0	0.0
		Dropped Out	4	63	6.3	14.3	11.1	2.6	5.6
	1999	Graduated	89	90	98.9	100.0	97.1	100.0	97.4
		Received GED	0	90	0.0	0.0	0.0	0.0	0.0
		Continued HS	0	90	0.0	0.0	0.0	0.0	0.0
		Dropped Out	1	90	1.1	0.0	2.9	0.0	2.6
GILLESPIE	2000	Graduated	217	264	82.2	-	62.0	86.7	72.7
		Received GED	25	264	9.5	-	16.0	8.1	11.4
		Continued HS	10	264	3.8	-	6.0	3.3	6.8
		Dropped Out	12	264	4.5	-	16.0	1.9	9.1
	1999	Graduated	209	241	86.7	-	77.3	89.2	90.2
		Received GED	18	241	7.5	-	13.6	6.2	2.4
		Continued HS	5	241	2.1	-	2.3	2.1	0.0
		Dropped Out	9	241	3.7	-	6.8	2.6	7.3
GLASSCOCK	2000	Graduated	23	25	92.0	-	77.8	100.0	80.0
		Received GED	0	25	0.0	-	0.0	0.0	0.0
		Continued HS	1	25	4.0	-	11.1	0.0	10.0
		Dropped Out	1	25	4.0	-	11.1	0.0	10.0
	1999	Graduated	26	27	96.3	-	88.9	100.0	85.7
		Received GED	0	27	0.0	-	0.0	0.0	0.0
		Continued HS	1	27	3.7	-	11.1	0.0	14.3
		Dropped Out	0	27	0.0	-	0.0	0.0	0.0
GOLIAD	2000	Graduated	98	107	91.6	100.0	76.9	95.9	88.5
		Received GED	4	107	3.7	0.0	3.8	4.1	3.8
		Continued HS	0	107	0.0	0.0	0.0	0.0	0.0
		Dropped Out	5	107	4.7	0.0	19.2	0.0	7.7
	1999	Graduated	93	99	93.9	100.0	87.0	95.7	83.3
		Received GED	2	99	2.0	0.0	4.3	1.4	4.2
		Continued HS	1	99	1.0	0.0	0.0	1.4	4.2
		Dropped Out	3	99	3.0	0.0	8.7	1.4	8.3
GONZALES	2000	Graduated	209	278	75.2	81.3	64.8	84.3	67.3
		Received GED	15	278	5.4	0.0	4.8	7.4	8.2
		Continued HS	11	278	4.0	3.1	5.6	2.5	1.8
		Dropped Out	43	278	15.5	15.6	24.8	5.8	22.7
	1999	Graduated	174	217	80.2	42.1	79.6	88.0	76.7
		Received GED	9	217	4.1	10.5	3.1	4.0	4.4
		Continued HS	11	217	5.1	15.8	6.1	2.0	6.7
		Dropped Out	23	217	10.6	31.6	11.2	6.0	12.2
GRAY	2000	Graduated	259	291	89.0	92.3	86.4	89.5	75.0
		Received GED	12	291	4.1	0.0	2.3	4.4	9.7
		Continued HS	14	291	4.8	7.7	9.1	3.9	9.7
		Dropped Out	6	291	2.1	0.0	2.3	2.2	5.6
	1999	Graduated	284	319	89.0	94.1	81.4	89.6	77.9
		Received GED	14	319	4.4	0.0	7.0	4.4	5.9
		Continued HS	15	319	4.7	5.9	7.0	4.4	13.2
		Dropped Out	6	319	1.9	0.0	4.7	1.6	2.9

Note: A dash (-) indicates data are not reported to protect student anonymity.



Table 2. Longitudinal Dropout and Completion Rates, Grades 9-12, by Student Group, Classes of 1999 and 2000: County Listing

County	Class	Final Status	Number	Number in Cohort	Rate %				
					All Students	Afr. Am.	Hispanic	White	Econ. Dis.
GRAYSON	2000	Graduated	1,185	1,407	84.2	80.9	77.2	85.3	76.6
		Received GED	82	1,407	5.8	3.6	5.3	6.0	5.4
		Continued HS	45	1,407	3.2	3.6	7.0	2.7	5.9
		Dropped Out	95	1,407	6.8	11.8	10.5	6.0	12.2
	1999	Graduated	1,145	1,346	85.1	75.7	76.8	86.6	66.7
		Received GED	47	1,346	3.5	0.0	3.6	3.8	4.5
		Continued HS	53	1,346	3.9	5.4	5.4	3.4	9.5
		Dropped Out	101	1,346	7.5	18.9	14.3	6.2	19.4
GREGG	2000	Graduated	1,254	1,636	76.7	69.3	66.0	80.1	61.5
		Received GED	125	1,636	7.6	3.8	10.3	8.8	8.1
		Continued HS	119	1,636	7.3	11.3	11.3	5.5	12.9
		Dropped Out	138	1,636	8.4	15.6	12.4	5.6	17.5
	1999	Graduated	1,283	1,616	79.4	75.3	65.0	81.5	65.4
		Received GED	82	1,616	5.1	1.9	3.8	6.3	3.7
		Continued HS	101	1,616	6.3	9.5	16.3	4.5	13.1
		Dropped Out	150	1,616	9.3	13.3	15.0	7.7	17.8
GRIMES	2000	Graduated	233	301	77.4	70.6	76.2	80.6	70.2
		Received GED	24	301	8.0	2.9	14.3	7.6	3.8
		Continued HS	16	301	5.3	7.4	0.0	6.5	7.7
		Dropped Out	28	301	9.3	19.1	9.5	5.3	18.3
	1999	Graduated	212	274	77.4	71.2	54.7	88.4	75.7
		Received GED	17	274	6.2	4.1	9.4	6.2	3.9
		Continued HS	19	274	6.9	11.0	17.0	1.4	7.8
		Dropped Out	26	274	9.5	13.7	18.9	4.1	12.6
GUADALUPE	2000	Graduated	956	1,166	82.0	79.7	72.5	87.8	69.5
		Received GED	60	1,166	5.1	6.8	6.8	4.1	9.1
		Continued HS	73	1,166	6.3	8.1	10.1	3.9	9.1
		Dropped Out	77	1,166	6.6	5.4	10.6	4.2	12.3
	1999	Graduated	854	1,026	83.2	84.9	69.0	90.5	68.3
		Received GED	41	1,026	4.0	2.7	6.6	2.8	6.9
		Continued HS	56	1,026	5.5	2.7	8.1	4.5	5.4
		Dropped Out	75	1,026	7.3	9.6	16.4	2.2	19.3
HALE	2000	Graduated	436	574	76.0	74.3	67.1	89.0	59.8
		Received GED	22	574	3.8	0.0	4.4	3.7	8.2
		Continued HS	54	574	9.4	8.6	12.3	5.0	9.8
		Dropped Out	62	574	10.8	17.1	16.1	2.3	22.1
	1999	Graduated	447	566	79.0	78.3	70.7	90.7	74.4
		Received GED	18	566	3.2	0.0	4.4	1.8	5.0
		Continued HS	44	566	7.8	4.3	11.4	3.1	7.8
		Dropped Out	57	566	10.1	17.4	13.6	4.4	12.8
HALL	2000	Graduated	63	67	94.0	100.0	89.7	96.9	91.7
		Received GED	4	67	6.0	0.0	10.3	3.1	8.3
		Continued HS	0	67	0.0	0.0	0.0	0.0	0.0
		Dropped Out	0	67	0.0	0.0	0.0	0.0	0.0
	1999	Graduated	46	55	83.6	100.0	91.7	73.1	86.7
		Received GED	2	55	3.6	0.0	0.0	7.7	3.3
		Continued HS	1	55	1.8	0.0	0.0	3.8	3.3
		Dropped Out	6	55	10.9	0.0	8.3	15.4	6.7
HAMILTON	2000	Graduated	107	117	91.5	-	80.0	92.5	84.4
		Received GED	5	117	4.3	-	10.0	3.7	6.3
		Continued HS	1	117	0.9	-	0.0	0.9	3.1
		Dropped Out	4	117	3.4	-	10.0	2.8	6.3
	1999	Graduated	88	101	87.1	-	66.7	89.9	87.9
		Received GED	3	101	3.0	-	0.0	3.4	6.1
		Continued HS	2	101	2.0	-	0.0	2.2	0.0
		Dropped Out	8	101	7.9	-	33.3	4.5	6.1
HANSFORD	2000	Graduated	76	84	90.5	-	85.7	92.1	90.0
		Received GED	6	84	7.1	-	4.8	7.9	10.0
		Continued HS	1	84	1.2	-	4.8	0.0	0.0
		Dropped Out	1	84	1.2	-	4.8	0.0	0.0

Note: A dash (-) indicates data are not reported to protect student anonymity.

Table 2. Longitudinal Dropout and Completion Rates, Grades 9-12, by Student Group, Classes of 1999 and 2000: County Listing

County	Class	Final Status	Number	Number in Cohort	Rate %				
					All Students	Afr. Am.	Hispanic	White	Econ. Dis.
HANSFORD	1999	Graduated	86	98	87.8	-	77.8	91.5	73.9
		Received GED	4	98	4.1	-	11.1	1.4	13.0
		Continued HS	2	98	2.0	-	3.7	1.4	4.3
		Dropped Out	6	98	6.1	-	7.4	5.6	8.7
HARDEMAN	2000	Graduated	70	75	93.3	-	93.3	92.9	96.0
		Received GED	2	75	2.7	-	6.7	1.8	4.0
		Continued HS	0	75	0.0	-	0.0	0.0	0.0
		Dropped Out	3	75	4.0	-	0.0	5.4	0.0
	1999	Graduated	73	77	94.8	100.0	92.3	94.7	95.8
		Received GED	2	77	2.6	0.0	0.0	3.5	0.0
		Continued HS	1	77	1.3	0.0	7.7	0.0	0.0
		Dropped Out	1	77	1.3	0.0	0.0	1.8	4.2
HARDIN	2000	Graduated	662	753	87.9	85.1	85.7	88.4	79.7
		Received GED	25	753	3.3	2.7	0.0	3.5	5.5
		Continued HS	26	753	3.5	5.4	7.1	3.0	4.7
		Dropped Out	40	753	5.3	6.8	7.1	5.1	10.2
	1999	Graduated	722	810	89.1	80.7	88.9	90.2	81.8
		Received GED	19	810	2.3	0.0	5.6	2.6	1.5
		Continued HS	22	810	2.7	7.2	0.0	2.3	3.8
		Dropped Out	47	810	5.8	12.0	5.6	5.0	12.9
HARRIS	2000	Graduated	28,066	36,344	77.2	72.5	67.3	86.1	67.4
		Received GED	1,862	36,344	5.1	3.8	5.0	6.5	4.4
		Continued HS	3,371	36,344	9.3	11.8	14.7	4.0	15.3
		Dropped Out	3,045	36,344	8.4	11.9	13.1	3.4	12.8
	1999	Graduated	26,566	35,967	73.9	67.8	61.4	85.4	63.0
		Received GED	1,618	35,967	4.5	3.8	4.4	5.2	4.3
		Continued HS	3,669	35,967	10.2	12.6	15.8	4.8	16.9
		Dropped Out	4,114	35,967	11.4	15.7	18.4	4.5	15.8
HARRISON	2000	Graduated	739	891	82.9	80.1	63.6	85.1	80.8
		Received GED	46	891	5.2	1.2	9.1	6.5	4.7
		Continued HS	49	891	5.5	10.0	6.1	3.8	6.2
		Dropped Out	57	891	6.4	8.7	21.2	4.6	8.3
	1999	Graduated	735	877	83.8	61.4	50.0	80.2	82.1
		Received GED	32	877	3.6	2.4	0.0	7.1	3.4
		Continued HS	59	877	6.7	23.6	28.6	5.9	8.2
		Dropped Out	51	877	5.8	12.6	21.4	6.8	6.3
HARTLEY	2000	Graduated	23	24	95.8	-	-	95.7	100.0
		Received GED	1	24	4.2	-	-	4.3	0.0
		Continued HS	0	24	0.0	-	-	0.0	0.0
		Dropped Out	0	24	0.0	-	-	0.0	0.0
	1999	Graduated	18	19	94.7	-	-	94.7	100.0
		Received GED	0	19	0.0	-	-	0.0	0.0
		Continued HS	1	19	5.3	-	-	5.3	0.0
		Dropped Out	0	19	0.0	-	-	0.0	0.0
HASKELL	2000	Graduated	102	107	95.3	-	92.0	96.3	93.5
		Received GED	2	107	1.9	-	4.0	1.3	0.0
		Continued HS	0	107	0.0	-	0.0	0.0	0.0
		Dropped Out	3	107	2.8	-	4.0	2.5	6.5
	1999	Graduated	89	92	96.7	-	100.0	97.1	94.3
		Received GED	1	92	1.1	-	0.0	1.4	2.9
		Continued HS	1	92	1.1	-	0.0	0.0	2.9
		Dropped Out	1	92	1.1	-	0.0	1.4	0.0
HAYS	2000	Graduated	1,032	1,247	82.8	75.6	75.9	87.8	71.1
		Received GED	74	1,247	5.9	8.9	4.2	6.9	8.4
		Continued HS	67	1,247	5.4	11.1	8.5	2.9	7.5
		Dropped Out	74	1,247	5.9	4.4	11.4	2.4	13.0
	1999	Graduated	930	1,157	80.4	80.0	66.6	88.3	63.7
		Received GED	50	1,157	4.3	12.5	2.2	4.9	6.6
		Continued HS	95	1,157	8.2	5.0	16.6	3.7	9.3
		Dropped Out	82	1,157	7.1	2.5	14.6	3.1	20.4

Note: A dash (-) indicates data are not reported to protect student anonymity.

Table 2. Longitudinal Dropout and Completion Rates, Grades 9-12, by Student Group, Classes of 1999 and 2000: County Listing

County	Class	Final Status	Number	Number in Cohort	Rate %				
					All Students	Afr. Am.	Hispanic	White	Econ. Dis.
HEMPHILL	2000	Graduated	46	85	54.1	0.0	27.3	70.2	25.0
		Received GED	33	85	38.8	100.0	50.0	28.1	56.3
		Continued HS	2	85	2.4	0.0	9.1	0.0	6.3
		Dropped Out	4	85	4.7	0.0	13.6	1.8	12.5
	1999	Graduated	62	92	67.4	0.0	47.1	81.8	15.0
		Received GED	25	92	27.2	87.5	41.2	15.2	80.0
		Continued HS	2	92	2.2	12.5	5.9	0.0	5.0
		Dropped Out	3	92	3.3	0.0	5.9	3.0	0.0
HENDERSON	2000	Graduated	577	668	86.4	85.9	58.1	88.5	83.9
		Received GED	35	668	5.2	2.6	0.0	6.1	4.2
		Continued HS	14	668	2.1	3.8	9.3	1.3	4.2
		Dropped Out	42	668	6.3	7.7	32.6	4.1	7.6
	1999	Graduated	528	637	82.9	78.5	67.7	84.5	74.2
		Received GED	21	637	3.3	2.5	9.7	3.1	4.0
		Continued HS	32	637	5.0	6.3	12.9	4.2	4.0
		Dropped Out	56	637	8.8	12.7	9.7	8.2	17.7
HIDALGO	2000	Graduated	6,301	8,263	76.3	85.7	75.6	86.4	76.1
		Received GED	206	8,263	2.5	0.0	2.5	2.3	2.1
		Continued HS	1,008	8,263	12.2	7.1	12.5	7.6	12.6
		Dropped Out	748	8,263	9.1	7.1	9.4	3.7	9.3
	1999	Graduated	6,153	8,112	75.9	86.7	74.9	90.1	74.7
		Received GED	156	8,112	1.9	0.0	1.9	2.9	1.6
		Continued HS	1,015	8,112	12.5	13.3	13.0	4.0	13.4
		Dropped Out	788	8,112	9.7	0.0	10.2	2.9	10.2
HILL	2000	Graduated	312	349	89.4	91.9	78.7	90.9	84.1
		Received GED	14	349	4.0	0.0	4.3	4.6	6.3
		Continued HS	7	349	2.0	2.7	4.3	1.5	2.4
		Dropped Out	16	349	4.6	5.4	12.8	3.0	7.1
	1999	Graduated	301	355	84.8	78.0	75.0	87.3	77.9
		Received GED	11	355	3.1	0.0	4.5	3.4	5.3
		Continued HS	23	355	6.5	12.2	6.8	5.6	4.2
		Dropped Out	20	355	5.6	9.8	13.6	3.7	12.6
HOCKLEY	2000	Graduated	341	389	87.7	81.0	81.1	93.9	77.5
		Received GED	14	389	3.6	4.8	4.7	2.5	4.7
		Continued HS	19	389	4.9	4.8	7.7	2.5	10.9
		Dropped Out	15	389	3.9	9.5	6.5	1.0	7.0
	1999	Graduated	342	376	91.0	93.8	84.5	95.3	86.0
		Received GED	15	376	4.0	0.0	4.1	4.2	3.9
		Continued HS	10	376	2.7	6.3	5.4	0.5	4.7
		Dropped Out	9	376	2.4	0.0	6.1	0.0	5.4
HOOD	2000	Graduated	389	457	85.1	85.7	85.7	84.9	70.0
		Received GED	25	457	5.5	0.0	0.0	6.0	10.0
		Continued HS	22	457	4.8	14.3	0.0	5.0	8.0
		Dropped Out	21	457	4.6	0.0	14.3	4.1	12.0
	1999	Graduated	393	485	81.0	-	84.4	80.9	66.7
		Received GED	37	485	7.6	-	0.0	8.1	8.3
		Continued HS	20	485	4.1	-	6.3	4.0	10.4
		Dropped Out	35	485	7.2	-	9.4	7.0	14.6
HOPKINS	2000	Graduated	351	407	86.2	80.0	86.7	87.2	79.2
		Received GED	16	407	3.9	0.0	0.0	4.5	5.2
		Continued HS	14	407	3.4	5.0	10.0	2.7	5.2
		Dropped Out	26	407	6.4	15.0	3.3	5.7	10.4
	1999	Graduated	365	433	84.3	88.4	87.5	83.4	83.1
		Received GED	19	433	4.4	2.3	3.1	4.8	2.6
		Continued HS	18	433	4.2	2.3	3.1	4.5	2.6
		Dropped Out	31	433	7.2	7.0	6.3	7.3	11.7
HOUSTON	2000	Graduated	233	284	82.0	69.2	58.3	89.9	69.6
		Received GED	9	284	3.2	1.1	8.3	3.9	3.3
		Continued HS	16	284	5.6	9.9	8.3	3.4	9.8
		Dropped Out	26	284	9.2	19.8	25.0	2.8	17.4

Note: A dash (-) indicates data are not reported to protect student anonymity.

Table 2. Longitudinal Dropout and Completion Rates, Grades 9-12, by Student Group, Classes of 1999 and 2000: County Listing

County	Class	Final Status	Number	Number in Cohort	Rate %				
					All Students	Afr. Am.	Hispanic	White	Econ. Dis.
HOUSTON	1999	Graduated	269	291	92.4	92.9	71.4	92.9	89.9
		Received GED	8	291	2.7	0.0	14.3	3.8	3.8
		Continued HS	4	291	1.4	3.0	0.0	0.5	1.3
		Dropped Out	10	291	3.4	4.0	14.3	2.7	5.1
HOWARD	2000	Graduated	330	404	81.7	76.9	75.0	85.5	65.4
		Received GED	19	404	4.7	7.7	3.6	5.2	6.7
		Continued HS	16	404	4.0	7.7	7.1	2.0	6.7
		Dropped Out	39	404	9.7	7.7	14.3	7.2	21.2
	1999	Graduated	292	376	77.7	81.3	66.4	82.6	58.4
		Received GED	24	376	6.4	0.0	4.3	7.9	3.9
		Continued HS	24	376	6.4	0.0	12.1	4.1	15.6
		Dropped Out	36	376	9.6	18.8	17.2	5.4	22.1
HUDSPETH	2000	Graduated	43	49	87.8	-	86.1	91.7	87.5
		Received GED	0	49	0.0	-	0.0	0.0	0.0
		Continued HS	3	49	6.1	-	5.6	8.3	7.5
		Dropped Out	3	49	6.1	-	8.3	0.0	5.0
	1999	Graduated	58	63	92.1	-	89.6	100.0	89.1
		Received GED	0	63	0.0	-	0.0	0.0	0.0
		Continued HS	1	63	1.6	-	2.1	0.0	2.2
		Dropped Out	4	63	6.3	-	8.3	0.0	8.7
HUNT	2000	Graduated	725	888	81.6	71.2	49.1	86.3	68.5
		Received GED	28	888	3.2	3.8	3.6	3.0	3.4
		Continued HS	56	888	6.3	6.8	20.0	5.1	9.5
		Dropped Out	79	888	8.9	18.2	27.3	5.6	18.5
	1999	Graduated	710	845	84.0	74.0	68.9	86.2	69.6
		Received GED	39	845	4.6	2.1	6.7	4.9	5.6
		Continued HS	35	845	4.1	10.4	6.7	3.2	7.5
		Dropped Out	61	845	7.2	13.5	17.8	5.7	17.4
HUTCHINSON	2000	Graduated	357	407	87.7	100.0	76.9	89.5	70.7
		Received GED	9	407	2.2	0.0	0.0	2.8	4.9
		Continued HS	12	407	2.9	0.0	6.2	2.2	4.9
		Dropped Out	29	407	7.1	0.0	16.9	5.6	19.5
	1999	Graduated	349	386	90.4	85.7	91.7	90.2	87.5
		Received GED	2	386	0.5	0.0	0.0	0.6	0.0
		Continued HS	11	386	2.8	14.3	1.7	2.9	2.1
		Dropped Out	24	386	6.2	0.0	6.7	6.3	10.4
IRION	2000	Graduated	27	29	93.1	-	100.0	91.3	66.7
		Received GED	2	29	6.9	-	0.0	8.7	33.3
		Continued HS	0	29	0.0	-	0.0	0.0	0.0
		Dropped Out	0	29	0.0	-	0.0	0.0	0.0
	1999	Graduated	24	24	100.0	-	100.0	100.0	100.0
		Received GED	0	24	0.0	-	0.0	0.0	0.0
		Continued HS	0	24	0.0	-	0.0	0.0	0.0
		Dropped Out	0	24	0.0	-	0.0	0.0	0.0
JACK	2000	Graduated	111	143	77.6	-	80.0	77.3	65.5
		Received GED	8	143	5.6	-	0.0	5.3	6.9
		Continued HS	5	143	3.5	-	0.0	3.8	3.4
		Dropped Out	19	143	13.3	-	20.0	13.6	24.1
	1999	Graduated	125	136	91.9	-	81.8	92.6	88.0
		Received GED	1	136	0.7	-	0.0	0.8	0.0
		Continued HS	4	136	2.9	-	9.1	2.5	0.0
		Dropped Out	6	136	4.4	-	9.1	4.1	12.0
JACKSON	2000	Graduated	216	233	92.7	100.0	88.3	93.6	88.9
		Received GED	8	233	3.4	0.0	3.3	3.8	3.7
		Continued HS	9	233	3.9	0.0	8.3	2.6	7.4
		Dropped Out	0	233	0.0	0.0	0.0	0.0	0.0
	1999	Graduated	209	222	94.1	92.9	92.2	94.9	89.8
		Received GED	3	222	1.4	0.0	0.0	1.9	0.0
		Continued HS	6	222	2.7	0.0	5.9	1.9	6.1
		Dropped Out	4	222	1.8	7.1	2.0	1.3	4.1

Note: A dash (-) indicates data are not reported to protect student anonymity.

Table 2. Longitudinal Dropout and Completion Rates, Grades 9-12, by Student Group, Classes of 1999 and 2000: County Listing

County	Class	Final Status	Number	Number in Cohort	Rate %				
					All Students	Afr. Am.	Hispanic	White	Econ. Dis.
JASPER	2000	Graduated	454	512	88.7	88.0	100.0	88.5	78.9
		Received GED	22	512	4.3	5.6	0.0	4.1	8.3
		Continued HS	15	512	2.9	3.7	0.0	2.8	6.0
		Dropped Out	21	512	4.1	2.8	0.0	4.6	6.8
	1999	Graduated	440	500	88.0	88.8	30.0	89.2	80.2
		Received GED	9	500	1.8	3.1	0.0	1.5	3.2
		Continued HS	25	500	5.0	3.1	30.0	4.9	5.6
		Dropped Out	26	500	5.2	5.1	40.0	4.4	11.1
JEFF DAVIS	2000	Graduated	34	38	89.5	-	100.0	85.7	71.4
		Received GED	1	38	2.6	-	0.0	0.0	7.1
		Continued HS	3	38	7.9	-	0.0	14.3	21.4
		Dropped Out	0	38	0.0	-	0.0	0.0	0.0
	1999	Graduated	29	37	78.4	-	94.4	63.2	84.6
		Received GED	6	37	16.2	-	5.6	26.3	0.0
		Continued HS	2	37	5.4	-	0.0	10.5	15.4
		Dropped Out	0	37	0.0	-	0.0	0.0	0.0
JEFFERSON	2000	Graduated	2,266	2,770	81.8	77.0	69.4	87.5	70.4
		Received GED	90	2,770	3.2	2.6	2.0	3.8	2.9
		Continued HS	149	2,770	5.4	6.6	11.7	3.6	8.7
		Dropped Out	265	2,770	9.6	13.7	16.8	5.0	18.0
	1999	Graduated	1,810	2,418	74.9	64.5	62.3	84.2	59.5
		Received GED	99	2,418	4.1	3.5	5.1	4.5	3.9
		Continued HS	247	2,418	10.2	16.4	16.7	4.6	18.3
		Dropped Out	262	2,418	10.8	15.6	15.9	6.7	18.3
JIM HOGG	2000	Graduated	71	78	91.0	-	90.7	-	94.4
		Received GED	5	78	6.4	-	6.7	-	3.7
		Continued HS	1	78	1.3	-	1.3	-	1.9
		Dropped Out	1	78	1.3	-	1.3	-	0.0
	1999	Graduated	80	88	90.9	-	92.8	60.0	92.4
		Received GED	4	88	4.5	-	3.6	20.0	4.5
		Continued HS	2	88	2.3	-	1.2	20.0	3.0
		Dropped Out	2	88	2.3	-	2.4	0.0	0.0
JIM WELLS	2000	Graduated	489	574	85.2	90.0	84.0	88.5	79.0
		Received GED	20	574	3.5	0.0	3.4	4.4	5.3
		Continued HS	30	574	5.2	0.0	5.8	3.5	6.2
		Dropped Out	35	574	6.1	10.0	6.7	3.5	9.5
	1999	Graduated	480	590	81.4	83.3	78.6	89.3	80.0
		Received GED	12	590	2.0	16.7	1.6	2.7	1.3
		Continued HS	53	590	9.0	0.0	10.1	6.0	8.3
		Dropped Out	45	590	7.6	0.0	9.7	2.0	10.4
JOHNSON	2000	Graduated	1,315	1,541	85.3	93.8	76.8	86.0	75.4
		Received GED	62	1,541	4.0	0.0	4.5	4.1	6.9
		Continued HS	84	1,541	5.5	4.2	7.1	5.3	6.2
		Dropped Out	80	1,541	5.2	2.1	11.6	4.6	11.5
	1999	Graduated	1,229	1,472	83.5	87.8	82.3	83.4	70.4
		Received GED	50	1,472	3.4	0.0	3.4	3.5	4.7
		Continued HS	97	1,472	6.6	9.8	8.8	6.2	12.3
		Dropped Out	96	1,472	6.5	2.4	5.4	6.8	12.6
JONES	2000	Graduated	189	202	93.6	100.0	89.1	95.2	91.3
		Received GED	3	202	1.5	0.0	0.0	2.1	1.3
		Continued HS	2	202	1.0	0.0	2.2	0.0	1.3
		Dropped Out	8	202	4.0	0.0	8.7	2.7	6.3
	1999	Graduated	220	240	91.7	90.9	87.5	94.4	88.6
		Received GED	7	240	2.9	0.0	1.6	2.5	2.5
		Continued HS	3	240	1.3	0.0	1.6	1.2	1.3
		Dropped Out	10	240	4.2	9.1	9.4	1.9	7.6
KARNES	2000	Graduated	189	223	84.8	-	75.4	96.7	77.3
		Received GED	9	223	4.0	-	7.1	0.0	4.1
		Continued HS	12	223	5.4	-	8.7	1.1	10.3
		Dropped Out	13	223	5.8	-	8.7	2.2	8.2

Note: A dash (-) indicates data are not reported to protect student anonymity.

Table 2. Longitudinal Dropout and Completion Rates, Grades 9-12, by Student Group, Classes of 1999 and 2000: County Listing

County	Class	Final Status	Number	Number in Cohort	Rate %				
					All Students	Afr. Am.	Hispanic	White	Econ. Dis.
KARNES	1999	Graduated	180	215	83.7	80.0	77.7	92.0	74.2
		Received GED	6	215	2.8	20.0	2.5	2.3	4.3
		Continued HS	7	215	3.3	0.0	3.3	3.4	2.2
		Dropped Out	22	215	10.2	0.0	16.5	2.3	19.4
KAUFMAN	2000	Graduated	883	1,001	88.2	86.3	81.8	89.4	78.6
		Received GED	28	1,001	2.8	0.8	2.3	3.2	3.2
		Continued HS	48	1,001	4.8	7.6	12.5	3.5	11.0
		Dropped Out	42	1,001	4.2	5.3	3.4	3.9	7.1
	1999	Graduated	835	978	85.4	80.2	81.4	86.5	78.8
		Received GED	37	978	3.8	1.0	2.3	4.3	2.8
		Continued HS	58	978	5.9	10.9	10.5	4.8	10.1
		Dropped Out	48	978	4.9	7.9	5.8	4.3	8.4
KENDALL	2000	Graduated	374	427	87.6	-	68.7	91.1	71.2
		Received GED	31	427	7.3	-	16.4	5.6	15.3
		Continued HS	17	427	4.0	-	11.9	2.5	10.2
		Dropped Out	5	427	1.2	-	3.0	0.8	3.4
	1999	Graduated	323	359	90.0	-	79.7	91.9	78.0
		Received GED	22	359	6.1	-	11.9	5.1	16.0
		Continued HS	12	359	3.3	-	8.5	2.4	6.0
		Dropped Out	2	359	0.6	-	0.0	0.7	0.0
KENT	2000	Graduated	17	18	94.4	-	-	100.0	-
		Received GED	0	18	0.0	-	-	0.0	-
		Continued HS	0	18	0.0	-	-	0.0	-
		Dropped Out	1	18	5.6	-	-	0.0	-
	1999	Graduated	16	17	94.1	-	-	92.3	100.0
		Received GED	0	17	0.0	-	-	0.0	0.0
		Continued HS	1	17	5.9	-	-	7.7	0.0
		Dropped Out	0	17	0.0	-	-	0.0	0.0
KERR	2000	Graduated	391	491	79.6	55.6	63.2	84.2	66.7
		Received GED	33	491	6.7	22.2	9.5	5.8	6.5
		Continued HS	22	491	4.5	11.1	12.6	2.4	7.5
		Dropped Out	45	491	9.2	11.1	14.7	7.7	19.4
	1999	Graduated	389	490	79.4	57.1	61.4	84.4	68.8
		Received GED	27	490	5.5	42.9	4.0	5.3	9.2
		Continued HS	30	490	6.1	0.0	15.8	3.7	8.3
		Dropped Out	44	490	9.0	0.0	18.8	6.6	13.8
KIMBLE	2000	Graduated	43	56	76.8	-	75.0	77.3	61.5
		Received GED	2	56	3.6	-	0.0	4.5	0.0
		Continued HS	1	56	1.8	-	0.0	2.3	0.0
		Dropped Out	10	56	17.9	-	25.0	15.9	38.5
	1999	Graduated	38	48	79.2	-	66.7	83.3	55.6
		Received GED	2	48	4.2	-	0.0	5.6	11.1
		Continued HS	4	48	8.3	-	25.0	2.8	0.0
		Dropped Out	4	48	8.3	-	8.3	8.3	33.3
KING	2000	Graduated	5	5	100.0	-	-	100.0	-
		Received GED	0	5	0.0	-	-	0.0	-
		Continued HS	0	5	0.0	-	-	0.0	-
		Dropped Out	0	5	0.0	-	-	0.0	-
	1999	Graduated	7	7	100.0	-	-	100.0	-
		Received GED	0	7	0.0	-	-	0.0	-
		Continued HS	0	7	0.0	-	-	0.0	-
		Dropped Out	0	7	0.0	-	-	0.0	-
KINNEY	2000	Graduated	52	53	98.1	-	100.0	95.8	100.0
		Received GED	1	53	1.9	-	0.0	4.2	0.0
		Continued HS	0	53	0.0	-	0.0	0.0	0.0
		Dropped Out	0	53	0.0	-	0.0	0.0	0.0
	1999	Graduated	39	45	86.7	-	85.2	88.2	96.3
		Received GED	2	45	4.4	-	3.7	5.9	0.0
		Continued HS	0	45	0.0	-	0.0	0.0	0.0
		Dropped Out	4	45	8.9	-	11.1	5.9	3.7

Note: A dash (-) indicates data are not reported to protect student anonymity.

Table 2. Longitudinal Dropout and Completion Rates, Grades 9-12, by Student Group, Classes of 1999 and 2000: County Listing

County	Class	Final Status	Number	Number in Cohort	Rate %				
					All Students	Afr. Am.	Hispanic	White	Econ. Dis.
KLEBERG	2000	Graduated	377	464	81.3	66.7	79.0	89.1	73.0
		Received GED	9	464	1.9	0.0	1.8	2.7	2.3
		Continued HS	50	464	10.8	13.3	12.3	6.4	15.5
		Dropped Out	28	464	6.0	20.0	6.9	1.8	9.2
	1999	Graduated	313	397	78.8	77.8	74.8	88.6	75.5
		Received GED	7	397	1.8	0.0	1.9	1.9	2.5
		Continued HS	44	397	11.1	11.1	13.7	4.8	13.2
		Dropped Out	33	397	8.3	11.1	9.6	4.8	8.8
KNOX	2000	Graduated	69	74	93.2	100.0	89.7	95.0	93.8
		Received GED	0	74	0.0	0.0	0.0	0.0	0.0
		Continued HS	0	74	0.0	0.0	0.0	0.0	0.0
		Dropped Out	5	74	6.8	0.0	10.3	5.0	6.3
	1999	Graduated	64	73	87.7	75.0	87.1	91.2	86.0
		Received GED	0	73	0.0	0.0	0.0	0.0	0.0
		Continued HS	0	73	0.0	0.0	0.0	0.0	0.0
		Dropped Out	9	73	12.3	25.0	12.9	8.8	14.0
LA SALLE	2000	Graduated	65	94	69.1	-	72.5	63.6	63.9
		Received GED	16	94	17.0	-	11.3	36.4	19.7
		Continued HS	7	94	7.4	-	8.8	0.0	9.8
		Dropped Out	6	94	6.4	-	7.5	0.0	6.6
	1999	Graduated	70	98	71.4	-	74.7	66.7	66.7
		Received GED	9	98	9.2	-	4.8	33.3	9.7
		Continued HS	3	98	3.1	-	2.4	0.0	2.8
		Dropped Out	16	98	16.3	-	18.1	0.0	20.8
LAMAR	2000	Graduated	507	576	88.0	84.9	75.0	88.9	76.2
		Received GED	21	576	3.6	0.9	0.0	4.4	5.7
		Continued HS	21	576	3.6	11.3	25.0	1.5	10.7
		Dropped Out	27	576	4.7	2.8	0.0	5.2	7.4
	1999	Graduated	486	553	87.9	88.9	81.8	88.4	80.6
		Received GED	19	553	3.4	2.8	0.0	3.6	2.4
		Continued HS	14	553	2.5	3.7	0.0	2.4	3.2
		Dropped Out	34	553	6.1	4.6	18.2	5.7	13.7
LAMB	2000	Graduated	211	250	84.4	75.0	76.9	96.0	73.8
		Received GED	15	250	6.0	15.0	6.9	3.0	8.4
		Continued HS	8	250	3.2	10.0	4.6	0.0	5.6
		Dropped Out	16	250	6.4	0.0	11.5	1.0	12.1
	1999	Graduated	239	278	86.0	80.0	79.6	95.7	82.9
		Received GED	4	278	1.4	0.0	2.2	0.9	0.9
		Continued HS	11	278	4.0	4.0	5.1	2.6	5.4
		Dropped Out	24	278	8.6	16.0	13.1	0.9	10.8
LAMPASAS	2000	Graduated	231	257	89.9	81.8	86.1	90.9	73.3
		Received GED	6	257	2.3	9.1	0.0	2.4	6.7
		Continued HS	12	257	4.7	0.0	5.6	4.8	8.3
		Dropped Out	8	257	3.1	9.1	8.3	1.9	11.7
	1999	Graduated	240	267	89.9	77.8	82.9	91.8	76.2
		Received GED	6	267	2.2	11.1	2.9	1.8	4.8
		Continued HS	11	267	4.1	11.1	8.6	3.2	9.5
		Dropped Out	10	267	3.7	0.0	5.7	3.2	9.5
LAVACA	2000	Graduated	172	177	97.2	100.0	94.7	97.2	95.5
		Received GED	3	177	1.7	0.0	5.3	1.4	2.3
		Continued HS	0	177	0.0	0.0	0.0	0.0	0.0
		Dropped Out	2	177	1.1	0.0	0.0	1.4	2.3
	1999	Graduated	154	166	92.8	83.3	75.0	95.0	82.8
		Received GED	4	166	2.4	5.6	12.5	1.4	3.4
		Continued HS	5	166	3.0	0.0	12.5	2.9	6.9
		Dropped Out	3	166	1.8	11.1	0.0	0.7	6.9
LEE	2000	Graduated	212	229	92.6	96.4	85.4	93.7	87.3
		Received GED	7	229	3.1	0.0	4.9	3.1	1.8
		Continued HS	2	229	0.9	3.6	0.0	0.6	0.0
		Dropped Out	8	229	3.5	0.0	9.8	2.5	10.9

Note: A dash (-) indicates data are not reported to protect student anonymity.

Table 2. Longitudinal Dropout and Completion Rates, Grades 9-12, by Student Group, Classes of 1999 and 2000: County Listing

County	Class	Final Status	Number	Number in Cohort	Rate %				
					All Students	Afr. Am.	Hispanic	White	Econ. Dis.
LEE	1999	Graduated	192	218	88.1	90.3	75.8	90.8	80.0
		Received GED	6	218	2.8	0.0	6.1	2.6	9.1
		Continued HS	6	218	2.8	3.2	9.1	1.3	3.6
		Dropped Out	14	218	6.4	6.5	9.1	5.2	7.3
LEON	2000	Graduated	208	232	89.7	87.0	90.9	89.7	87.0
		Received GED	9	232	3.9	4.3	0.0	4.1	3.7
		Continued HS	3	232	1.3	4.3	0.0	1.0	1.9
		Dropped Out	12	232	5.2	4.3	9.1	5.1	7.4
	1999	Graduated	180	208	86.5	88.0	91.7	86.5	71.2
		Received GED	8	208	3.8	0.0	0.0	4.7	5.8
		Continued HS	4	208	1.9	0.0	0.0	1.8	3.8
		Dropped Out	16	208	7.7	12.0	8.3	7.1	19.2
LIBERTY	2000	Graduated	661	806	82.0	80.0	78.3	82.8	77.0
		Received GED	50	806	6.2	3.8	4.3	6.8	4.9
		Continued HS	42	806	5.2	10.5	5.8	4.3	8.7
		Dropped Out	53	806	6.6	5.7	11.6	6.0	9.3
	1999	Graduated	695	863	80.5	77.5	64.2	82.7	71.4
		Received GED	44	863	5.1	2.5	0.0	5.7	4.5
		Continued HS	46	863	5.3	7.5	13.2	4.1	6.0
		Dropped Out	78	863	9.0	12.5	22.6	7.5	18.1
LIMESTONE	2000	Graduated	222	248	89.5	86.4	75.7	94.0	83.6
		Received GED	4	248	1.6	0.0	2.7	2.0	1.6
		Continued HS	14	248	5.6	8.5	16.2	2.0	11.5
		Dropped Out	8	248	3.2	5.1	5.4	2.0	3.3
	1999	Graduated	221	252	87.7	89.2	80.0	88.1	83.1
		Received GED	7	252	2.8	0.0	0.0	4.4	1.4
		Continued HS	13	252	5.2	7.7	4.0	4.4	8.5
		Dropped Out	11	252	4.4	3.1	16.0	3.1	7.0
LIPSCOMB	2000	Graduated	51	57	89.5	-	84.6	90.7	100.0
		Received GED	1	57	1.8	-	0.0	2.3	0.0
		Continued HS	2	57	3.5	-	0.0	4.7	0.0
		Dropped Out	3	57	5.3	-	15.4	2.3	0.0
	1999	Graduated	55	63	87.3	-	81.3	89.1	75.0
		Received GED	1	63	1.6	-	0.0	2.2	0.0
		Continued HS	2	63	3.2	-	6.3	2.2	10.0
		Dropped Out	5	63	7.9	-	12.5	6.5	15.0
LIVE OAK	2000	Graduated	128	148	86.5	-	85.7	87.0	80.0
		Received GED	10	148	6.8	-	4.3	9.1	10.0
		Continued HS	7	148	4.7	-	8.6	1.3	7.5
		Dropped Out	3	148	2.0	-	1.4	2.6	2.5
	1999	Graduated	138	162	85.2	-	79.7	89.7	73.0
		Received GED	3	162	1.9	-	1.4	2.3	2.7
		Continued HS	10	162	6.2	-	8.1	4.6	10.8
		Dropped Out	11	162	6.8	-	10.8	3.4	13.5
LLANO	2000	Graduated	80	95	84.2	-	-	83.3	72.7
		Received GED	4	95	4.2	-	-	4.4	9.1
		Continued HS	1	95	1.1	-	-	1.1	0.0
		Dropped Out	10	95	10.5	-	-	11.1	18.2
	1999	Graduated	81	103	78.6	-	50.0	81.7	50.0
		Received GED	5	103	4.9	-	0.0	5.4	7.1
		Continued HS	2	103	1.9	-	0.0	2.2	7.1
		Dropped Out	15	103	14.6	-	50.0	10.8	35.7
LUBBOCK	2000	Graduated	2,467	2,949	83.7	73.7	74.2	91.0	74.1
		Received GED	92	2,949	3.1	2.2	3.1	3.2	3.9
		Continued HS	217	2,949	7.4	12.2	12.2	3.6	10.6
		Dropped Out	173	2,949	5.9	11.9	10.5	2.1	11.4
	1999	Graduated	2,390	2,894	82.6	77.1	71.7	89.4	70.9
		Received GED	97	2,894	3.4	0.8	3.2	3.9	3.7
		Continued HS	186	2,894	6.4	9.8	9.8	4.0	9.0
		Dropped Out	221	2,894	7.6	12.4	15.3	2.6	16.4

Note: A dash (-) indicates data are not reported to protect student anonymity.



Table 2. Longitudinal Dropout and Completion Rates, Grades 9-12, by Student Group, Classes of 1999 and 2000: County Listing

County	Class	Final Status	Number	Number in Cohort	Rate %				
					All Students	Afr. Am.	Hispanic	White	Econ. Dis.
LYNN	2000	Graduated	107	114	93.9	88.9	92.4	97.4	94.0
		Received GED	1	114	0.9	0.0	0.0	2.6	0.0
		Continued HS	2	114	1.8	11.1	1.5	0.0	1.5
		Dropped Out	4	114	3.5	0.0	6.1	0.0	4.5
	1999	Graduated	111	117	94.9	100.0	92.2	97.9	89.1
		Received GED	0	117	0.0	0.0	0.0	0.0	0.0
		Continued HS	3	117	2.6	0.0	3.1	2.1	4.3
		Dropped Out	3	117	2.6	0.0	4.7	0.0	6.5
MADISON	2000	Graduated	115	141	81.6	80.0	68.4	84.4	72.0
		Received GED	14	141	9.9	8.0	21.1	8.3	16.0
		Continued HS	7	141	5.0	4.0	10.5	4.2	4.0
		Dropped Out	5	141	3.5	8.0	0.0	3.1	8.0
	1999	Graduated	121	142	85.2	87.0	84.2	84.8	83.0
		Received GED	15	142	10.6	13.0	5.3	11.1	11.3
		Continued HS	4	142	2.8	0.0	5.3	3.0	1.9
		Dropped Out	2	142	1.4	0.0	5.3	1.0	3.8
MARION	2000	Graduated	86	104	82.7	86.4	-	79.7	82.1
		Received GED	2	104	1.9	2.3	-	1.7	2.6
		Continued HS	5	104	4.8	6.8	-	3.4	2.6
		Dropped Out	11	104	10.6	4.5	-	15.3	12.8
	1999	Graduated	1	22	4.5	0.0	-	0.0	0.0
		Received GED	8	22	36.4	25.0	-	46.2	33.3
		Continued HS	2	22	9.1	0.0	-	15.4	0.0
		Dropped Out	11	22	50.0	75.0	-	38.5	66.7
MARTIN	2000	Graduated	66	76	86.8	-	86.8	86.5	85.2
		Received GED	6	76	7.9	-	5.3	10.8	3.7
		Continued HS	1	76	1.3	-	2.6	0.0	3.7
		Dropped Out	3	76	3.9	-	5.3	2.7	7.4
	1999	Graduated	60	70	85.7	-	75.0	94.6	73.3
		Received GED	1	70	1.4	-	0.0	2.7	0.0
		Continued HS	1	70	1.4	-	3.1	0.0	0.0
		Dropped Out	8	70	11.4	-	21.9	2.7	26.7
MASON	2000	Graduated	50	55	90.9	-	91.7	90.7	87.5
		Received GED	2	55	3.6	-	0.0	4.7	0.0
		Continued HS	0	55	0.0	-	0.0	0.0	0.0
		Dropped Out	3	55	5.5	-	8.3	4.7	12.5
	1999	Graduated	42	49	85.7	-	83.3	85.7	69.2
		Received GED	1	49	2.0	-	0.0	2.9	7.7
		Continued HS	1	49	2.0	-	0.0	2.9	0.0
		Dropped Out	5	49	10.2	-	16.7	8.6	23.1
MATAGORDA	2000	Graduated	480	558	86.0	85.0	79.8	89.0	81.3
		Received GED	29	558	5.2	1.7	5.8	6.0	3.8
		Continued HS	19	558	3.4	3.3	5.2	2.7	5.3
		Dropped Out	30	558	5.4	10.0	9.2	2.3	9.6
	1999	Graduated	485	566	85.7	86.4	75.0	90.6	78.6
		Received GED	27	566	4.8	1.1	6.9	5.1	5.2
		Continued HS	19	566	3.4	4.5	5.6	1.7	5.7
		Dropped Out	35	566	6.2	8.0	12.5	2.7	10.5
MAVERICK	2000	Graduated	521	686	75.9	-	75.3	90.9	74.2
		Received GED	36	686	5.2	-	5.2	9.1	5.3
		Continued HS	66	686	9.6	-	10.0	0.0	10.8
		Dropped Out	63	686	9.2	-	9.5	0.0	9.8
	1999	Graduated	546	788	69.3	-	68.7	94.7	69.5
		Received GED	33	788	4.2	-	4.0	5.3	4.1
		Continued HS	114	788	14.5	-	14.9	0.0	15.0
		Dropped Out	95	788	12.1	-	12.4	0.0	11.3
MCCULLOCH	2000	Graduated	105	121	86.8	85.7	79.1	91.5	78.4
		Received GED	9	121	7.4	14.3	9.3	5.6	13.5
		Continued HS	2	121	1.7	0.0	4.7	0.0	0.0
		Dropped Out	5	121	4.1	0.0	7.0	2.8	8.1

Note: A dash (-) indicates data are not reported to protect student anonymity.

Table 2. Longitudinal Dropout and Completion Rates, Grades 9-12, by Student Group, Classes of 1999 and 2000: County Listing

County	Class	Final Status	Number	Number in Cohort	Rate %				
					All Students	Afr. Am.	Hispanic	White	Econ. Dis.
MCCULLOCH	1999	Graduated	108	124	87.1	-	82.4	88.4	80.9
		Received GED	8	124	6.5	-	5.9	7.0	10.6
		Continued HS	2	124	1.6	-	2.9	1.2	2.1
		Dropped Out	6	124	4.8	-	8.8	3.5	6.4
MCLENNAN	2000	Graduated	1,982	2,451	80.9	68.7	71.5	86.7	67.3
		Received GED	159	2,451	6.5	4.9	6.1	7.1	8.6
		Continued HS	148	2,451	6.0	14.1	12.2	2.1	10.0
		Dropped Out	162	2,451	6.6	12.3	10.1	4.1	14.1
	1999	Graduated	1,853	2,297	80.7	70.3	70.5	86.3	72.0
		Received GED	119	2,297	5.2	4.4	6.0	5.3	7.3
		Continued HS	147	2,297	6.4	12.6	10.6	3.4	8.2
		Dropped Out	178	2,297	7.7	12.6	12.8	4.9	12.5
MCMULLEN	2000	Graduated	11	15	73.3	-	75.0	71.4	57.1
		Received GED	0	15	0.0	-	0.0	0.0	0.0
		Continued HS	4	15	26.7	-	25.0	28.6	42.9
		Dropped Out	0	15	0.0	-	0.0	0.0	0.0
	1999	Graduated	13	15	86.7	-	85.7	87.5	71.4
		Received GED	1	15	6.7	-	14.3	0.0	14.3
		Continued HS	0	15	0.0	-	0.0	0.0	0.0
		Dropped Out	1	15	6.7	-	0.0	12.5	14.3
MEDINA	2000	Graduated	469	532	88.2	-	83.1	93.6	77.3
		Received GED	15	532	2.8	-	4.2	0.8	4.5
		Continued HS	14	532	2.6	-	2.3	3.0	3.2
		Dropped Out	34	532	6.4	-	10.3	2.7	14.9
	1999	Graduated	447	527	84.8	83.3	79.1	90.2	78.1
		Received GED	12	527	2.3	16.7	3.1	1.1	2.5
		Continued HS	22	527	4.2	0.0	5.1	3.4	3.1
		Dropped Out	46	527	8.7	0.0	12.6	5.3	16.3
MENARD	2000	Graduated	35	37	94.6	-	94.1	95.0	94.4
		Received GED	2	37	5.4	-	5.9	5.0	5.6
		Continued HS	0	37	0.0	-	0.0	0.0	0.0
		Dropped Out	0	37	0.0	-	0.0	0.0	0.0
	1999	Graduated	35	35	100.0	-	100.0	100.0	100.0
		Received GED	0	35	0.0	-	0.0	0.0	0.0
		Continued HS	0	35	0.0	-	0.0	0.0	0.0
		Dropped Out	0	35	0.0	-	0.0	0.0	0.0
MIDLAND	2000	Graduated	1,373	1,736	79.1	70.0	70.8	84.8	59.7
		Received GED	83	1,736	4.8	2.7	3.6	5.8	6.1
		Continued HS	113	1,736	6.5	13.3	10.2	3.7	13.6
		Dropped Out	167	1,736	9.6	14.0	15.4	5.7	20.6
	1999	Graduated	1,283	1,669	76.9	64.3	62.5	84.9	56.1
		Received GED	70	1,669	4.2	2.3	4.1	4.5	4.2
		Continued HS	103	1,669	6.2	16.3	10.8	2.8	13.4
		Dropped Out	213	1,669	12.8	17.1	22.6	7.8	26.3
MILAM	2000	Graduated	280	310	90.3	83.3	90.5	91.9	81.5
		Received GED	16	310	5.2	5.6	4.1	5.1	7.6
		Continued HS	6	310	1.9	2.8	1.4	2.0	4.3
		Dropped Out	8	310	2.6	8.3	4.1	1.0	6.5
	1999	Graduated	289	317	91.2	82.9	85.7	94.0	85.7
		Received GED	9	317	2.8	2.9	3.2	2.8	6.6
		Continued HS	10	317	3.2	8.6	6.3	1.4	3.3
		Dropped Out	9	317	2.8	5.7	4.8	1.8	4.4
MILLS	2000	Graduated	60	67	89.6	-	90.9	89.3	85.7
		Received GED	4	67	6.0	-	0.0	7.1	9.5
		Continued HS	0	67	0.0	-	0.0	0.0	0.0
		Dropped Out	3	67	4.5	-	9.1	3.6	4.8
	1999	Graduated	62	71	87.3	-	90.9	88.1	81.8
		Received GED	0	71	0.0	-	0.0	0.0	0.0
		Continued HS	5	71	7.0	-	0.0	6.8	6.1
		Dropped Out	4	71	5.6	-	9.1	5.1	12.1

Note: A dash (-) indicates data are not reported to protect student anonymity.

Table 2. Longitudinal Dropout and Completion Rates, Grades 9-12, by Student Group, Classes of 1999 and 2000: County Listing

County	Class	Final Status	Number	Number in Cohort	Rate %				
					All Students	Afr. Am.	Hispanic	White	Econ. Dis.
MITCHELL	2000	Graduated	105	114	92.1	100.0	84.4	96.8	87.5
		Received GED	0	114	0.0	0.0	0.0	0.0	0.0
		Continued HS	3	114	2.6	0.0	4.4	1.6	6.3
		Dropped Out	6	114	5.3	0.0	11.1	1.6	6.3
	1999	Graduated	107	122	87.7	87.5	78.0	95.3	79.2
		Received GED	1	122	0.8	0.0	0.0	1.6	0.0
		Continued HS	3	122	2.5	0.0	2.0	3.1	2.1
		Dropped Out	11	122	9.0	12.5	20.0	0.0	18.8
MONTAGUE	2000	Graduated	196	238	82.4	-	76.2	82.7	72.4
		Received GED	14	238	5.9	-	0.0	6.5	10.3
		Continued HS	7	238	2.9	-	4.8	2.8	1.7
		Dropped Out	21	238	8.8	-	19.0	7.9	15.5
	1999	Graduated	215	265	81.1	-	93.8	80.7	73.7
		Received GED	15	265	5.7	-	0.0	6.1	8.8
		Continued HS	12	265	4.5	-	6.3	4.1	8.8
		Dropped Out	23	265	8.7	-	0.0	9.0	8.8
MONTGOMERY	2000	Graduated	2,927	3,504	83.5	82.6	76.5	84.3	69.8
		Received GED	245	3,504	7.0	4.5	6.9	7.2	10.5
		Continued HS	150	3,504	4.3	4.5	7.5	3.9	6.9
		Dropped Out	182	3,504	5.2	8.4	9.1	4.5	12.8
	1999	Graduated	2,747	3,334	82.4	80.0	68.8	83.9	65.6
		Received GED	184	3,334	5.5	1.7	5.3	5.8	8.1
		Continued HS	185	3,334	5.5	7.4	13.5	4.6	9.2
		Dropped Out	218	3,334	6.5	10.9	12.5	5.7	17.1
MOORE	2000	Graduated	242	270	89.6	-	86.5	93.2	77.4
		Received GED	5	270	1.9	-	2.3	1.5	3.2
		Continued HS	9	270	3.3	-	3.8	3.0	11.3
		Dropped Out	14	270	5.2	-	7.5	2.3	8.1
	1999	Graduated	249	288	86.5	-	77.4	93.5	68.7
		Received GED	8	288	2.8	-	1.6	3.9	4.5
		Continued HS	3	288	1.0	-	1.6	0.6	3.0
		Dropped Out	28	288	9.7	-	19.4	1.9	23.9
MORRIS	2000	Graduated	159	197	80.7	89.1	75.0	77.7	76.1
		Received GED	11	197	5.6	1.8	0.0	7.7	4.5
		Continued HS	16	197	8.1	3.6	16.7	9.2	9.0
		Dropped Out	11	197	5.6	5.5	8.3	5.4	10.4
	1999	Graduated	182	196	92.9	95.1	-	93.0	90.4
		Received GED	4	196	2.0	0.0	-	3.1	0.0
		Continued HS	5	196	2.6	4.9	-	0.8	3.8
		Dropped Out	5	196	2.6	0.0	-	3.1	5.8
MOTLEY	2000	Graduated	19	22	86.4	-	-	100.0	66.7
		Received GED	0	22	0.0	-	-	0.0	0.0
		Continued HS	0	22	0.0	-	-	0.0	0.0
		Dropped Out	3	22	13.6	-	-	0.0	33.3
	1999	Graduated	21	22	95.5	-	-	95.0	87.5
		Received GED	1	22	4.5	-	-	5.0	12.5
		Continued HS	0	22	0.0	-	-	0.0	0.0
		Dropped Out	0	22	0.0	-	-	0.0	0.0
NACOGDOCHES	2000	Graduated	599	692	86.6	84.0	67.2	90.3	79.9
		Received GED	28	692	4.0	1.9	4.7	4.5	3.6
		Continued HS	36	692	5.2	7.7	21.9	1.9	8.8
		Dropped Out	29	692	4.2	6.4	6.3	3.2	7.7
	1999	Graduated	510	586	87.0	84.2	63.3	90.6	80.1
		Received GED	22	586	3.8	3.3	4.1	3.9	3.4
		Continued HS	17	586	2.9	2.5	10.2	2.2	4.1
		Dropped Out	37	586	6.3	10.0	22.4	3.4	12.3
NAVARRO	2000	Graduated	466	528	88.3	79.2	81.0	92.0	79.4
		Received GED	18	528	3.4	1.0	6.3	3.6	4.6
		Continued HS	12	528	2.3	5.0	4.8	1.1	6.1
		Dropped Out	32	528	6.1	14.9	7.9	3.3	9.9

Note: A dash (-) indicates data are not reported to protect student anonymity.

Table 2. Longitudinal Dropout and Completion Rates, Grades 9-12, by Student Group, Classes of 1999 and 2000: County Listing

County	Class	Final Status	Number	Number in Cohort	Rate %				
					All Students	Afr. Am.	Hispanic	White	Econ. Dis.
NAVARRO	1999	Graduated	413	503	82.1	79.6	75.6	84.1	73.2
		Received GED	26	503	5.2	2.8	2.2	6.1	4.9
		Continued HS	18	503	3.6	5.6	8.9	2.3	4.2
		Dropped Out	46	503	9.1	12.0	13.3	7.5	17.6
NEWTON	2000	Graduated	169	187	90.4	93.4	-	88.7	91.0
		Received GED	3	187	1.6	0.0	-	2.4	2.2
		Continued HS	4	187	2.1	1.6	-	2.4	1.1
		Dropped Out	11	187	5.9	4.9	-	6.5	5.6
	1999	Graduated	168	180	93.3	96.6	-	91.7	92.7
		Received GED	0	180	0.0	0.0	-	0.0	0.0
		Continued HS	5	180	2.8	1.7	-	3.3	3.7
		Dropped Out	7	180	3.9	1.7	-	5.0	3.7
NOLAN	2000	Graduated	224	269	83.3	62.5	81.7	87.4	78.6
		Received GED	18	269	6.7	20.8	4.3	6.0	4.1
		Continued HS	6	269	2.2	0.0	3.2	2.0	5.1
		Dropped Out	21	269	7.8	16.7	10.8	4.6	12.2
	1999	Graduated	242	275	88.0	72.7	79.8	93.2	75.9
		Received GED	5	275	1.8	9.1	0.0	2.3	3.8
		Continued HS	9	275	3.3	9.1	7.1	1.1	6.3
		Dropped Out	19	275	6.9	9.1	13.1	3.4	13.9
NUECES	2000	Graduated	3,238	4,292	75.4	74.2	70.7	83.5	71.5
		Received GED	234	4,292	5.5	4.3	4.4	7.5	4.8
		Continued HS	458	4,292	10.7	14.5	13.2	5.6	11.3
		Dropped Out	362	4,292	8.4	7.0	11.7	3.4	12.4
	1999	Graduated	3,052	4,219	72.3	63.3	67.2	82.4	66.8
		Received GED	214	4,219	5.1	4.8	4.5	5.8	4.3
		Continued HS	488	4,219	11.6	17.0	14.2	6.5	13.4
		Dropped Out	465	4,219	11.0	14.9	14.1	5.3	15.4
OCHILTREE	2000	Graduated	107	128	83.6	-	78.0	86.2	83.8
		Received GED	8	128	6.3	-	7.3	5.7	8.1
		Continued HS	5	128	3.9	-	7.3	2.3	5.4
		Dropped Out	8	128	6.3	-	7.3	5.7	2.7
	1999	Graduated	108	127	85.0	-	80.8	86.0	70.6
		Received GED	4	127	3.1	-	0.0	4.0	0.0
		Continued HS	6	127	4.7	-	3.8	5.0	5.9
		Dropped Out	9	127	7.1	-	15.4	5.0	23.5
OLDHAM	2000	Graduated	72	79	91.1	-	100.0	88.5	85.7
		Received GED	1	79	1.3	-	0.0	1.6	2.4
		Continued HS	1	79	1.3	-	0.0	1.6	2.4
		Dropped Out	5	79	6.3	-	0.0	8.2	9.5
	1999	Graduated	62	71	87.3	-	80.0	88.1	88.9
		Received GED	1	71	1.4	-	0.0	1.7	0.0
		Continued HS	4	71	5.6	-	0.0	6.8	2.8
		Dropped Out	4	71	5.6	-	20.0	3.4	8.3
ORANGE	2000	Graduated	1,071	1,242	86.2	80.2	90.2	86.9	73.4
		Received GED	60	1,242	4.8	0.8	7.3	5.2	7.7
		Continued HS	46	1,242	3.7	6.6	0.0	3.5	9.0
		Dropped Out	65	1,242	5.2	12.4	2.4	4.4	9.9
	1999	Graduated	1,058	1,241	85.3	73.3	61.1	86.6	71.7
		Received GED	47	1,241	3.8	2.6	11.1	3.9	7.5
		Continued HS	62	1,241	5.0	9.5	16.7	4.4	7.5
		Dropped Out	74	1,241	6.0	14.7	11.1	5.1	13.2
PALO PINTO	2000	Graduated	250	316	79.1	91.7	63.8	81.3	71.3
		Received GED	25	316	7.9	8.3	8.5	7.9	7.4
		Continued HS	11	316	3.5	0.0	8.5	2.8	3.2
		Dropped Out	30	316	9.5	0.0	19.1	7.9	18.1
	1999	Graduated	250	327	76.5	92.9	54.5	79.9	69.8
		Received GED	19	327	5.8	0.0	13.6	4.2	7.0
		Continued HS	16	327	4.9	0.0	6.8	4.9	5.8
		Dropped Out	42	327	12.8	7.1	25.0	11.0	17.4

Note: A dash (-) indicates data are not reported to protect student anonymity.

Table 2. Longitudinal Dropout and Completion Rates, Grades 9-12, by Student Group, Classes of 1999 and 2000: County Listing

County	Class	Final Status	Number	Number in Cohort	Rate %				
					All Students	Afr. Am.	Hispanic	White	Econ. Dis.
PANOLA	2000	Graduated	272	328	82.9	80.5	-	83.7	77.3
		Received GED	15	328	4.6	1.3	-	5.7	1.5
		Continued HS	15	328	4.6	9.1	-	3.3	6.1
		Dropped Out	26	328	7.9	9.1	-	7.3	15.2
	1999	Graduated	241	298	80.9	82.4	63.6	81.3	77.2
		Received GED	19	298	6.4	2.9	0.0	7.8	7.0
		Continued HS	13	298	4.4	4.4	9.1	4.1	8.8
		Dropped Out	25	298	8.4	10.3	27.3	6.8	7.0
PARKER	2000	Graduated	799	992	80.5	41.2	66.7	82.1	62.1
		Received GED	84	992	8.5	11.8	12.1	8.3	16.4
		Continued HS	60	992	6.0	47.1	18.2	4.4	12.1
		Dropped Out	49	992	4.9	0.0	3.0	5.3	9.5
	1999	Graduated	764	927	82.4	37.5	71.2	83.7	68.3
		Received GED	60	927	6.5	25.0	5.1	6.4	9.8
		Continued HS	52	927	5.6	37.5	11.9	4.8	9.8
		Dropped Out	51	927	5.5	0.0	11.9	5.1	12.2
PARMER	2000	Graduated	153	169	90.5	-	85.2	96.3	89.2
		Received GED	3	169	1.8	-	2.3	1.3	1.4
		Continued HS	2	169	1.2	-	1.1	1.3	2.7
		Dropped Out	11	169	6.5	-	11.4	1.3	6.8
	1999	Graduated	156	177	88.1	-	86.5	90.0	82.3
		Received GED	2	177	1.1	-	0.0	2.5	0.0
		Continued HS	4	177	2.3	-	1.0	3.8	1.3
		Dropped Out	15	177	8.5	-	12.5	3.8	16.5
PECOS	2000	Graduated	237	303	78.2	9.1	74.7	92.7	60.5
		Received GED	26	303	8.6	72.7	7.2	4.2	16.8
		Continued HS	12	303	4.0	9.1	5.2	1.0	5.0
		Dropped Out	28	303	9.2	9.1	12.9	2.1	17.6
	1999	Graduated	271	346	78.3	37.5	74.8	88.9	61.9
		Received GED	19	346	5.5	50.0	3.9	5.6	10.8
		Continued HS	23	346	6.6	12.5	8.7	1.9	10.8
		Dropped Out	33	346	9.5	0.0	12.6	3.7	16.5
POLK	2000	Graduated	342	414	82.6	89.7	76.7	81.8	78.3
		Received GED	14	414	3.4	0.0	0.0	4.5	1.7
		Continued HS	30	414	7.2	3.4	11.6	7.5	10.0
		Dropped Out	28	414	6.8	6.9	11.6	6.2	10.0
	1999	Graduated	298	388	76.8	84.6	78.6	74.6	78.2
		Received GED	26	388	6.7	0.0	3.6	8.5	5.6
		Continued HS	21	388	5.4	1.5	14.3	5.6	4.8
		Dropped Out	43	388	11.1	13.8	3.6	11.3	11.3
POTTER	2000	Graduated	1,556	2,023	76.9	73.9	66.5	80.6	66.2
		Received GED	144	2,023	7.1	2.9	5.9	8.2	8.2
		Continued HS	121	2,023	6.0	4.3	11.2	4.4	6.4
		Dropped Out	202	2,023	10.0	18.8	16.4	6.8	19.2
	1999	Graduated	1,496	1,962	76.2	68.0	60.5	82.4	63.1
		Received GED	118	1,962	6.0	4.7	6.1	6.4	7.2
		Continued HS	127	1,962	6.5	3.3	11.2	4.9	10.1
		Dropped Out	221	1,962	11.3	24.0	22.2	6.3	19.6
PRESIDIO	2000	Graduated	110	148	74.3	-	73.2	88.9	72.4
		Received GED	3	148	2.0	-	1.4	11.1	1.6
		Continued HS	5	148	3.4	-	3.6	0.0	3.3
		Dropped Out	30	148	20.3	-	21.7	0.0	22.8
	1999	Graduated	99	128	77.3	-	76.0	100.0	78.6
		Received GED	7	128	5.5	-	5.8	0.0	4.1
		Continued HS	1	128	0.8	-	0.8	0.0	1.0
		Dropped Out	21	128	16.4	-	17.4	0.0	16.3
RAINS	2000	Graduated	88	101	87.1	-	-	86.2	92.0
		Received GED	5	101	5.0	-	-	5.3	8.0
		Continued HS	5	101	5.0	-	-	5.3	0.0
		Dropped Out	3	101	3.0	-	-	3.2	0.0

Note: A dash (-) indicates data are not reported to protect student anonymity.

Table 2. Longitudinal Dropout and Completion Rates, Grades 9-12, by Student Group, Classes of 1999 and 2000: County Listing

County	Class	Final Status	Number	Number in Cohort	Rate %				
					All Students	Afr. Am.	Hispanic	White	Econ. Dis.
RAINS	1999	Graduated	75	93	80.6	-	-	80.0	64.7
		Received GED	3	93	3.2	-	-	3.5	0.0
		Continued HS	3	93	3.2	-	-	3.5	5.9
		Dropped Out	12	93	12.9	-	-	12.9	29.4
RANDALL	2000	Graduated	451	508	88.8	72.7	78.4	90.7	74.3
		Received GED	35	508	6.9	18.2	9.8	6.1	11.4
		Continued HS	6	508	1.2	9.1	2.0	0.9	2.9
		Dropped Out	16	508	3.1	0.0	9.8	2.3	11.4
	1999	Graduated	447	523	85.5	100.0	67.3	87.5	54.3
		Received GED	33	523	6.3	0.0	13.5	5.5	20.0
		Continued HS	9	523	1.7	0.0	3.8	1.3	5.7
		Dropped Out	34	523	6.5	0.0	15.4	5.7	20.0
REAGAN	2000	Graduated	79	83	95.2	100.0	92.5	97.3	87.5
		Received GED	0	83	0.0	0.0	0.0	0.0	0.0
		Continued HS	2	83	2.4	0.0	5.0	0.0	12.5
		Dropped Out	2	83	2.4	0.0	2.5	2.7	0.0
	1999	Graduated	63	68	92.6	-	88.9	96.8	100.0
		Received GED	0	68	0.0	-	0.0	0.0	0.0
		Continued HS	4	68	5.9	-	8.3	3.2	0.0
		Dropped Out	1	68	1.5	-	2.8	0.0	0.0
REAL	2000	Graduated	27	30	90.0	-	88.9	90.0	83.3
		Received GED	1	30	3.3	-	0.0	5.0	8.3
		Continued HS	1	30	3.3	-	0.0	5.0	0.0
		Dropped Out	1	30	3.3	-	11.1	0.0	8.3
	1999	Graduated	23	28	82.1	-	100.0	76.2	78.6
		Received GED	4	28	14.3	-	0.0	19.0	21.4
		Continued HS	1	28	3.6	-	0.0	4.8	0.0
		Dropped Out	0	28	0.0	-	0.0	0.0	0.0
RED RIVER	2000	Graduated	175	204	85.8	83.1	66.7	88.2	84.0
		Received GED	7	204	3.4	0.0	0.0	5.1	0.0
		Continued HS	6	204	2.9	5.1	11.1	1.5	2.7
		Dropped Out	16	204	7.8	11.9	22.2	5.1	13.3
	1999	Graduated	160	191	83.8	84.9	-	84.3	71.2
		Received GED	7	191	3.7	0.0	-	5.2	6.1
		Continued HS	6	191	3.1	1.9	-	3.7	4.5
		Dropped Out	18	191	9.4	13.2	-	6.7	18.2
REEVES	2000	Graduated	167	211	79.1	-	76.9	92.0	82.5
		Received GED	10	211	4.7	-	4.9	4.0	3.9
		Continued HS	11	211	5.2	-	5.5	4.0	2.9
		Dropped Out	23	211	10.9	-	12.6	0.0	10.7
	1999	Graduated	164	200	82.0	-	79.8	96.4	79.5
		Received GED	3	200	1.5	-	1.8	0.0	3.6
		Continued HS	12	200	6.0	-	6.5	0.0	6.0
		Dropped Out	21	200	10.5	-	11.9	3.6	10.8
REFUGIO	2000	Graduated	130	149	87.2	85.7	85.3	90.0	71.4
		Received GED	4	149	2.7	7.1	1.3	3.3	5.7
		Continued HS	3	149	2.0	7.1	1.3	1.7	0.0
		Dropped Out	12	149	8.1	0.0	12.0	5.0	22.9
	1999	Graduated	101	116	87.1	83.3	79.3	96.2	67.6
		Received GED	0	116	0.0	0.0	0.0	0.0	0.0
		Continued HS	6	116	5.2	16.7	5.2	3.8	11.8
		Dropped Out	9	116	7.8	0.0	15.5	0.0	20.6
ROBERTS	2000	Graduated	17	17	100.0	-	-	100.0	-
		Received GED	0	17	0.0	-	-	0.0	-
		Continued HS	0	17	0.0	-	-	0.0	-
		Dropped Out	0	17	0.0	-	-	0.0	-
	1999	Graduated	16	17	94.1	-	-	92.9	-
		Received GED	0	17	0.0	-	-	0.0	-
		Continued HS	0	17	0.0	-	-	0.0	-
		Dropped Out	1	17	5.9	-	-	7.1	-

Note: A dash (-) indicates data are not reported to protect student anonymity.

Table 2. Longitudinal Dropout and Completion Rates, Grades 9-12, by Student Group, Classes of 1999 and 2000: County Listing

County	Class	Final Status	Number	Number in Cohort	Rate %				
					All Students	Afr. Am.	Hispanic	White	Econ. Dis.
ROBERTSON	2000	Graduated	172	217	79.3	73.4	63.6	88.6	77.8
		Received GED	9	217	4.1	2.5	3.0	5.7	4.2
		Continued HS	5	217	2.3	3.8	6.1	0.0	4.2
		Dropped Out	31	217	14.3	20.3	27.3	5.7	13.9
	1999	Graduated	146	199	73.4	74.6	50.0	78.8	63.5
		Received GED	10	199	5.0	3.0	3.6	6.7	4.8
		Continued HS	16	199	8.0	10.4	14.3	4.8	7.9
		Dropped Out	27	199	13.6	11.9	32.1	9.6	23.8
ROCKWALL	2000	Graduated	479	577	83.0	66.7	72.7	84.6	78.1
		Received GED	21	577	3.6	0.0	5.5	3.7	0.0
		Continued HS	54	577	9.4	33.3	12.7	8.0	15.6
		Dropped Out	23	577	4.0	0.0	9.1	3.7	6.3
	1999	Graduated	454	535	84.9	77.8	78.0	85.6	63.0
		Received GED	25	535	4.7	5.6	0.0	5.1	3.7
		Continued HS	37	535	6.9	11.1	9.8	6.6	18.5
		Dropped Out	19	535	3.6	5.6	12.2	2.8	14.8
RUNNELS	2000	Graduated	144	164	87.8	-	89.2	86.7	80.3
		Received GED	7	164	4.3	-	6.2	3.1	6.6
		Continued HS	4	164	2.4	-	1.5	3.1	4.9
		Dropped Out	9	164	5.5	-	3.1	7.1	8.2
	1999	Graduated	150	173	86.7	-	83.1	89.1	83.1
		Received GED	1	173	0.6	-	0.0	0.9	0.0
		Continued HS	8	173	4.6	-	5.1	3.6	7.0
		Dropped Out	14	173	8.1	-	11.9	6.4	9.9
RUSK	2000	Graduated	458	524	87.4	86.0	82.5	88.6	80.3
		Received GED	22	524	4.2	0.8	0.0	5.5	2.0
		Continued HS	9	524	1.7	2.5	0.0	1.7	3.4
		Dropped Out	35	524	6.7	10.7	17.5	4.2	14.3
	1999	Graduated	440	523	84.1	83.8	71.4	85.7	73.6
		Received GED	19	523	3.6	2.3	0.0	4.2	2.8
		Continued HS	22	523	4.2	5.4	8.6	3.4	7.6
		Dropped Out	42	523	8.0	8.5	20.0	6.7	16.0
SABINE	2000	Graduated	94	100	94.0	100.0	-	92.4	92.3
		Received GED	2	100	2.0	0.0	-	2.5	2.6
		Continued HS	2	100	2.0	0.0	-	2.5	2.6
		Dropped Out	2	100	2.0	0.0	-	2.5	2.6
	1999	Graduated	88	101	87.1	93.3	-	86.7	81.1
		Received GED	4	101	4.0	0.0	-	4.8	0.0
		Continued HS	4	101	4.0	6.7	-	2.4	8.1
		Dropped Out	5	101	5.0	0.0	-	6.0	10.8
SAN AUGUSTINE	2000	Graduated	105	112	93.8	100.0	-	88.5	91.7
		Received GED	2	112	1.8	0.0	-	3.8	0.0
		Continued HS	3	112	2.7	0.0	-	3.8	5.0
		Dropped Out	2	112	1.8	0.0	-	3.8	3.3
	1999	Graduated	84	92	91.3	92.1	-	92.3	90.2
		Received GED	0	92	0.0	0.0	-	0.0	0.0
		Continued HS	5	92	5.4	7.9	-	1.9	9.8
		Dropped Out	3	92	3.3	0.0	-	5.8	0.0
SAN JACINTO	2000	Graduated	162	203	79.8	83.3	77.8	78.8	78.7
		Received GED	13	203	6.4	0.0	11.1	8.2	4.0
		Continued HS	13	203	6.4	10.4	0.0	5.5	8.0
		Dropped Out	15	203	7.4	6.3	11.1	7.5	9.3
	1999	Graduated	133	169	78.7	83.9	71.4	77.7	76.6
		Received GED	9	169	5.3	0.0	14.3	6.2	1.6
		Continued HS	14	169	8.3	6.5	14.3	8.5	14.1
		Dropped Out	13	169	7.7	9.7	0.0	7.7	7.8
SAN PATRICIO	2000	Graduated	808	992	81.5	95.0	76.5	87.4	75.0
		Received GED	42	992	4.2	0.0	3.8	4.6	4.5
		Continued HS	70	992	7.1	5.0	8.9	4.8	9.0
		Dropped Out	72	992	7.3	0.0	10.8	3.1	11.5

Note: A dash (-) indicates data are not reported to protect student anonymity.

Table 2. Longitudinal Dropout and Completion Rates, Grades 9-12, by Student Group, Classes of 1999 and 2000: County Listing

County	Class	Final Status	Number	Number in Cohort	Rate %				
					All Students	Afr. Am.	Hispanic	White	Econ. Dis.
SAN PATRICIO	1999	Graduated	795	966	82.3	73.9	78.4	88.2	74.2
		Received GED	40	966	4.1	4.3	3.2	5.0	4.9
		Continued HS	54	966	5.6	13.0	7.1	3.3	8.2
		Dropped Out	77	966	8.0	8.7	11.3	3.5	12.8
SAN SABA	2000	Graduated	68	74	91.9	-	88.2	92.9	81.8
		Received GED	2	74	2.7	-	0.0	3.6	4.5
		Continued HS	1	74	1.4	-	5.9	0.0	4.5
		Dropped Out	3	74	4.1	-	5.9	3.6	9.1
	1999	Graduated	88	99	88.9	-	88.9	90.1	76.9
		Received GED	1	99	1.0	-	0.0	1.4	0.0
		Continued HS	1	99	1.0	-	0.0	1.4	0.0
		Dropped Out	9	99	9.1	-	11.1	7.0	23.1
SCHLEICHER	2000	Graduated	47	53	88.7	-	80.8	96.3	82.4
		Received GED	0	53	0.0	-	0.0	0.0	0.0
		Continued HS	1	53	1.9	-	3.8	0.0	0.0
		Dropped Out	5	53	9.4	-	15.4	3.7	17.6
	1999	Graduated	47	54	87.0	-	79.3	96.0	77.3
		Received GED	2	54	3.7	-	6.9	0.0	4.5
		Continued HS	1	54	1.9	-	3.4	0.0	4.5
		Dropped Out	4	54	7.4	-	10.3	4.0	13.6
SCURRY	2000	Graduated	249	276	90.2	-	82.0	93.9	82.6
		Received GED	6	276	2.2	-	1.1	2.8	2.9
		Continued HS	8	276	2.9	-	4.5	2.2	4.3
		Dropped Out	13	276	4.7	-	12.4	1.1	10.1
	1999	Graduated	247	270	91.5	100.0	85.9	93.4	80.4
		Received GED	4	270	1.5	0.0	0.0	2.2	1.8
		Continued HS	7	270	2.6	0.0	6.4	1.1	7.1
		Dropped Out	12	270	4.4	0.0	7.7	3.3	10.7
SHACKELFORD	2000	Graduated	38	44	86.4	-	-	85.0	91.7
		Received GED	2	44	4.5	-	-	5.0	0.0
		Continued HS	0	44	0.0	-	-	0.0	0.0
		Dropped Out	4	44	9.1	-	-	10.0	8.3
	1999	Graduated	52	56	92.9	-	83.3	94.0	80.0
		Received GED	1	56	1.8	-	0.0	2.0	5.0
		Continued HS	0	56	0.0	-	0.0	0.0	0.0
		Dropped Out	3	56	5.4	-	16.7	4.0	15.0
SHELBY	2000	Graduated	247	305	81.0	81.9	64.3	81.6	80.0
		Received GED	19	305	6.2	1.2	7.1	8.3	3.8
		Continued HS	11	305	3.6	7.2	14.3	1.5	6.7
		Dropped Out	28	305	9.2	9.6	14.3	8.7	9.5
	1999	Graduated	255	311	82.0	82.2	66.7	82.8	75.5
		Received GED	11	311	3.5	1.1	6.7	4.4	3.9
		Continued HS	11	311	3.5	5.6	6.7	2.5	4.9
		Dropped Out	34	311	10.9	11.1	20.0	10.3	15.7
SHERMAN	2000	Graduated	59	65	90.8	-	83.3	93.6	88.5
		Received GED	0	65	0.0	-	0.0	0.0	0.0
		Continued HS	4	65	6.2	-	11.1	4.3	7.7
		Dropped Out	2	65	3.1	-	5.6	2.1	3.8
	1999	Graduated	37	43	86.0	-	58.3	96.8	75.0
		Received GED	2	43	4.7	-	8.3	3.2	8.3
		Continued HS	1	43	2.3	-	8.3	0.0	0.0
		Dropped Out	3	43	7.0	-	25.0	0.0	16.7
SMITH	2000	Graduated	1,619	1,948	83.1	80.1	62.4	87.5	69.7
		Received GED	86	1,948	4.4	2.4	4.1	5.4	5.6
		Continued HS	103	1,948	5.3	8.0	10.7	3.4	6.9
		Dropped Out	140	1,948	7.2	9.6	22.8	3.7	17.7
	1999	Graduated	1,658	1,958	84.7	83.6	69.3	87.1	77.8
		Received GED	80	1,958	4.1	1.2	5.4	5.2	4.9
		Continued HS	82	1,958	4.2	6.2	10.2	2.5	6.0
		Dropped Out	138	1,958	7.0	9.1	15.1	5.2	11.2

Note: A dash (-) indicates data are not reported to protect student anonymity.



Table 2. Longitudinal Dropout and Completion Rates, Grades 9-12, by Student Group, Classes of 1999 and 2000: County Listing

County	Class	Final Status	Number	Number in Cohort	Rate %				
					All Students	Afr. Am.	Hispanic	White	Econ. Dis.
SOMERVELL	2000	Graduated	91	101	90.1	-	80.0	92.9	76.2
		Received GED	4	101	4.0	-	6.7	3.5	4.8
		Continued HS	3	101	3.0	-	13.3	1.2	14.3
		Dropped Out	3	101	3.0	-	0.0	2.4	4.8
	1999	Graduated	99	111	89.2	-	85.7	90.0	80.6
		Received GED	2	111	1.8	-	0.0	2.2	3.2
		Continued HS	6	111	5.4	-	9.5	4.4	12.9
		Dropped Out	4	111	3.6	-	4.8	3.3	3.2
STARR	2000	Graduated	648	866	74.8	-	74.8	-	76.1
		Received GED	2	866	0.2	-	0.2	-	0.3
		Continued HS	83	866	9.6	-	9.6	-	8.7
		Dropped Out	133	866	15.4	-	15.4	-	14.9
	1999	Graduated	608	808	75.2	-	75.1	-	77.0
		Received GED	9	808	1.1	-	1.1	-	0.7
		Continued HS	81	808	10.0	-	10.1	-	8.9
		Dropped Out	110	808	13.6	-	13.7	-	13.5
STEPHENS	2000	Graduated	118	147	80.3	83.3	79.3	80.2	68.8
		Received GED	7	147	4.8	0.0	3.4	5.4	6.3
		Continued HS	6	147	4.1	0.0	3.4	4.5	12.5
		Dropped Out	16	147	10.9	16.7	13.8	9.9	12.5
	1999	Graduated	97	118	82.2	-	76.5	82.3	65.2
		Received GED	4	118	3.4	-	5.9	3.1	8.7
		Continued HS	6	118	5.1	-	0.0	6.3	8.7
		Dropped Out	11	118	9.3	-	17.6	8.3	17.4
STERLING	2000	Graduated	27	27	100.0	-	100.0	100.0	100.0
		Received GED	0	27	0.0	-	0.0	0.0	0.0
		Continued HS	0	27	0.0	-	0.0	0.0	0.0
		Dropped Out	0	27	0.0	-	0.0	0.0	0.0
	1999	Graduated	26	27	96.3	-	85.7	100.0	-
		Received GED	0	27	0.0	-	0.0	0.0	-
		Continued HS	1	27	3.7	-	14.3	0.0	-
		Dropped Out	0	27	0.0	-	0.0	0.0	-
STONEWALL	2000	Graduated	28	28	100.0	-	100.0	100.0	100.0
		Received GED	0	28	0.0	-	0.0	0.0	0.0
		Continued HS	0	28	0.0	-	0.0	0.0	0.0
		Dropped Out	0	28	0.0	-	0.0	0.0	0.0
	1999	Graduated	30	30	100.0	-	-	100.0	100.0
		Received GED	0	30	0.0	-	-	0.0	0.0
		Continued HS	0	30	0.0	-	-	0.0	0.0
		Dropped Out	0	30	0.0	-	-	0.0	0.0
SUTTON	2000	Graduated	65	69	94.2	-	95.0	92.9	94.4
		Received GED	0	69	0.0	-	0.0	0.0	0.0
		Continued HS	2	69	2.9	-	5.0	0.0	5.6
		Dropped Out	2	69	2.9	-	0.0	7.1	0.0
	1999	Graduated	59	71	83.1	-	76.2	93.1	68.8
		Received GED	3	71	4.2	-	4.8	3.4	6.3
		Continued HS	5	71	7.0	-	11.9	0.0	18.8
		Dropped Out	4	71	5.6	-	7.1	3.4	6.3
SWISHER	2000	Graduated	121	145	83.4	80.0	76.1	87.2	76.1
		Received GED	10	145	6.9	0.0	8.7	6.4	10.9
		Continued HS	4	145	2.8	0.0	4.3	2.1	4.3
		Dropped Out	10	145	6.9	20.0	10.9	4.3	8.7
	1999	Graduated	133	152	87.5	71.4	81.5	92.2	82.3
		Received GED	2	152	1.3	0.0	1.9	1.1	1.6
		Continued HS	8	152	5.3	0.0	11.1	2.2	8.1
		Dropped Out	9	152	5.9	28.6	5.6	4.4	8.1
TARRANT	2000	Graduated	12,267	15,402	79.6	71.6	65.2	85.5	64.9
		Received GED	633	15,402	4.1	1.7	2.7	5.3	3.8
		Continued HS	1,090	15,402	7.1	11.7	14.3	3.9	13.9
		Dropped Out	1,412	15,402	9.2	14.9	17.8	5.3	17.4

Note: A dash (-) indicates data are not reported to protect student anonymity.

Table 2. Longitudinal Dropout and Completion Rates, Grades 9-12, by Student Group, Classes of 1999 and 2000: County Listing

County	Class	Final Status	Number	Number in Cohort	Rate %				
					All Students	Afr. Am.	Hispanic	White	Econ. Dis.
TARRANT	1999	Graduated	11,955	15,099	79.2	72.9	65.1	84.2	63.7
		Received GED	543	15,099	3.6	2.3	2.4	4.3	3.4
		Continued HS	1,078	15,099	7.1	10.2	12.7	4.9	11.4
		Dropped Out	1,523	15,099	10.1	14.6	19.8	6.5	21.4
TAYLOR	2000	Graduated	1,303	1,585	82.2	82.4	66.0	87.4	64.4
		Received GED	81	1,585	5.1	3.1	5.1	5.2	9.1
		Continued HS	100	1,585	6.3	9.9	12.9	3.8	12.4
		Dropped Out	101	1,585	6.4	4.6	16.0	3.6	14.1
	1999	Graduated	1,190	1,511	78.8	67.3	60.7	84.2	58.2
		Received GED	59	1,511	3.9	1.0	5.3	3.9	5.6
		Continued HS	113	1,511	7.5	12.5	14.4	5.1	13.0
		Dropped Out	149	1,511	9.9	19.2	19.6	6.7	23.1
TERRELL	2000	Graduated	13	13	100.0	-	100.0	100.0	-
		Received GED	0	13	0.0	-	0.0	0.0	-
		Continued HS	0	13	0.0	-	0.0	0.0	-
		Dropped Out	0	13	0.0	-	0.0	0.0	-
	1999	Graduated	14	14	100.0	-	100.0	-	100.0
		Received GED	0	14	0.0	-	0.0	-	0.0
		Continued HS	0	14	0.0	-	0.0	-	0.0
		Dropped Out	0	14	0.0	-	0.0	-	0.0
TERRY	2000	Graduated	165	193	85.5	-	80.8	91.6	78.3
		Received GED	5	193	2.6	-	1.9	3.6	3.3
		Continued HS	9	193	4.7	-	5.8	3.6	5.0
		Dropped Out	14	193	7.3	-	11.5	1.2	13.3
	1999	Graduated	179	214	83.6	66.7	76.2	93.8	78.3
		Received GED	5	214	2.3	0.0	1.0	4.2	3.3
		Continued HS	9	214	4.2	16.7	5.7	1.0	1.7
		Dropped Out	21	214	9.8	16.7	17.1	1.0	16.7
THROCKMORTON	2000	Graduated	28	29	96.6	-	100.0	95.8	100.0
		Received GED	1	29	3.4	-	0.0	4.2	0.0
		Continued HS	0	29	0.0	-	0.0	0.0	0.0
		Dropped Out	0	29	0.0	-	0.0	0.0	0.0
	1999	Graduated	29	29	100.0	-	-	100.0	100.0
		Received GED	0	29	0.0	-	-	0.0	0.0
		Continued HS	0	29	0.0	-	-	0.0	0.0
		Dropped Out	0	29	0.0	-	-	0.0	0.0
TITUS	2000	Graduated	282	319	88.4	87.0	82.7	90.8	90.3
		Received GED	12	319	3.8	0.0	2.7	5.1	2.2
		Continued HS	10	319	3.1	2.2	10.7	0.5	2.2
		Dropped Out	15	319	4.7	10.9	4.0	3.6	5.4
	1999	Graduated	273	298	91.6	87.2	85.4	94.0	84.3
		Received GED	3	298	1.0	0.0	0.0	1.5	1.4
		Continued HS	9	298	3.0	4.3	6.3	2.0	5.7
		Dropped Out	13	298	4.4	8.5	8.3	2.5	8.6
TOM GREEN	2000	Graduated	1,135	1,401	81.0	81.6	68.7	88.7	67.0
		Received GED	84	1,401	6.0	6.6	8.1	4.6	10.0
		Continued HS	70	1,401	5.0	6.6	7.7	3.2	6.2
		Dropped Out	112	1,401	8.0	5.3	15.4	3.5	16.8
	1999	Graduated	1,077	1,339	80.4	79.2	65.4	88.8	67.9
		Received GED	67	1,339	5.0	5.7	6.9	4.0	8.4
		Continued HS	83	1,339	6.2	5.7	11.1	3.5	7.3
		Dropped Out	112	1,339	8.4	9.4	16.6	3.7	16.4
TRAVIS	2000	Graduated	4,906	6,685	73.4	63.5	59.9	84.5	52.2
		Received GED	294	6,685	4.4	5.1	3.8	4.8	5.6
		Continued HS	708	6,685	10.6	15.9	17.1	5.0	19.9
		Dropped Out	777	6,685	11.6	15.4	19.2	5.8	22.3
	1999	Graduated	4,598	6,118	75.2	66.0	60.7	85.4	57.2
		Received GED	223	6,118	3.6	3.4	3.5	4.0	4.3
		Continued HS	638	6,118	10.4	13.9	16.2	6.2	16.0
		Dropped Out	659	6,118	10.8	16.7	19.6	4.3	22.5

Note: A dash (-) indicates data are not reported to protect student anonymity.

Table 2. Longitudinal Dropout and Completion Rates, Grades 9-12, by Student Group, Classes of 1999 and 2000: County Listing

County	Class	Final Status	Number	Number in Cohort	Rate %				
					All Students	Afr. Am.	Hispanic	White	Econ. Dis.
TRINITY	2000	Graduated	131	145	90.3	95.7	90.0	89.3	83.7
		Received GED	5	145	3.4	0.0	0.0	4.5	7.0
		Continued HS	5	145	3.4	4.3	0.0	3.6	7.0
		Dropped Out	4	145	2.8	0.0	10.0	2.7	2.3
	1999	Graduated	128	157	81.5	100.0	80.0	78.0	83.3
		Received GED	7	157	4.5	0.0	0.0	5.5	1.9
		Continued HS	4	157	2.5	0.0	0.0	3.1	1.9
		Dropped Out	18	157	11.5	0.0	20.0	13.4	13.0
TYLER	2000	Graduated	268	301	89.0	83.3	-	90.1	82.1
		Received GED	6	301	2.0	0.0	-	2.4	2.4
		Continued HS	4	301	1.3	0.0	-	1.6	1.2
		Dropped Out	23	301	7.6	16.7	-	5.9	14.3
	1999	Graduated	254	295	86.1	83.7	-	87.5	79.3
		Received GED	11	295	3.7	0.0	-	4.2	3.3
		Continued HS	7	295	2.4	7.0	-	0.8	4.3
		Dropped Out	23	295	7.8	9.3	-	7.5	13.0
UPSHUR	2000	Graduated	450	516	87.2	87.3	86.4	87.2	84.8
		Received GED	25	516	4.8	0.0	0.0	5.8	1.4
		Continued HS	15	516	2.9	6.3	4.5	2.3	6.5
		Dropped Out	26	516	5.0	6.3	9.1	4.7	7.2
	1999	Graduated	389	449	86.6	90.7	78.6	86.3	82.5
		Received GED	14	449	3.1	3.7	0.0	3.2	3.5
		Continued HS	11	449	2.4	0.0	14.3	2.4	3.5
		Dropped Out	35	449	7.8	5.6	7.1	8.2	10.5
UPTON	2000	Graduated	82	85	96.5	-	95.0	97.6	92.3
		Received GED	0	85	0.0	-	0.0	0.0	0.0
		Continued HS	1	85	1.2	-	2.5	0.0	2.6
		Dropped Out	2	85	2.4	-	2.5	2.4	5.1
	1999	Graduated	63	75	84.0	-	75.6	93.9	75.8
		Received GED	2	75	2.7	-	2.4	3.0	6.1
		Continued HS	4	75	5.3	-	9.8	0.0	3.0
		Dropped Out	6	75	8.0	-	12.2	3.0	15.2
UVALDE	2000	Graduated	309	402	76.9	-	72.4	85.4	67.3
		Received GED	24	402	6.0	-	5.4	7.3	7.7
		Continued HS	21	402	5.2	-	6.5	2.2	6.6
		Dropped Out	48	402	11.9	-	15.7	5.1	18.4
	1999	Graduated	298	432	69.0	-	60.4	85.7	59.8
		Received GED	12	432	2.8	-	1.8	4.1	0.0
		Continued HS	45	432	10.4	-	14.1	3.4	17.5
		Dropped Out	77	432	17.8	-	23.7	6.8	22.7
VAL VERDE	2000	Graduated	501	658	76.1	100.0	74.0	83.3	73.7
		Received GED	26	658	4.0	0.0	3.6	6.1	4.8
		Continued HS	55	658	8.4	0.0	9.5	3.5	7.4
		Dropped Out	76	658	11.6	0.0	12.9	7.0	14.2
	1999	Graduated	474	640	74.1	83.3	71.0	87.7	68.8
		Received GED	19	640	3.0	16.7	2.5	4.7	3.6
		Continued HS	82	640	12.8	0.0	15.2	1.9	14.5
		Dropped Out	65	640	10.2	0.0	11.2	5.7	13.1
VAN ZANDT	2000	Graduated	530	606	87.5	91.7	90.6	87.1	81.4
		Received GED	33	606	5.4	4.2	3.1	5.6	6.2
		Continued HS	17	606	2.8	0.0	3.1	2.9	3.5
		Dropped Out	26	606	4.3	4.2	3.1	4.4	8.8
	1999	Graduated	510	575	88.7	100.0	84.0	88.7	86.7
		Received GED	26	575	4.5	0.0	8.0	4.5	6.1
		Continued HS	19	575	3.3	0.0	0.0	3.6	2.0
		Dropped Out	20	575	3.5	0.0	8.0	3.2	5.1
VICTORIA	2000	Graduated	928	1,177	78.8	78.0	71.9	85.4	70.2
		Received GED	56	1,177	4.8	1.2	4.8	5.4	6.2
		Continued HS	80	1,177	6.8	7.3	8.7	4.9	8.7
		Dropped Out	113	1,177	9.6	13.4	14.6	4.3	14.9

Note: A dash (-) indicates data are not reported to protect student anonymity.

Table 2. Longitudinal Dropout and Completion Rates, Grades 9-12, by Student Group, Classes of 1999 and 2000: County Listing

County	Class	Final Status	Number	Number in Cohort	Rate %				
					All Students	Afr. Am.	Hispanic	White	Econ. Dis.
VICTORIA	1999	Graduated	867	1,123	77.2	73.2	64.8	89.1	66.2
		Received GED	45	1,123	4.0	7.0	5.0	2.8	5.0
		Continued HS	103	1,123	9.2	8.5	14.9	3.9	10.7
		Dropped Out	108	1,123	9.6	11.3	15.3	4.3	18.1
WALKER	2000	Graduated	424	634	66.9	60.2	48.6	75.9	49.4
		Received GED	164	634	25.9	29.8	43.9	18.1	39.6
		Continued HS	27	634	4.3	6.4	4.7	3.2	6.9
		Dropped Out	19	634	3.0	3.5	2.8	2.9	4.1
	1999	Graduated	382	518	73.7	63.3	49.3	82.1	56.4
		Received GED	71	518	13.7	17.4	31.0	9.0	24.8
		Continued HS	45	518	8.7	11.0	14.1	6.9	10.5
		Dropped Out	20	518	3.9	8.3	5.6	2.1	8.3
WALLER	2000	Graduated	329	395	83.3	81.0	70.1	89.4	74.8
		Received GED	10	395	2.5	0.9	2.6	3.5	2.4
		Continued HS	27	395	6.8	7.8	14.3	3.5	10.6
		Dropped Out	29	395	7.3	10.3	13.0	3.5	12.2
	1999	Graduated	323	388	83.2	84.3	72.2	85.9	77.1
		Received GED	14	388	3.6	0.9	5.6	4.7	2.1
		Continued HS	24	388	6.2	6.1	16.7	3.8	11.5
		Dropped Out	27	388	7.0	8.7	5.6	5.6	9.4
WARD	2000	Graduated	157	187	84.0	85.7	85.1	82.8	83.7
		Received GED	11	187	5.9	0.0	2.3	9.7	2.0
		Continued HS	6	187	3.2	14.3	2.3	3.2	4.1
		Dropped Out	13	187	7.0	0.0	10.3	4.3	10.2
	1999	Graduated	165	208	79.3	71.4	77.8	81.0	65.2
		Received GED	7	208	3.4	0.0	0.0	7.0	2.2
		Continued HS	11	208	5.3	0.0	8.1	3.0	13.0
		Dropped Out	25	208	12.0	28.6	14.1	9.0	19.6
WASHINGTON	2000	Graduated	296	347	85.3	75.3	55.6	91.8	64.9
		Received GED	10	347	2.9	2.7	3.7	2.9	2.7
		Continued HS	19	347	5.5	9.6	18.5	2.5	17.6
		Dropped Out	22	347	6.3	12.3	22.2	2.9	14.9
	1999	Graduated	304	345	88.1	74.3	69.2	93.8	68.9
		Received GED	10	345	2.9	2.9	3.8	2.9	1.6
		Continued HS	11	345	3.2	4.3	15.4	1.7	11.5
		Dropped Out	20	345	5.8	18.6	11.5	1.7	18.0
WEBB	2000	Graduated	2,130	2,628	81.1	-	80.6	92.7	82.5
		Received GED	37	2,628	1.4	-	1.4	1.2	0.7
		Continued HS	273	2,628	10.4	-	10.6	4.9	10.5
		Dropped Out	188	2,628	7.2	-	7.4	1.2	6.3
	1999	Graduated	2,107	2,654	79.4	-	79.1	87.1	78.9
		Received GED	44	2,654	1.7	-	1.6	4.3	1.3
		Continued HS	307	2,654	11.6	-	11.8	6.5	11.9
		Dropped Out	196	2,654	7.4	-	7.6	2.2	8.0
WHARTON	2000	Graduated	542	626	86.6	78.8	78.1	94.4	74.7
		Received GED	20	626	3.2	1.9	6.6	1.5	4.0
		Continued HS	42	626	6.7	14.4	10.2	1.9	14.7
		Dropped Out	22	626	3.5	4.8	5.1	2.2	6.7
	1999	Graduated	541	619	87.4	88.9	76.7	92.7	78.0
		Received GED	17	619	2.7	0.0	2.8	3.6	1.4
		Continued HS	40	619	6.5	6.5	13.3	2.7	10.6
		Dropped Out	21	619	3.4	4.6	7.2	0.9	9.9
WHEELER	2000	Graduated	81	87	93.1	-	75.0	94.8	77.8
		Received GED	2	87	2.3	-	0.0	2.6	5.6
		Continued HS	2	87	2.3	-	25.0	0.0	11.1
		Dropped Out	2	87	2.3	-	0.0	2.6	5.6
	1999	Graduated	78	82	95.1	-	88.9	95.8	88.2
		Received GED	0	82	0.0	-	0.0	0.0	0.0
		Continued HS	2	82	2.4	-	0.0	2.8	0.0
		Dropped Out	2	82	2.4	-	11.1	1.4	11.8

Note: A dash (-) indicates data are not reported to protect student anonymity.

Table 2. Longitudinal Dropout and Completion Rates, Grades 9-12, by Student Group, Classes of 1999 and 2000: County Listing

County	Class	Final Status	Number	Number in Cohort	Rate %				
					All Students	Afr. Am.	Hispanic	White	Econ. Dis.
WICHITA	2000	Graduated	1,351	1,654	81.7	79.8	71.2	83.6	69.4
		Received GED	142	1,654	8.6	5.2	10.6	9.1	12.4
		Continued HS	50	1,654	3.0	2.1	5.3	2.7	4.6
		Dropped Out	111	1,654	6.7	13.0	13.0	4.6	13.7
	1999	Graduated	1,305	1,558	83.8	77.9	77.8	85.5	76.5
		Received GED	77	1,558	4.9	5.1	6.7	4.8	7.1
		Continued HS	61	1,558	3.9	4.6	5.2	3.5	4.4
		Dropped Out	115	1,558	7.4	12.3	10.3	6.1	12.1
WILBARGER	2000	Graduated	177	216	81.9	81.8	86.5	79.9	82.8
		Received GED	29	216	13.4	18.2	11.5	14.1	6.9
		Continued HS	5	216	2.3	0.0	1.9	2.7	5.2
		Dropped Out	5	216	2.3	0.0	0.0	3.4	5.2
	1999	Graduated	163	210	77.6	78.9	70.6	78.8	76.7
		Received GED	25	210	11.9	10.5	8.8	12.8	8.3
		Continued HS	10	210	4.8	0.0	14.7	3.2	10.0
		Dropped Out	12	210	5.7	10.5	5.9	5.1	5.0
WILLACY	2000	Graduated	264	347	76.1	-	74.8	91.7	78.0
		Received GED	17	347	4.9	-	5.3	0.0	4.6
		Continued HS	26	347	7.5	-	7.8	4.2	7.3
		Dropped Out	40	347	11.5	-	12.1	4.2	10.0
	1999	Graduated	282	387	72.9	-	70.6	92.1	72.1
		Received GED	6	387	1.6	-	1.4	2.6	1.9
		Continued HS	40	387	10.3	-	11.5	0.0	11.5
		Dropped Out	59	387	15.2	-	16.4	5.3	14.5
WILLIAMSON	2000	Graduated	3,149	3,674	85.7	76.8	74.4	88.1	68.5
		Received GED	162	3,674	4.4	6.2	4.5	4.3	7.6
		Continued HS	213	3,674	5.8	8.2	11.8	4.6	11.2
		Dropped Out	150	3,674	4.1	8.8	9.3	2.9	12.7
	1999	Graduated	2,854	3,291	86.7	86.6	74.2	88.7	73.1
		Received GED	135	3,291	4.1	4.3	5.4	4.0	8.7
		Continued HS	188	3,291	5.7	5.9	12.1	4.6	10.1
		Dropped Out	114	3,291	3.5	3.2	8.3	2.8	8.1
WILSON	2000	Graduated	390	471	82.8	-	73.3	88.4	68.9
		Received GED	12	471	2.5	-	2.9	2.1	2.8
		Continued HS	28	471	5.9	-	11.6	2.7	11.3
		Dropped Out	41	471	8.7	-	12.2	6.8	17.0
	1999	Graduated	399	476	83.8	100.0	74.5	88.5	66.4
		Received GED	14	476	2.9	0.0	3.6	2.6	3.4
		Continued HS	20	476	4.2	0.0	4.8	3.9	6.0
		Dropped Out	43	476	9.0	0.0	17.0	4.9	24.1
WINKLER	2000	Graduated	126	136	92.6	-	89.7	94.9	85.0
		Received GED	3	136	2.2	-	3.4	1.3	5.0
		Continued HS	6	136	4.4	-	6.9	2.6	10.0
		Dropped Out	1	136	0.7	-	0.0	1.3	0.0
	1999	Graduated	111	115	96.5	-	98.1	94.8	96.9
		Received GED	3	115	2.6	-	0.0	5.2	3.1
		Continued HS	1	115	0.9	-	1.9	0.0	0.0
		Dropped Out	0	115	0.0	-	0.0	0.0	0.0
WISE	2000	Graduated	478	535	89.3	80.0	76.9	90.7	72.9
		Received GED	22	535	4.1	20.0	5.8	3.8	8.6
		Continued HS	18	535	3.4	0.0	9.6	2.7	4.3
		Dropped Out	17	535	3.2	0.0	7.7	2.7	14.3
	1999	Graduated	462	545	84.8	-	73.2	86.5	67.0
		Received GED	16	545	2.9	-	0.0	3.2	1.1
		Continued HS	24	545	4.4	-	11.3	3.4	10.2
		Dropped Out	43	545	7.9	-	15.5	6.8	21.6
WOOD	2000	Graduated	357	407	87.7	85.2	94.7	87.5	75.9
		Received GED	20	407	4.9	0.0	0.0	5.6	8.9
		Continued HS	4	407	1.0	0.0	0.0	1.1	0.0
		Dropped Out	26	407	6.4	14.8	5.3	5.8	15.2

Note: A dash (-) indicates data are not reported to protect student anonymity.

Table 2. Longitudinal Dropout and Completion Rates, Grades 9-12, by Student Group, Classes of 1999 and 2000: County Listing

County	Class	Final Status	Number	Number in Cohort	Rate %				
					All Students	Afr. Am.	Hispanic	White	Econ. Dis.
WOOD	1999	Graduated	348	391	89.0	93.5	70.0	89.1	86.2
		Received GED	10	391	2.6	0.0	0.0	2.9	3.4
		Continued HS	9	391	2.3	0.0	10.0	2.3	3.4
		Dropped Out	24	391	6.1	6.5	20.0	5.7	6.9
YOAKUM	2000	Graduated	139	152	91.4	-	91.0	91.4	88.1
		Received GED	4	152	2.6	-	0.0	5.7	1.7
		Continued HS	3	152	2.0	-	3.8	0.0	3.4
		Dropped Out	6	152	3.9	-	5.1	2.9	6.8
	1999	Graduated	135	147	91.8	100.0	86.9	95.1	83.0
		Received GED	0	147	0.0	0.0	0.0	0.0	0.0
		Continued HS	5	147	3.4	0.0	6.6	1.2	6.4
		Dropped Out	7	147	4.8	0.0	6.6	3.7	10.6
YOUNG	2000	Graduated	215	250	86.0	60.0	80.6	87.5	70.0
		Received GED	13	250	5.2	0.0	5.6	5.3	5.0
		Continued HS	13	250	5.2	40.0	2.8	4.8	15.0
		Dropped Out	9	250	3.6	0.0	11.1	2.4	10.0
	1999	Graduated	198	242	81.8	-	68.2	82.7	71.4
		Received GED	6	242	2.5	-	0.0	2.8	2.9
		Continued HS	22	242	9.1	-	13.6	8.9	11.4
		Dropped Out	16	242	6.6	-	18.2	5.6	14.3
ZAPATA	2000	Graduated	156	185	84.3	-	83.5	93.3	81.3
		Received GED	4	185	2.2	-	1.8	6.7	1.4
		Continued HS	8	185	4.3	-	4.7	0.0	5.8
		Dropped Out	17	185	9.2	-	10.0	0.0	11.5
	1999	Graduated	162	183	88.5	-	89.2	81.3	86.8
		Received GED	1	183	0.5	-	0.6	0.0	0.0
		Continued HS	3	183	1.6	-	1.8	0.0	1.7
		Dropped Out	17	183	9.3	-	8.4	18.8	11.6
ZAVALA	2000	Graduated	119	144	82.6	-	83.5	60.0	85.5
		Received GED	1	144	0.7	-	0.7	0.0	0.0
		Continued HS	4	144	2.8	-	2.2	20.0	3.6
		Dropped Out	20	144	13.9	-	13.7	20.0	10.9
	1999	Graduated	91	118	77.1	-	78.3	-	76.5
		Received GED	5	118	4.2	-	4.3	-	3.5
		Continued HS	6	118	5.1	-	4.3	-	5.9
		Dropped Out	16	118	13.6	-	13.0	-	14.1

Note: A dash (-) indicates data are not reported to protect student anonymity.

## Notes on Tables 1 and 2

### **Cohort**

TEA longitudinal secondary school student status rates are based on a Grade 7 or Grade 9 cohort. A 1994-95 Grade 9 cohort, for example, consists of all students who attended Grade 9 in a Texas public school for the first time during the 1994-95 school year. The cohort is named based on the expected year of graduation. In our example, this is the class of 1998. Each member of the cohort is tracked through the fall of 1998, and a final status is assigned. Students who transfer out are removed from the cohort. Students who transfer in on grade-level—for example, into Grade 10 in 1995-96—are added to the cohort. The final status assigned may be: graduate, General Educational Development (GED) recipient, continuing, or dropout. Students with any other final statuses, or without final statuses, are removed from the cohort.

### **Continuing Student**

A continuing student is one who was enrolled in a Texas public school in the fall of the school year following expected graduation.

### **Dropout**

Dropouts are defined and counted as per *1999-2000 Public Education Information Management System Data Standards* (TEA, 1999), the *2000-2001 Public Education Information Management System Data Standards* (TEA, 2000), the *2001 Accountability Manual* (TEA, 2001d), and *Secondary School Completion and Dropouts in Texas Public Schools, 1999-00* (TEA, 2001a). A student who dropped out but later returned or received a diploma or GED certificate is counted based on his or her final status, not as a dropout.

### **Economically Disadvantaged**

The number of students eligible for free or reduced-price lunch or eligible for other public assistance as defined in the *2000-2001 Public Education Information Management System Data Standards* (TEA, 2000) is used as a proxy for the number of economically disadvantaged students. Eligibility for free or reduced price lunch or other public assistance is reported for each student at the time of enrollment.

### **Ethnicity/race**

Ethnicity/race is one of the demographic characteristics reported for each student at the time of enrollment.

### **GED recipient**

A GED recipient is a student awarded a GED certificate.

### **Graduate**

A graduate is a student awarded a high school diploma by a Texas public school.

### **Total Students**

Total students reported is a cumulative total of students served at the campus, or in the district, county, or state, during the school year.

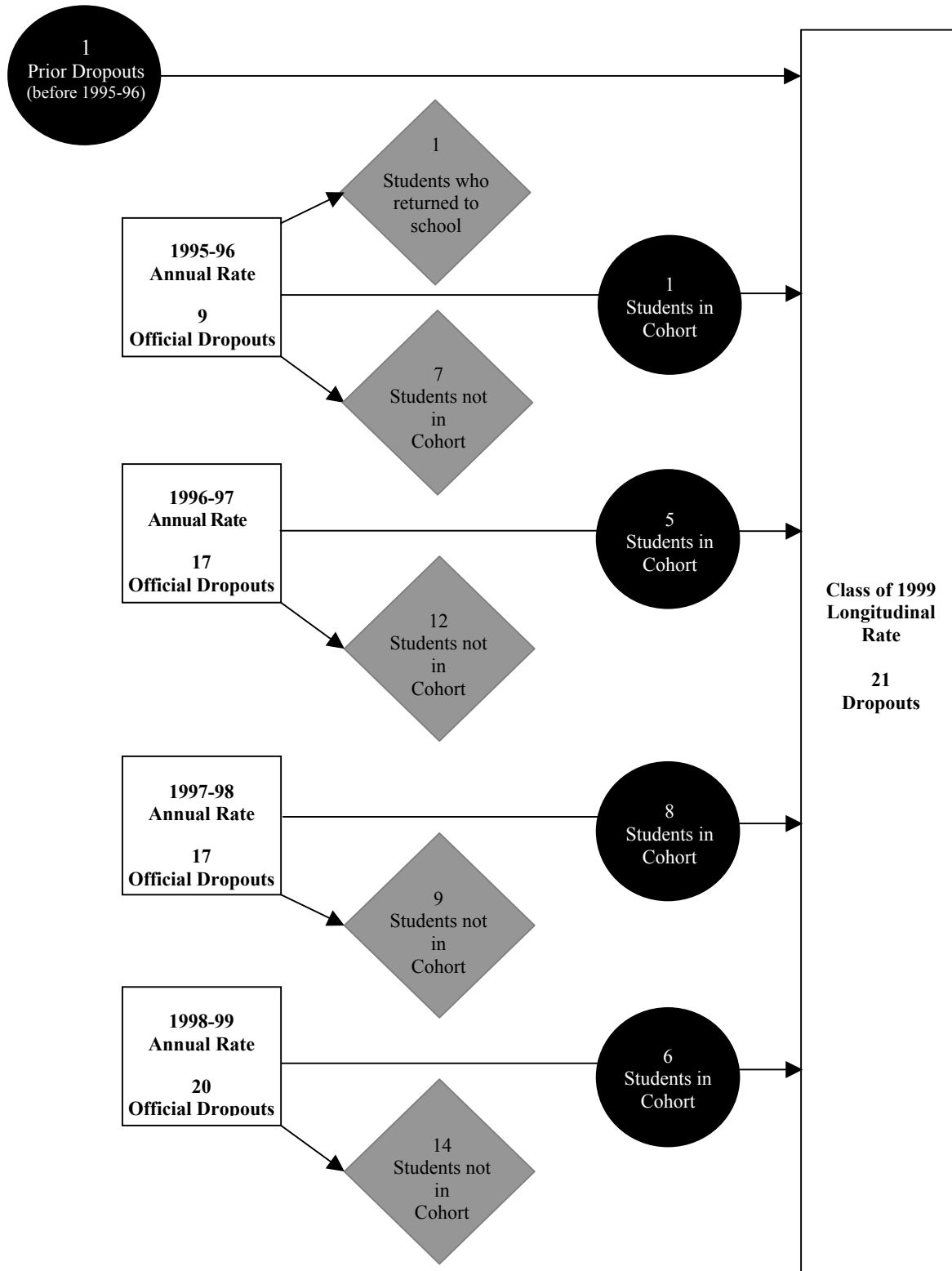


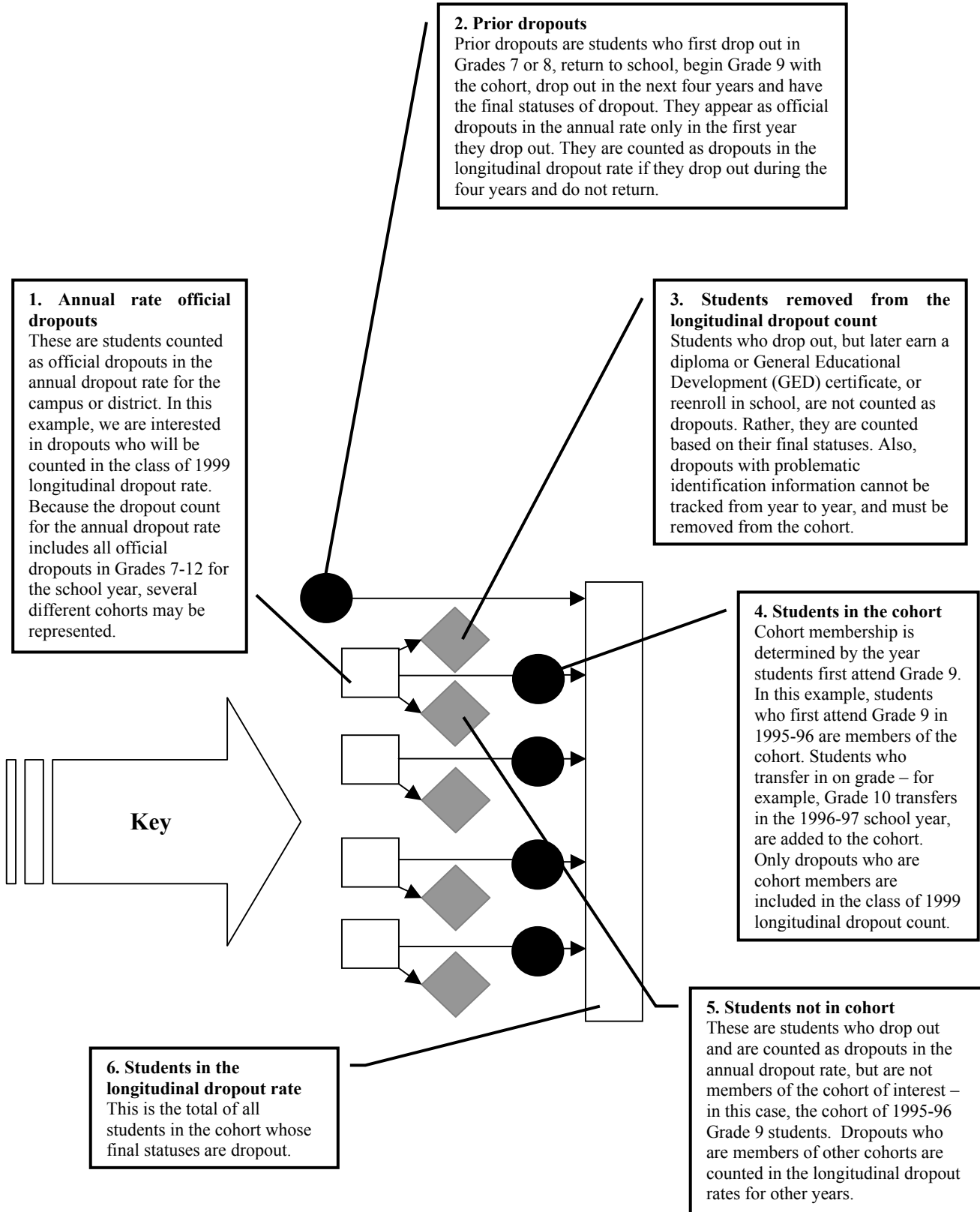


**Figure 1**

**Comparing Annual and Longitudinal Dropout Counts at the District or Campus Level**

**Figure 1. Comparing Annual and Longitudinal Dropout Counts at the District or Campus Level.** This chart demonstrates how annual counts of official dropouts are related to the number of dropouts in the longitudinal rate at the district or campus level. The numbers provided in this chart are for illustration only. See facing page for a detailed explanation of each element in the chart.







## References

- TEA. (1999). *1999-2000 Public Education Information Management System data standards*. (AD9 615 01). Austin, TX: Author.
- TEA. (2000). *2000-2001 Public Education Information Management System data standards*. (AD00 615 01). Austin, TX: Author.
- TEA. (2001a). *Secondary school completion and dropouts Texas public schools, 1999-00*. (GE01 601 09). Austin, TX: Author.
- TEA. (2001b). *Secondary school completion and dropouts in Texas public schools, 1999-00: District and campus listings*. (GE01 601 11). Austin, TX: Author.
- TEA. (2001c). *Secondary school completion and dropouts in Texas public schools, 1999-00: Supplemental district data*. (GE01 601 10). Austin, TX: Author.
- TEA. (2001d). *2001 accountability manual: The 2001 accountability ratings system for Texas public schools and school districts*. (GE01 602 03). Austin, TX: Author.



# Texas Education Agency

## Publication Order Form





Purchaser Name \_\_\_\_\_ Date \_\_\_\_\_

Send to (name, if different) \_\_\_\_\_

Address \_\_\_\_\_

City \_\_\_\_\_ State \_\_\_\_\_ Zip \_\_\_\_\_

### Publications in this Series

Publication Number and Title	Available in PDF*	Quantity	Price Per Copy	Tax Exempt Only		Cost
				Quantity	Price Per Copy	
<i>GE01 601 09</i> Secondary School Completion and Dropouts in Texas Public Schools, 1999-00 <div style="float: right; text-align: right;">  </div>	Yes	_____	\$14.50	_____	\$13.00	_____
<i>GE01 601 10</i> Secondary School Completion and Dropouts in Texas Public Schools, 1999-00: Supplemental District Data <div style="float: right; text-align: right;">  </div>	Yes	_____	\$30.00	_____	\$28.00	_____
<i>GE01 601 11</i> Secondary School Completion and Dropouts in Texas Public Schools, 1999-00: District and Campus Listings <div style="float: right; text-align: right;">  </div>	Yes	_____	\$47.50	_____	\$44.00	_____
<i>GE01 601 12</i> Secondary School Completion and Dropouts in Texas Public Schools, 1999-00: County Listings <div style="float: right; text-align: right;">  </div>	Yes	_____	\$22.50	_____	\$21.00	_____

\*Copy of report can be downloaded and printed from <http://www.tea.state.tx.us/research/>.

**Subtotal** \_\_\_\_\_  
*(from pages 2 and 3)*

**Total** \_\_\_\_\_

*Price includes postage, handling, and applicable state tax. Make check or money order payable to Texas Education Agency.*

For publication inquiries and purchase orders† send to:

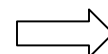
**Texas Education Agency  
Publications Distribution  
1701 North Congress Avenue  
Austin, Texas 78701-1494**

†Purchase orders are accepted only from Texas educational institutions and government agencies.

If you are mailing a check or money order, remit this form with payment to:

**Texas Education Agency  
Publications Distribution  
P.O. Box 13817  
Austin, Texas 78711-3817**

See pages 2 and 3 for publications on related topics



## Publications on Related Topics from Research and Evaluation

(Note: Quantities are limited)

Publication Number and Title	Available in PDF*	Quantity	Price Per Copy	Tax Exempt Only		Cost
				Quantity	Price Per Copy	
<b>Dropouts</b>						
GE5 601 09 1992-93 Report on Public School Dropouts	No	_____	\$1.00	_____	\$1.00	_____
GE6 601 01 1993-94 Report on Public School Dropouts	No	_____	\$2.00	_____	\$2.00	_____
GE6 601 08 1994-95 Report on Public School Dropouts	No	_____	\$6.00	_____	\$6.00	_____
GE7 601 08 1995-96 Report on Public School Dropouts	No	_____	\$9.00	_____	\$8.00	_____
GE8 601 05 1996-97 Report on Public School Dropouts	Yes	_____	\$9.50	_____	\$8.50	_____
GE9 601 03 1997-98 Report on Public School Dropouts	Yes	_____	\$10.75	_____	\$10.00	_____
GE01 600 02 Dropout Study: A Report to the 77th Texas Legislature	Yes	_____	No charge, <i>limited quantity</i>	_____	No charge, <i>limited quantity</i>	_____
GE01 601 02 Secondary School Completion and Dropouts in Texas Public Schools, 1998-99	Yes	_____	\$12.50	_____	\$11.50	_____
GE01 601 03 Secondary School Completion and Dropouts in Texas Public Schools, 1998-99: Supplemental District Data	Yes	_____	\$26.50	_____	\$24.50	_____
GE01 601 04 Secondary School Completion and Dropouts in Texas Public Schools, 1998-99: District and Campus Listings	Yes	_____	\$34.00	_____	\$31.00	_____
GE01 601 05 Secondary School Completion and Dropouts in Texas Public Schools, 1998- 99: County, District and Campus Listings	Yes	_____	\$43.50	_____	\$40.00	_____
<b>Subtotal</b>						_____

\*Copy of report can be downloaded and printed from <http://www.tea.state.tx.us/research/>.



## Publications on Related Topics from Research and Evaluation

(Note: Quantities are limited)

Publication Number and Title	Available in PDF*	Quantity	Price Per Copy	Tax Exempt Only		Cost
				Quantity	Price Per Copy	
<b>Retention</b>						
GE5 601 12 Report on Grade Level Retention of Texas Students, 1992-93 and 1993-94	No	_____	\$1.00	_____	\$1.00	_____
GE7 601 01 1994-95 Report on Grade Level Retention of Texas Students	No	_____	\$6.00	_____	\$6.00	_____
GE8 601 01 1995-96 Report on Grade Level Retention of Texas Students	No	_____	\$11.00	_____	\$10.00	_____
GE8 601 07 1996-97 Report on Grade Level Retention of Texas Students	Yes	_____	\$10.00	_____	\$9.25	_____
GE9 601 02 1997-98 Report on Grade Level Retention of Texas Students	Yes	_____	\$9.50	_____	\$8.75	_____
GE01 601 07 Grade Level Retention in Texas Public Schools, 1998-99	Yes	_____	\$17.00	_____	\$16.00	_____
<b>Subtotal</b>						_____

\*Copy of report can be downloaded and printed from <http://www.tea.state.tx.us/research/>.

## **Compliance Statement**

### **Title VI, Civil Rights Act of 1964, the Modified Court Order, Civil Action 5281, Federal District Court, Eastern District of Texas, Tyler Division.**

Reviews of local education agencies pertaining to compliance with Title VI Civil Rights Act of 1964 and with specific requirements of the Modified Court Order, Civil Action No. 5281, Federal District Court, Eastern District of Texas, Tyler Division are conducted periodically by staff representatives of the Texas Education Agency. These reviews cover at least the following policies and practices:

1. acceptance policies on student transfers from other school districts;
2. operation of school bus routes or runs on a nonsegregated basis;
3. nondiscrimination in extracurricular activities and the use of school facilities;
4. nondiscriminatory practices in the hiring, assigning, promoting, paying, demoting, reassigning, or dismissing of faculty and staff members who work with children;
5. enrollment and assignment of students without discrimination on the basis of race, color, or national origin;
6. nondiscriminatory practices relating to the use of a student's first language; and
7. evidence of published procedures for hearing complaints and grievances.

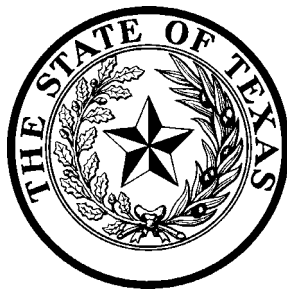
In addition to conducting reviews, the Texas Education Agency staff representatives check complaints of discrimination made by a citizen or citizens residing in a school district where it is alleged discriminatory practices have occurred or are occurring.

Where a violation of Title VI of the Civil Rights Act is found, the findings are reported to the Office for Civil Rights, U.S. Department of Education.

If there is a direct violation of the Court Order in Civil Action No. 5281 that cannot be cleared through negotiation, the sanctions required by the Court Order are applied.

### **Title VII, Civil Rights Act of 1964 as Amended by the Equal Employment Opportunity Act of 1972; Executive Orders 11246 and 11375; Equal Pay Act of 1964; Title IX, Education Amendments; Rehabilitation Act of 1973 as Amended; 1974 Amendments to the Wage-Hour Law Expanding the Age Discrimination in Employment Act of 1967; Vietnam Era Veterans Readjustment Assistance Act of 1972 as Amended; Immigration Reform and Control Act of 1986; Americans With Disabilities Act of 1990; and the Civil Rights Act of 1991.**

The Texas Education Agency shall comply fully with the nondiscrimination provisions of all federal and state laws, rules, and regulations by assuring that no person shall be excluded from consideration for recruitment, selection, appointment, training, promotion, retention, or any other personnel action, or be denied any benefits or participation in any educational programs or activities which it operates on the grounds of race, religion, color, national origin, sex, disability, age, or veteran status (except where age, sex, or disability constitutes a bona fide occupational qualification necessary to proper and efficient administration). The Texas Education Agency is an Equal Opportunity/Affirmative Action employer.



**Texas Education Agency  
1701 North Congress Avenue  
Austin, Texas 78701-1494**

**Document No. GE01 601 12  
August 2001**