A photograph of a school hallway with a wide staircase. Several students with backpacks are walking on the stairs. Large windows in the background show trees and a building. A blue semi-transparent banner is overlaid on the center of the image, containing the text.

G/T Tuesday

Special Populations – Gifted/Talented Education

June 1, 2021

We equip school systems to increase awareness, promote equitable access, and improve outcomes for all special populations.

English
Learner
Support

Highly
Mobile &
At-Risk

Gifted &
Talented

- G/T Information
- Year Close Out
- District Share Outs and Happenings
- Question/Answer

6/1/2021

School Reported COVID-19 Cases in Texas Public Schools

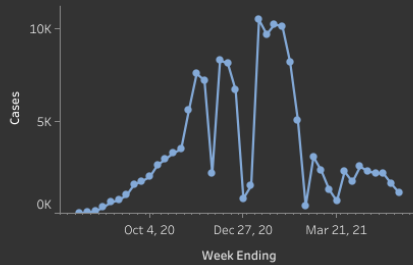
Cumulative positive student cases

145,421

Cumulative positive staff cases

72,605

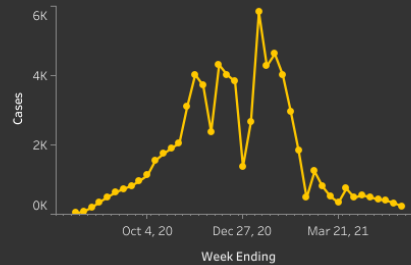
New Weekly COVID-19 positive student cases



3,007,214

Estimated students on campus as of
January 29, 2021

New Weekly COVID-19 positive staff cases



800,078

2019-2020 Staff Count

On-campus case counts were only reported for weeks in which students were receiving on-campus instruction and activities. Follow this link to see the distribution of start dates across Texas public school systems.
<https://tea.texas.gov/sites/default/files/covid/SY-20-21-Texas-Public-School-Start-Dates.pdf>

5/18/2021

School Reported COVID-19 Cases in Texas Public Schools

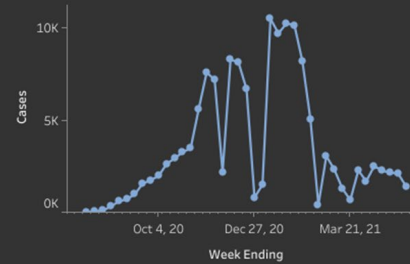
Cumulative positive student cases

143,979

Cumulative positive staff cases

72,282

New Weekly COVID-19 positive student cases



3,007,214

Estimated students on campus as of
January 29, 2021

New Weekly COVID-19 positive staff cases



800,078

2019-2020 Staff Count

On-campus case counts were only reported for weeks in which students were receiving on-campus instruction and activities. Follow this link to see the distribution of start dates across Texas public school systems.
<https://tea.texas.gov/sites/default/files/covid/SY-20-21-Texas-Public-School-Start-Dates.pdf>

<https://dshs.texas.gov/coronavirus/schools/texas-education-agency/>

Wellness Check

Main Page

- <https://tea.texas.gov/texas-schools/health-safety-discipline/coronavirus-covid-19-support-and-guidance>

Instructional Continuity Planning

- <https://tea.texas.gov/texas-schools/health-safety-discipline/instructional-continuity-planning>

SPED and Special Populations

- <https://tea.texas.gov/texas-schools/health-safety-discipline/special-education-and-special-populations>

- In 2021, participants must register in advance for the meetings. The links below are the Spring registration links for the G/T Tuesdays.

Morning Edition @ 9:00 am

- TODAY!!!

Afternoon Edition @ 1:00 pm on 6/22/2021

- <https://us02web.zoom.us/meeting/register/tZckdeGppjwqHt0U1UHwtq3kcjkzVzwXd7tM>

- After registering, you will receive a confirmation email containing information about joining the meeting.

TEA SY 20-21 Gifted/Talented Education Guidance **STRONG START**
 August 24, 2020

(512) 463-9000 | disasterinfo@tea.texas.gov | tea.texas.gov/coronavirus

Gifted/Talented FAQ: Section Topics

Click on the links below to go directly to that section of the FAQ.

- Program Services
- Identification
- Curriculum and Instruction
- Professional Learning
- Family and Community Involvement

Note: This guidance only applies to the 2020-2021 school year and may include updates to guidance provided in response to the COVID-19 pandemic and resulting school closures during the 2019-2020 school year.

Program Services

- What are LEAs responsible for regarding G/T services during school reopening and potential closures?

LEAs should continue providing program services for G/T students. (TEC §29.122(a); 19 TAC §89.3, State Plan (2.16, 3.1, 3.6 & 4.1- Texas G/T State Plan 2019)).
- Who is responsible for G/T coordination?

LEA G/T services are coordinated by appropriately trained G/T education administrators, coordinators, and specialists (G/T Staff).
- Per House Bill 3, Sec 29.124, each school district shall annually certify to the commissioner that the district has established a program for gifted and talented students, that the program is consistent with the Texas State Plan for the Education of Gifted/Talented Students, and the use of funds on the district's program for G/T students. How will this be implemented during the 2020-2021 school year?
 - LEAs will continue to follow the certification process implemented in 2019-2020.
 - Identify and serve G/T students
 - Identify LEA G/T program service options
 - Report the use of G/T funds
 - Submit the plan for G/T services in all learning platforms
 - The agency will roll out the next phase of the certification process as a pilot with LEA trainings for full implementation in 2021-2022.

If you have further questions, please submit them to disasterinfo@tea.Texas.gov and monica.brewer@tea.Texas.gov

TEA Gifted/Talented Education **STRONG START**
 October 15, 2020

(512) 463-9000 | disasterinfo@tea.texas.gov | tea.texas.gov/coronavirus

This guidance only applies to the 2020-2021 school year provided in response to the COVID-19 pandemic.

Local Educational Agencies (LEAs) must provide Gifted and Talented (G/T) services for students in all learning settings. The G/T assessment waiver for new identification ended in May 2020. LEAs are expected to resume the 2019-2020 identification and start the 2020-2021 identification for G/T process.

State Goal for Services for G/T Students
 Students who participate in services designed for G/T students will demonstrate skills in self-directed learning, thinking, research, and communication as evidenced by the development of innovative products and performances that reflect individuality and creativity and are advanced in relation to students of similar age, experience, or environment. High school graduates who have participated in services for G/T students will have produced products and performances of professional quality as part of their program services.

Table of Contents

- Gifted/Talented Education.....1
- Fidelity of Services3
- Student Assessment for G/T Services4
- Continuation of 2019-2020 Assessment4
- Assessment Considerations4
- Community Information7
- Student Placement8
- Service Options9
- Acceleration10
- Remote Instruction10
- Considerations from the field11
- Curriculum & Instruction19
- Differentiated Instruction19
- Cluster and Flexible Grouping20
- Texas Performance Standards Project20
- Adapting or Modifying the Curriculum21
- Twice Exceptional21

<https://tea.texas.gov/sites/default/files/covid/SY-20-21-GT-Guidance.pdf>

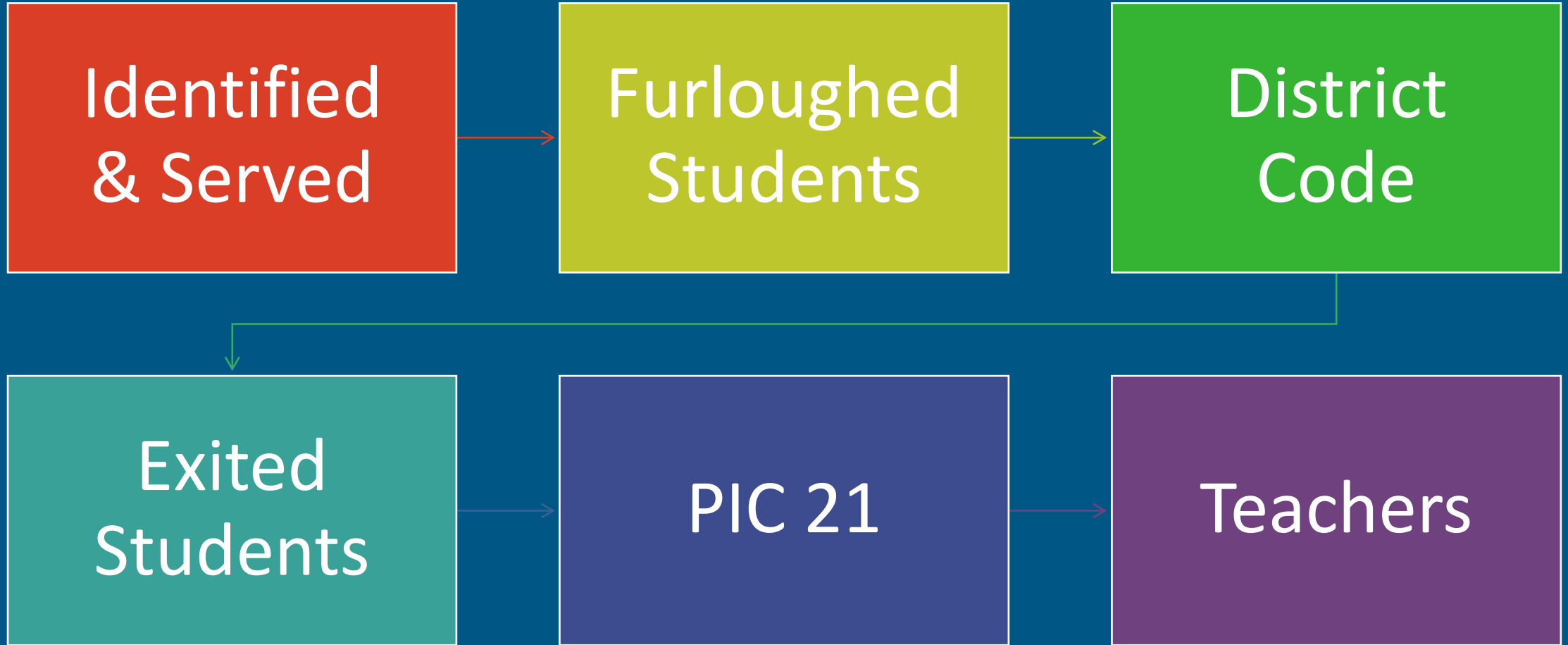


<https://public.govdelivery.com/accounts/TXTEA/subscriber/new>

The State definition: “...gifted and talented students” means: a child or youth who performs at or shows the potential for performing at a remarkably high level of accomplishment when compared to others of the same age, experience, or environment and who:

- Exhibits high performance capability in an intellectual, creative, or artistic area,
- Possess an unusual capacity for leadership, or
- Excels in a specific academic field.

Students who participate in services designed for gifted/talented students will demonstrate skills in self-directed learning, thinking, research and communication as evidenced by the development of innovative products and performances that reflect individuality and creativity and are advanced in relation to students of similar age, experience, or environment. High school graduates who have participated in services for gifted/talented students will have produced products and performances of professional quality as part of their program services.



- **Program Intent Code 21**
 - Tracking G/T funds
 - Reporting the use of G/T funds
 - Submission process same as prior years

- **Local policy determines expenditures, as state spending requirements have been removed.**



Section 3-3: Gifted/Talented Program Records Retention Policy

Record Number	Record Title	Record Description	Retention Period
SD3250-16	STUDENT RECORDS	Records of each student referred to or receiving services in a gifted/talented program, including nomination and observation documentation, testing results, parental consents, committee reports and recommendations, and other records of services required under state regulation or pertinent to the identification of students for participation in gifted/talented programs.	Cessation of services + 5 years.



What if?

My question is...

Have you thought
about?

Could we?



Returning
Educators



Transferred
Educators

Retiring or
Changing
Roles

ESC Contacts & Websites

Region I: Edinburg	Patty Rendon	https://www.esc1.net/Domain/57	prendon@esc1.net
Region II: Corpus Christi	Kimberly Jones	http://gt.esc2.net/	Kimberly.jones@esc2.us
	Robyn Hernandez		Robyn.hernandez@esc2.us
Region III: Victoria	Mary Lea Pfenninger	https://www.esc3.net/domain/76	mpfenninger@esc3.net
Region IV: Houston	Kathi Langford	https://www.esc4.net/gifted	Kathi.langford@esc4.net
Region V: Beaumont	Johnny Vines	https://www.esc5.net/page/CIA_AASGT	jvines@esc5.net
Region VI: Huntsville	Melissa Saphos	https://www.esc6.net/472279_3	msaphos@esc6.net
Region VII: Kilgore	Donna Ashby	https://www.esc7.net/page/CIA.GT.home	dashby@esc7.net
	Carla Cheshire		ccheshire@esc7.net
Region VIII: Mt. Pleasant	Steven Hammons	https://www.reg8.net/instructional-services	shammons@reg8.net
	Susan Huizinga		shuizinga@reg8.net
Region IX: Wichita Falls	Lisa Taylor	https://www.esc9.net/229618_3	lisa.taylor@esc9.net
Region X: Richardson	Arynn Rasmussen	https://www.region10.org/programs/gifted-talented/overview/	arynn.rasmussen@region10.org
	Jennifer Gunn		jennifer.gunn@region10.org
	Jessica Gitzinger		jessica.gitzinger@region10.org
Region XI: Fort Worth	Clint Rodriguez	https://www.esc11.net/domain/485	crodriguez@esc11.net
	Andi McNair		amcnair@esc12.net
Region XII: Waco	Kari Espin	https://www.esc12.net/page/ge_gt	kespın@esc12.net
	Jessica Torres		jtorres@esc12.net
	Josh Essary		jessary@esc12.net
Region XIII: Austin	Amber Reinecke	https://www4.esc13.net/craa/gt/	amber.reinecke@esc13.txed.net
	Kim Galloway		Kimberly.galloway@esc13txed.net
Region XIV: Abilene	Nancy Galle	https://sites.google.com/view/region14gt/home	ngalle@esc14.net
Region XV: San Angelo	Torrey Clay	https://www.esc15.net/Domain/32	Torrey.clay@esc15.net
Region XVI: Amarillo	Abbee Jefferies	https://www.esc16.net/page/curr.Gifted_and_Talented	Abbee.jefferies@esc16.net
Region XVII: Lubbock	Greg Reeves	https://www.esc17.net/page/Gifted%20and%20Talented	greeves@esc17.net
	Sabrina Blankenship		sblankenship@esc17.net
Region XVIII: Midland	Cheree Smith	https://www.esc18.net/apps/pages/gifted-talented	csmith@esc18.net
Region XIX: El Paso	Amy Avina	https://www.esc19.net/domain/270#calendar4927/20200327/month	aavina@esc19.net
	Melissa Darbonnier		medarbonnier@esc19.net
Region XX: San Antonio	Rolando Ruvalcaba	https://www.esc20.net/apps/pages/advanced-academics	roloando.ruvlcaba@esc20.net
	Justin Boyd		Justin.boyd@esc20.net



Implement work streams to support students and teachers



Provide social and emotional supports for counselors, teachers, parents and students



Determine how you will monitor student growth and academic success



Continuously update parents and staff on the various resources and options



■ Meeting

- How are you meeting?
 - Virtual
 - Face to Face

■ Protocols

- Meeting Norms
- Sharing of Information

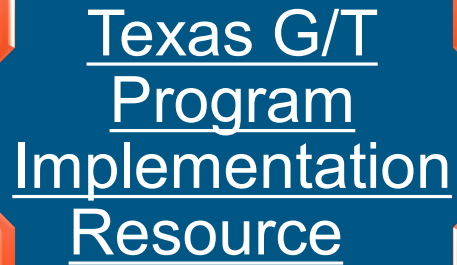
■ Confidentiality

- Security of the data
- Blind Voting (Advocacy)





TEXAS G/T PROGRAM
IMPLEMENTATION RESOURCE



Texas G/T
Program
Implementation
Resource



The Texas
Performance
Standards
Project



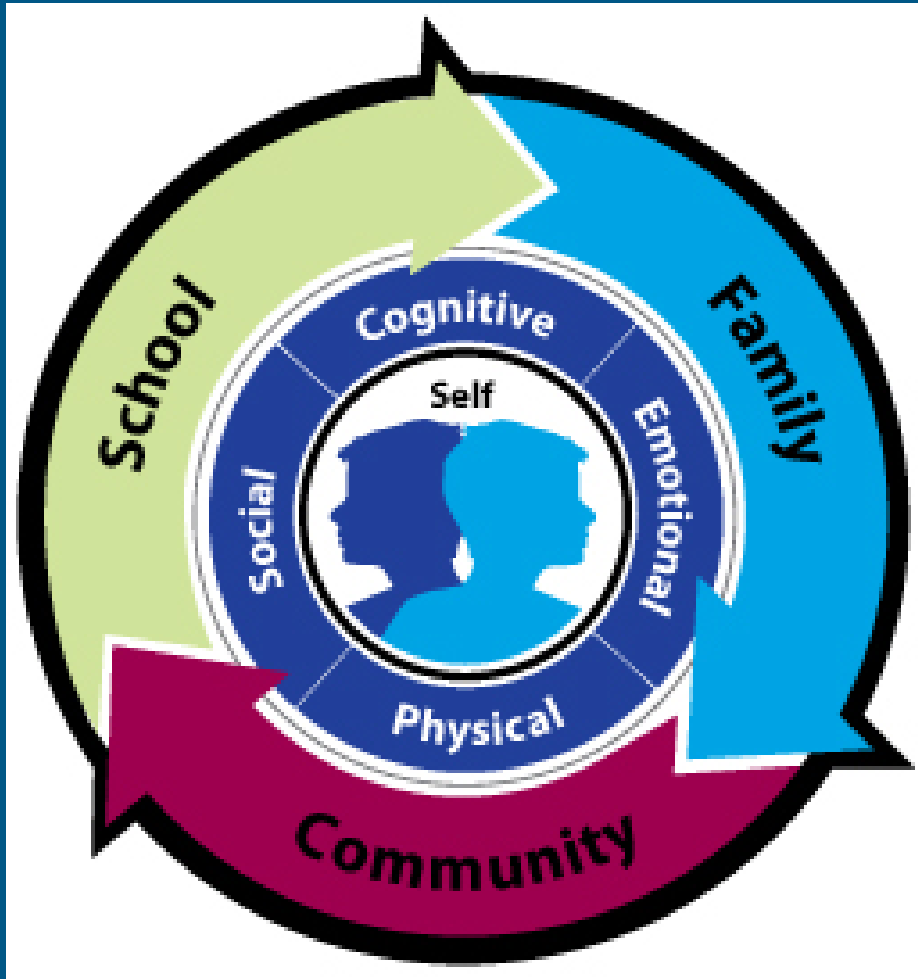
Equity in G/T
Education



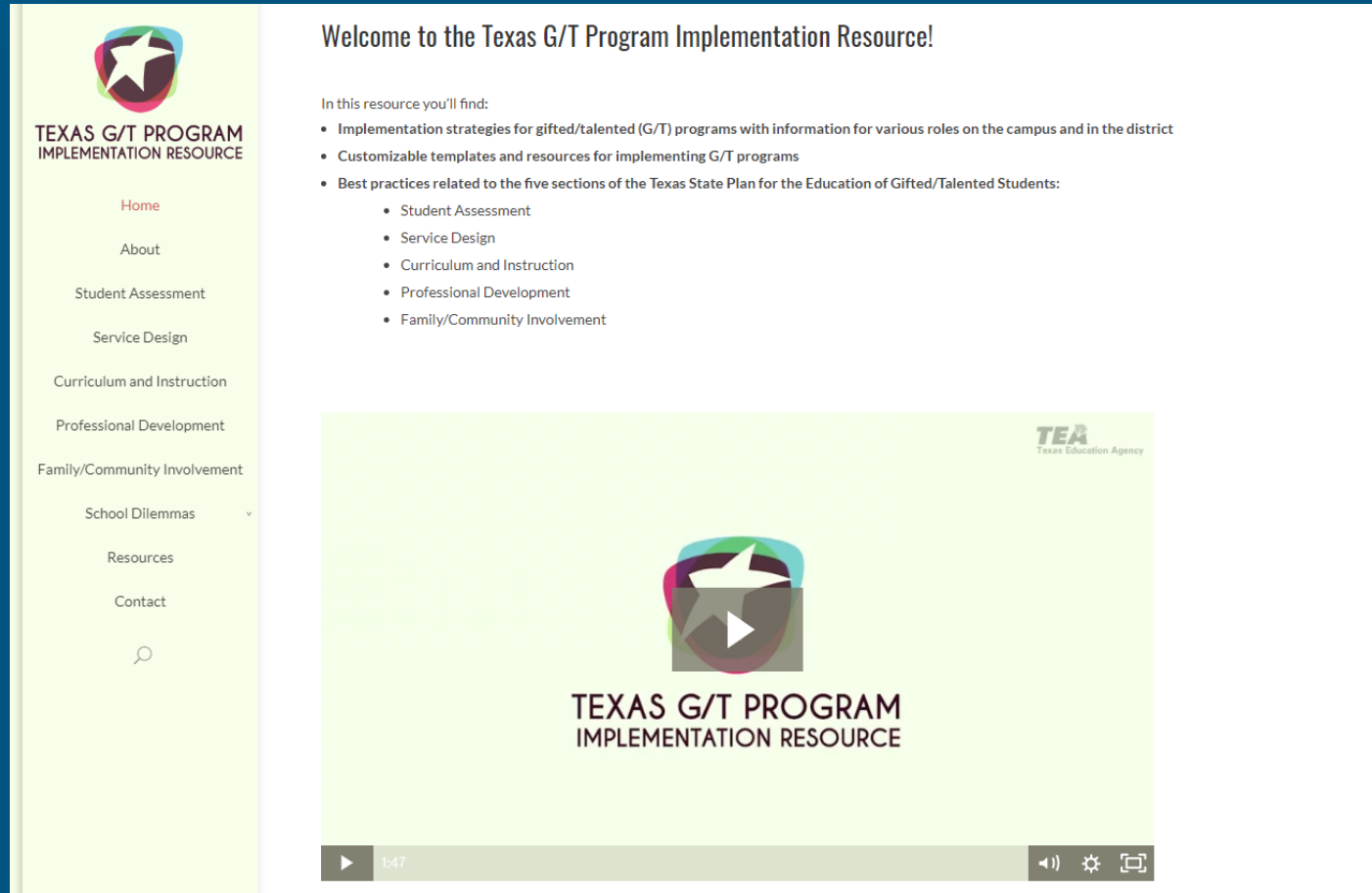
Gifted/Talented
Teacher Toolkit I



Gifted/Talented
Teacher Toolkit II



- www.gtequity.org
- Socioeconomic Representation
- Bilingual G/T Education
- Twice-Exceptional Children and G/T Services



The screenshot shows the homepage of the Texas G/T Program Implementation Resource. On the left is a light green sidebar with a navigation menu. The main content area has a white background with a welcome message and a list of resources. At the bottom of the main content is a video player showing a title card for the resource.

TEXAS G/T PROGRAM IMPLEMENTATION RESOURCE

- Home
- About
- Student Assessment
- Service Design
- Curriculum and Instruction
- Professional Development
- Family/Community Involvement
- School Dilemmas
- Resources
- Contact

Welcome to the Texas G/T Program Implementation Resource!

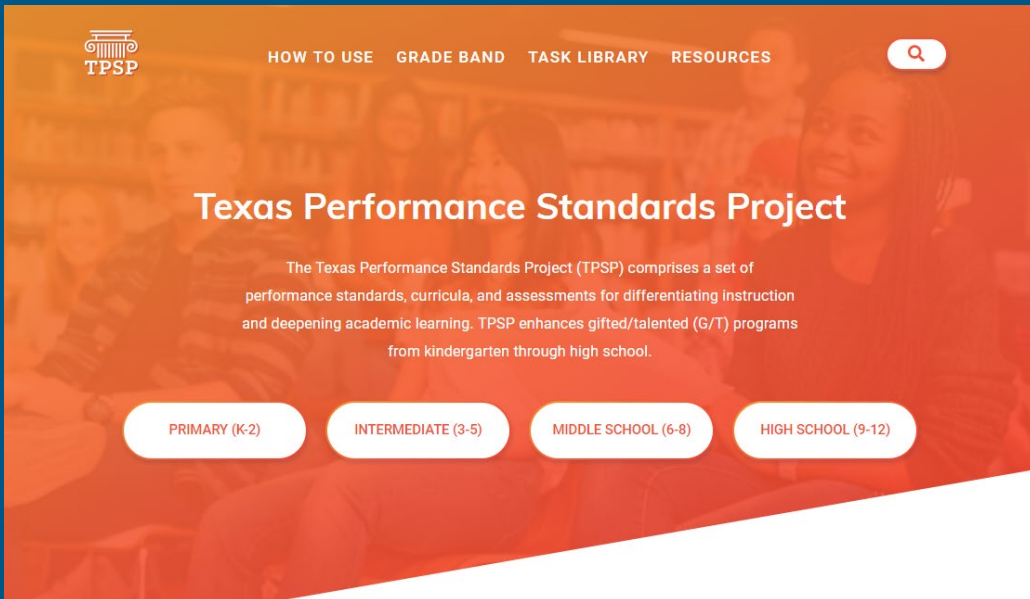
In this resource you'll find:

- Implementation strategies for gifted/talented (G/T) programs with information for various roles on the campus and in the district
- Customizable templates and resources for implementing G/T programs
- Best practices related to the five sections of the Texas State Plan for the Education of Gifted/Talented Students:
 - Student Assessment
 - Service Design
 - Curriculum and Instruction
 - Professional Development
 - Family/Community Involvement

TEXAS G/T PROGRAM IMPLEMENTATION RESOURCE

1:47

<http://www.texasgtresource.org/>



www.texaspsp.org

- Tasks at all grade levels (with Spanish translations for select tasks K-12)
- Scoring rubrics (E/S)
- Examples of student work
- Guides to Success
- Administrator Walk-Throughs
- Continuum of Learning Experiences Framework Charts (COLEFs)
- Optional forms and teacher resources
- Promotional materials
- Evaluation reports



For More information please
out to Dr. Joyce Miller at
joyce.miller@tamuc.edu

Renzulli Learning System & Diversity, Equity, and Inclusion Online Summer Institute

Professional Development
for PK-12 Teachers
June 7-July 2, 2021



Funded by Kathrine K. White and
Faculty Research & Creativity
grants at Emporia State University



Orientation Meeting
Saturday, May 29
12:00 PM-12:30 PM

[CLICK HERE TO REGISTER](#)

Option A

Live/On Demand Interactive Lectures
(open to all)

Option B

Guided Teacher/Student Interventions
(upon approval)

Option C

Graduate Credit (upon request)

The registration link:

<https://forms.gle/V59PfXb5NAQ3DDwU8>

Title III Virtual Symposium

Driving English Learner Achievement: Using a Roadmap as our Guide

Thursday, July 22 – Friday, July 23



NEW!

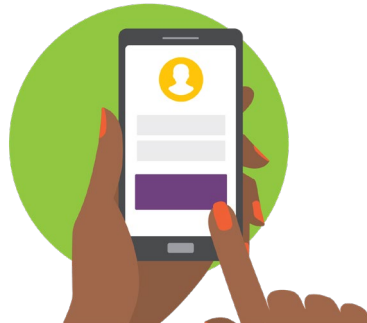
Family Topics

- Understanding Bilingual Education programming
- High Quality Instructional Materials
- The social and emotional wellness of your child
- How to authentically engage with your child's school

New Symposium Site



Conference Details



Get Registered



Call for Proposals



Keynote Speaker

Elementary Teacher Survey Information:

- Are you an elementary teacher (K-6)? If so, the National Center for Research on Gifted Education is looking for educators like you to complete a survey on teachers' perceptions about acceleration. The survey should take about 10 minutes to complete. The survey is anonymous and will help us better understand what factors related to acceleration are important to teachers.
- For more information visit <https://ncrge.uconn.edu/teacher-survey/>

Title III Virtual Symposium Call for Proposals



Sessions aligned to our New 2021 Focus Topics



Important Dates

- Presentation Proposal Submission Deadline: **Tuesday, June 1st**
- All presenters will be notified of the status of their proposal by **Friday, June 18th**
- Final copies of all presentation materials must be submitted by **Friday, July 9th**

For additional information visit txel.org/Proposals

Reminder: Carnegie Learning is the THL 6-12 Math Product



**TEXAS MATH
SOLUTION**

Published Materials

discover.carnegielearning.com/THL3.html

CL TEXAS MATH SOLUTION

Carnegie Learning Texas Math Solution

Quality Math Instruction for 6-12 Texas Educators

The Texas Education Agency (TEA) has partnered with Carnegie Learning to provide educators and students with free access to its highly rated middle school and high school content to support continuous learning efforts in the 2020-21 school year and beyond. Educators who choose to participate will receive access to TEKS-aligned curriculum materials and adaptive math learning software, MATHia®, all customized for Texans to access high quality content that works seamlessly between remote and in-classroom environments.

Click **Explore the Materials** to access the Texas Math Solution published materials for each course.

Click **Get Started Today** to learn more or schedule an implementation meeting.

Is your school implementing? Click **Join a Workshop** to sign up for a live implementation workshop.

[▶ Explore the Materials](#) [▶ Get Started Today](#) [▶ Join a Workshop](#)





Contact Information

Monica Brewer, M.S.E.

Monica.brewer@tea.texas.gov

GTED@tea.texas.gov

512-475-0626